



**MCWANE**  
PLANT & INDUSTRIAL



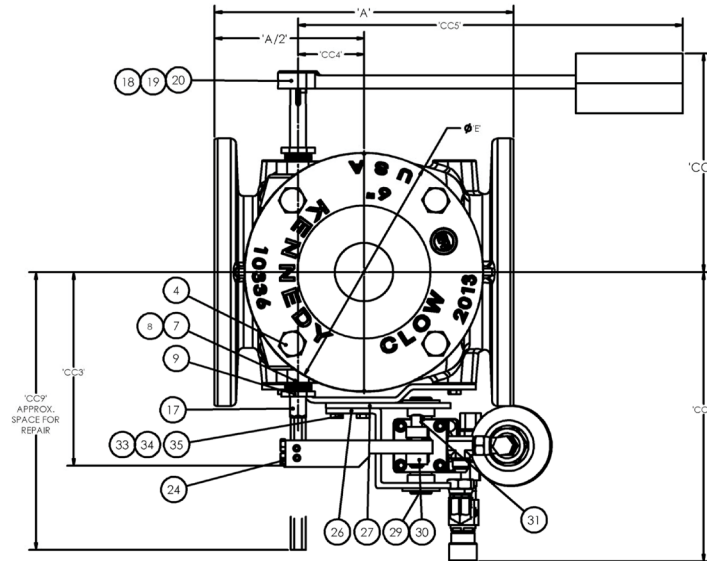
KENNEDY VALVE

# SWING CHECK VALVE WITH LEVER AND WEIGHT WITH OIL CUSHION SIZES 2" - 12"

DRAWING NO. - 81746 REV - 05

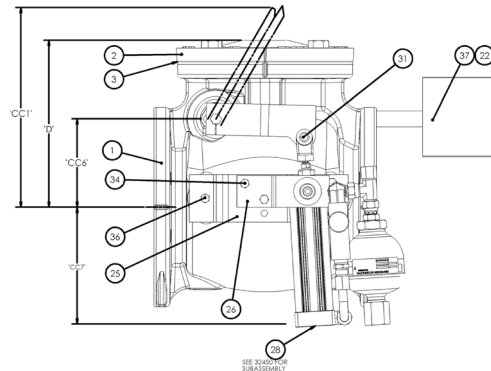
DRAWN BY - JEB

No.	DATE	ECN	REVISION
1	12/16	---	Released for production.
2	06/17	---	Updated oil cylinder to fixed piping
3	08/17	---	Updated model, modified details.
4	04/18	3098	Added seal gland nut, replaced stuffing box, packing, and gland.
5	07/20	2811	Added stuffing box, stuffing ring, gland nut, washers.



DIMENSIONS												
SIZE	A	D	E	CC1	CC2	CC3	CC4	CC5	CC6	CC7	CC8	CC9
3	9.5	7.5	6.6	14	13	6.3	2.0	11.5	3.32	9	8.0	17.5
4	11.5	9	9.1	14	13	8.0	2.4	12	3.75	9	8.5	22
6	14.0	10	11.2	20	14	9.6	3.1	18	5	8	9.7	25.5
8	19.5	13	13.6	23	15	10.3	4.9	18	6.25	7	11.7	29
10	24.5	14	16.8	24	19	12.5	6.2	18	7.12	12	13.3	33
12	27.5	16.5	19.1	25	20	13.7	8.4	18	8.19	11	15.5	37

Dimensions are approximate- for Checking Clearances only.  
Allow clearance two sides to remove side plug and access hinge pin.



## PARTS LIST

PART No.	PART	MATERIAL & ASTM DESIGNATION
1	Body	Gray Iron ASTM A126-B
2	Cap	Gray Iron ASTM A126-B
3	O-Ring, Cap Flange	Rubber; Buna-N
4	Bolt; Cap	18-8 Stainless Steel F593, F594
5	Seat Ring	Bronze C89833 or C87850
6	O-Ring; Seat Ring	Rubber; Buna-N
7	Stuffing Box	C69300 Bronze; 12" 304SS
8	Packing	Non-Asbestos
9	Gland Follower	C69300
10	Hinge (Double Key)	Ductile Iron ASTM A536
11R	Disc Holder	3" Bronze; 4"-12" Gray Iron ASTM A126-B
12R	Disc	Rubber; Nitrile
13R	Disc Plate	3" 18-8 Stainless; 4"-12" Bronze C89833 or C87850
14	Disc Bolt	3" Bronze; 4"-12" Gray Iron ASTM A126-B
15	Disc Bolt Nut	18-8 Stainless Steel F593, F594
16	O-Ring; Disc Bolt	Rubber; Buna-N
17	Hinge Pin; Special	ASTM A579 Grade 73; Tin / Electroless Nickel Plated
18	Lever	Steel
19	Key; Lever	Stainless Steel
20	Set Screw; Lever	Steel Plated
21	Key; Hinge	Stainless Steel; 12" Cold Worked
22	Set Screw; Weight	Steel Plated
23	Cylinder Arm	Steel; 12" 1045 Steel
24	Hex Head Cap Screw; Cylinder	Steel
25	Bracket; Body Cylinder	Steel
26	Bracket, Outer	Steel
27	Bracket, Inner	Steel
28	Hydraulic Cylinder Assembly	see drawing 32450
29	Bushing; Bracket	Steel
30	Clevis Rod End	Steel
31	Coupling Pins; Clevis	Pivot Point Pin
32	Set Screw; Cylinder Arm	Steel Plated
33	Lockwasher; Bracket	Steel Plated
34	Screw; Cylinder Bracket	Steel Plated
35	Nut; Cylinder Bracket	Steel Plated
36	Screw	Steel Plated
37	Weight	Cast Iron
38	Special Washers (Not Shown)	Stainless Steel