

1. FLOW MAY BE IN EITHER DIRECTION
2. VALVE SHAFT WILL MEET OR EXCEED AWWA C504 REQUIREMENTS
3. REFERENCE AWWA C504 FOR FLANGES AND DRILLING (ANSI 125)
4. 29 TURNS TO CLOSE
5. 8 BOLTS ON EACH FLANGE
6. 5/8"- DIAMETER OF BOLTS
7. OPERATED BY 2" AWWA OPERATING NUT/WRENCH NUT
8. RATED AND TESTED FOR 150psi WORKING PRESSURE

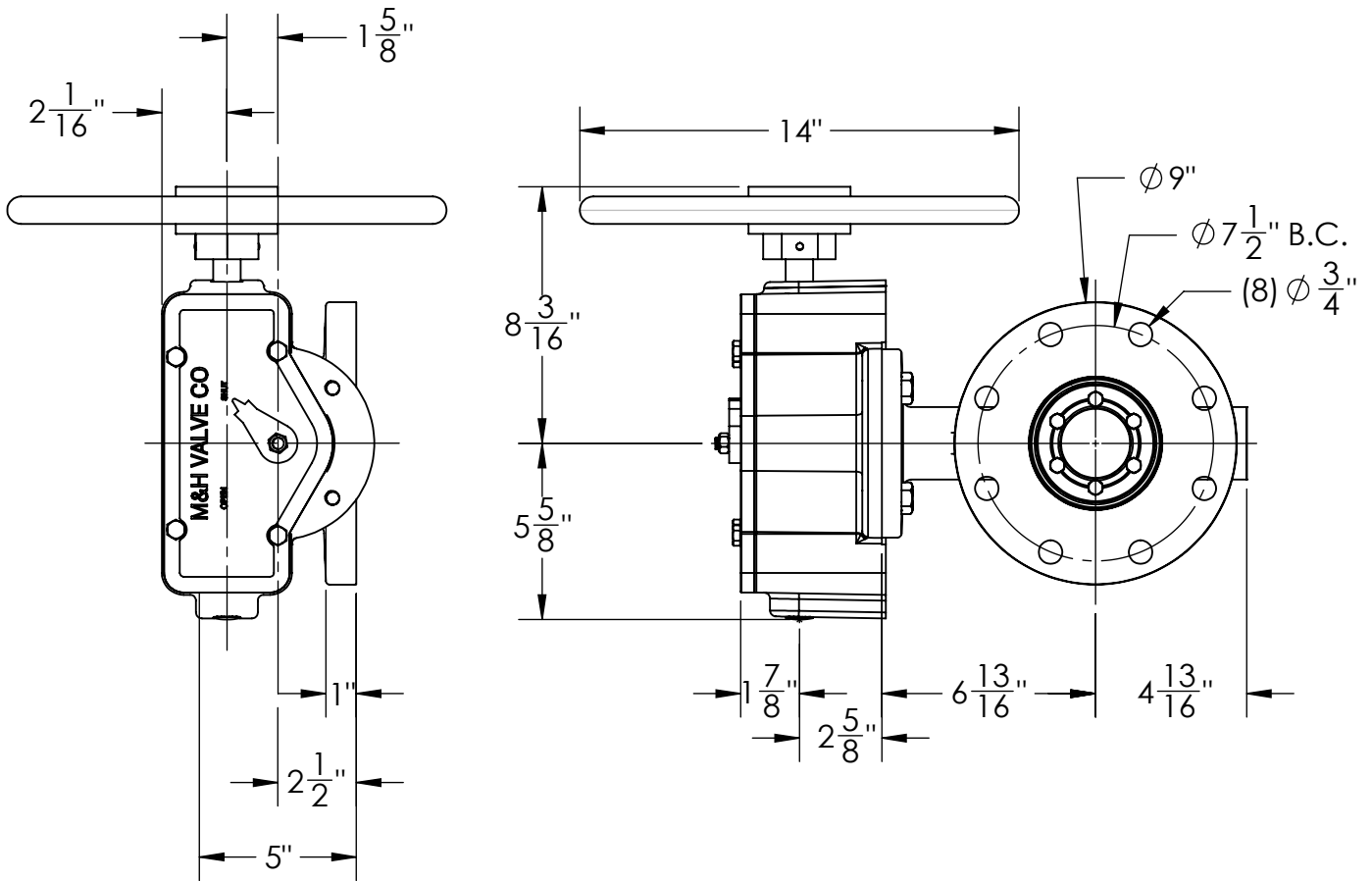
THIS DWG. AND ALL INFORMATION IS OUR PROPERTY AND SHALL NOT BE USED, COPIED, OR REPRODUCED WITHOUT WRITTEN CONSENT. DESIGN AND INVENTION RIGHTS RESERVED.



**KENNEDY VALVE**  
Division of McWane, Inc.  
1021 EAST WATER STREET ELMIRA, NEW YORK 14901

**DRAWN:** CTJ  
**DATE:** 11/26/2018  
**DWG. NO.:** B04FAM11

**4" - Style 4500 - CL150**  
**BFV with F/A 12 MSS/ISO Connection-**  
**FLANGED ENDS - Buried Operator**



1. FLOW MAY BE IN EITHER DIRECTION
2. VALVE SHAFT WILL MEET OR EXCEED AWWA C504 REQUIREMENTS
3. REFERENCE AWWA C504 FOR FLANGES AND DRILLING (ANSI 125)
4. 29 TURNS TO CLOSE
5. 8 BOLTS ON EACH FLANGE
6. 5/8"- DIAMETER OF BOLTS
7. OPERATED BY 2" AWWA OPERATING NUT/WRENCH NUT
8. RATED AND TESTED FOR 150psi WORKING PRESSURE

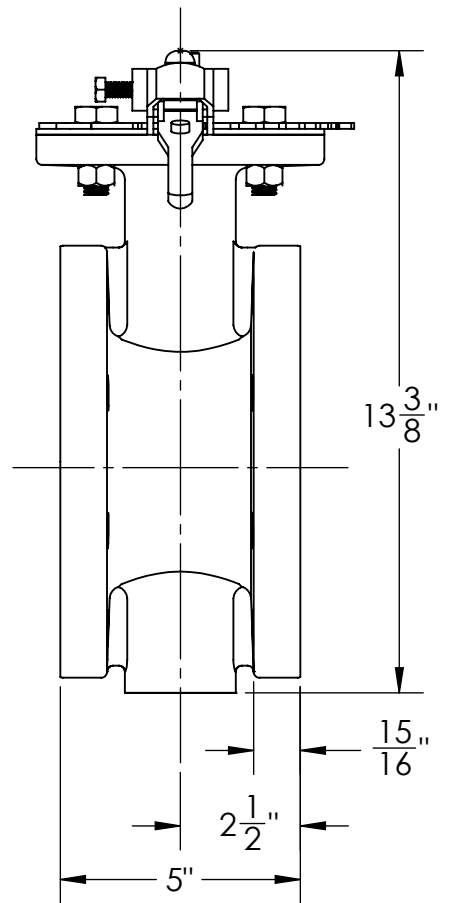
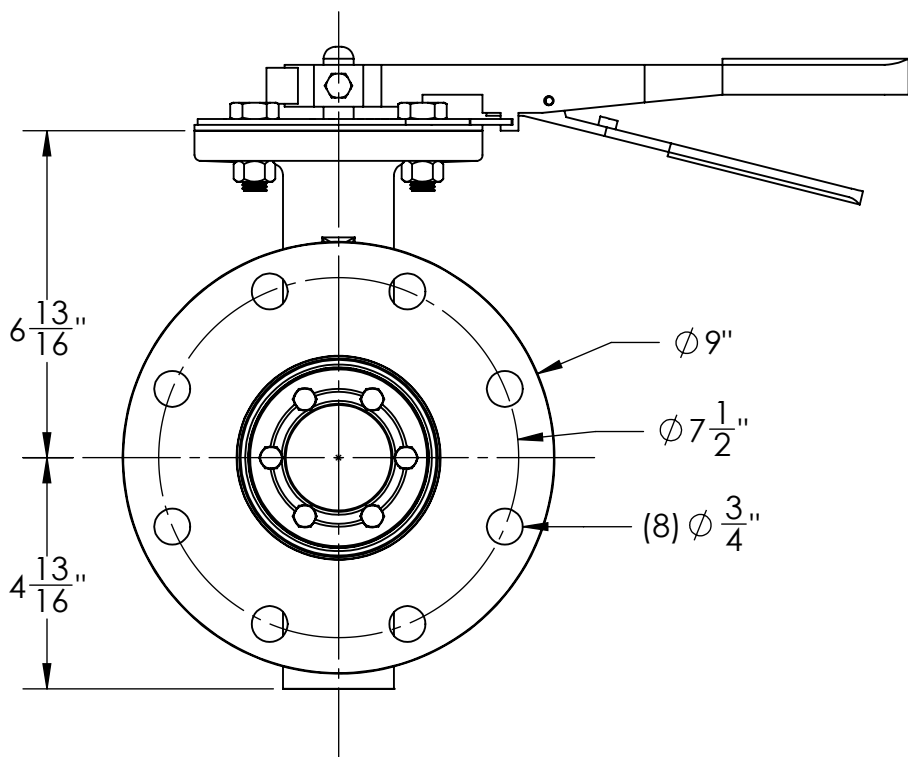
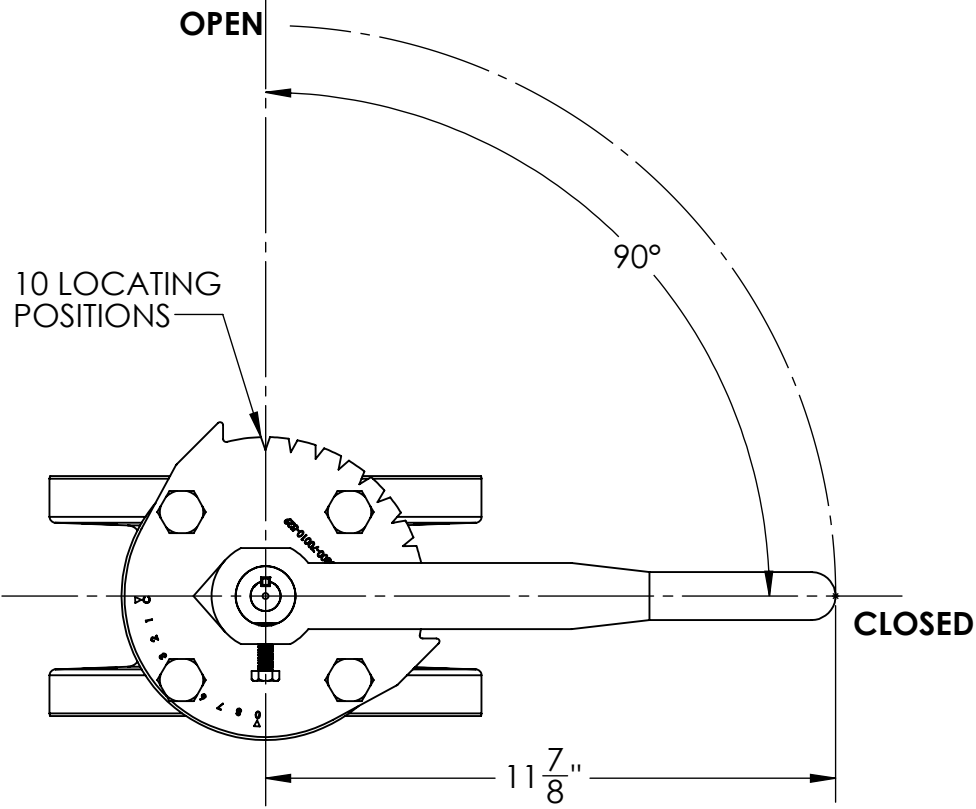
THIS DWG. AND ALL INFORMATION IS OUR PROPERTY AND SHALL NOT BE USED, COPIED, OR REPRODUCED WITHOUT WRITTEN CONSENT. DESIGN AND INVENTION RIGHTS RESERVED.



**KENNEDY VALVE**  
Division of McWane, Inc.  
1021 EAST WATER STREET ELMIRA, NEW YORK 14901

**DRAWN:** ZF  
**DATE:** 12/7/2018  
**DWG. NO.** B04FAM1101

**4" - Style 4500 - CL150 BFV**  
**W/ F/A 12 MSS/ISO Connection-**  
**HANDWHEEL OPERATOR - FLANGED ENDS**



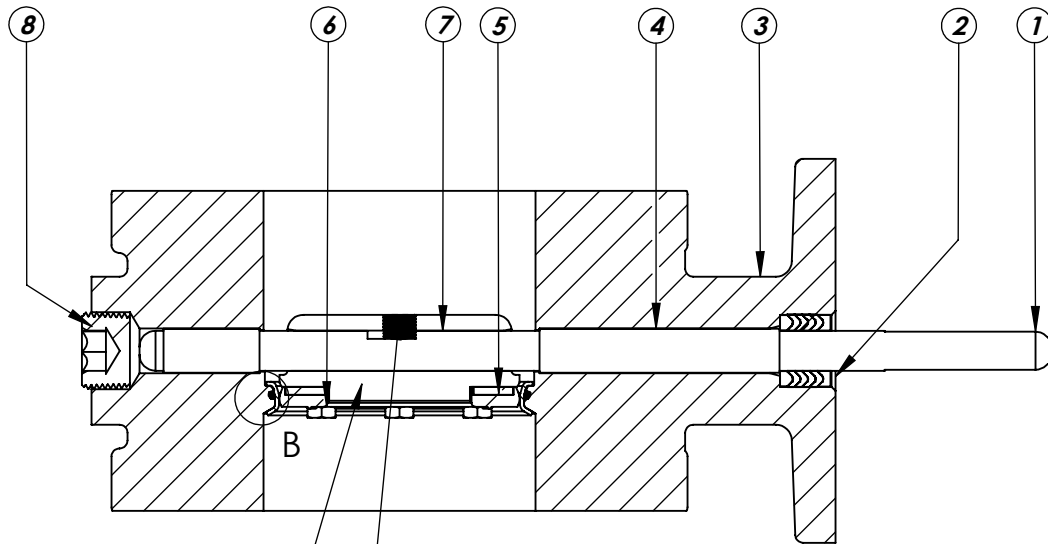
THIS DWG. AND ALL INFORMATION IS OUR PROPERTY AND SHALL NOT BE USED, COPIED, OR REPRODUCED WITHOUT WRITTEN CONSENT. DESIGN AND INVENTION RIGHTS RESERVED.



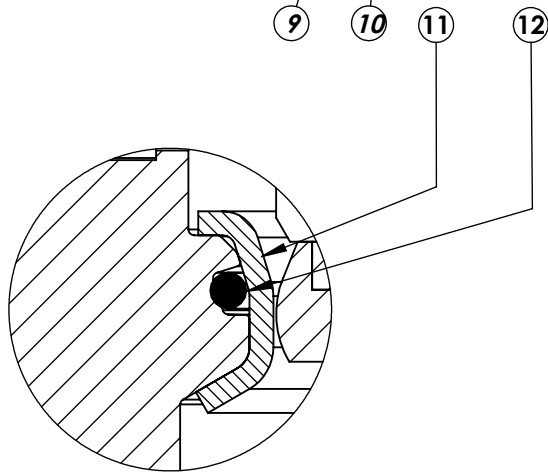
**KENNEDY VALVE**  
 Division of McWane, Inc.  
 1021 EAST WATER STREET ELMIRA, NEW YORK 14901

**DRAWN:** ZF  
**DATE:** 11/30/2018  
**DWG. NO.** B04FAL1100

4" ISO BFV FLANGED END  
 W/ FA12 MOUNTING  
 LEVER OPERATOR



SECTION A-A  
SCALE 1 : 3



DETAIL B  
SCALE 2 : 1

ITEM NO.	DESCRIPTION	MATERIAL
1	VANE SHAFT	304 STAINLESS STEEL, ASTM A-276
2	V-RING PACKING SET	EPDM, BUNA-N
3	BFV BODY	DUCTILE IRON ASTM A-536
4	UPPER JOURNAL BEARING	NYLATRON
5	VANE SEAT RING	EPT with SS INSERT
6	HEX HEAD CAPSCREW	18-8 STAINLESS STEEL with NYLOC PATCH
7	LOWER JOURNAL BEARING	NYLATRON
8	BFV BODY END PLUG	STEEL
9	BFV VANE	DUCTILE IRON ASTM A-536
10	VANE SHAFT TORQUE PLUG	18-8 STAINLESS STEEL
11	BODY SEAT RING	316 STAINLESS STEEL
12	BODY SEAT O-RING	BUNA-N

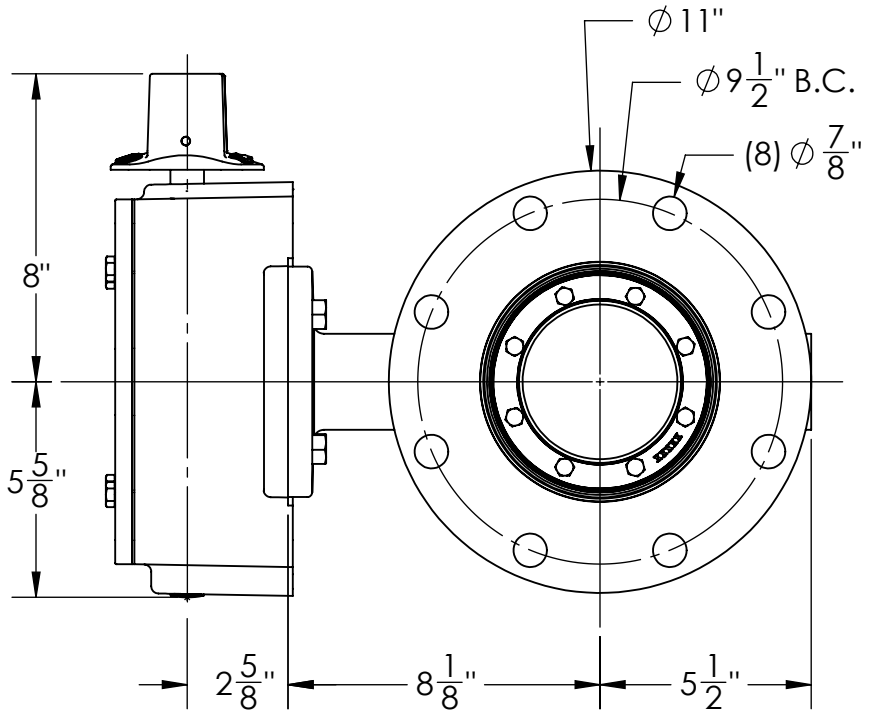
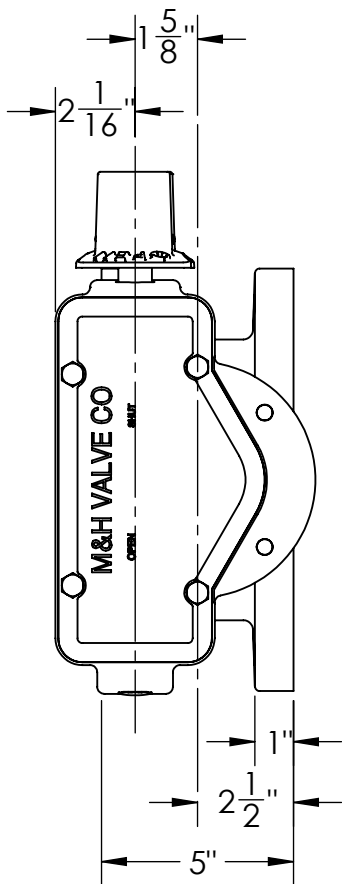
THIS DWG. AND ALL INFORMATION IS OUR PROPERTY AND SHALL NOT BE USED, COPIED, OR REPRODUCED WITHOUT WRITTEN CONSENT. DESIGN AND INVENTION RIGHTS RESERVED.



**KENNEDY VALVE**  
Division of McWane, Inc.  
1021 EAST WATER STREET ELMIRA, NEW YORK 14901

DRAWN: ZF  
DATE: 1/4/17  
DWG. NO. B04FBB11

**4" AWWA C504 - Style 4500 - CL150  
BFV with F/A 12 MSS/ISO Connection  
Sub-Assembly - Material List  
FLANGED END**



1. FLOW MAY BE IN EITHER DIRECTION
2. VALVE SHAFT WILL MEET OR EXCEED AWWA C504 REQUIREMENTS
3. REFERENCE AWWA C504 FOR FLANGES AND DRILLING (ANSI 125)
4. 29 NUMBER OF TURNS TO CLOSE
5. 8 BOLTS ON EACH FLANGE
6. 3/4" DIAMETER OF BOLTS
7. OPERATED BY 2" AWWA OPERATING NUT/WRENCH NUT
8. RATED AND TESTED FOR 150psi WORKING PRESSURE

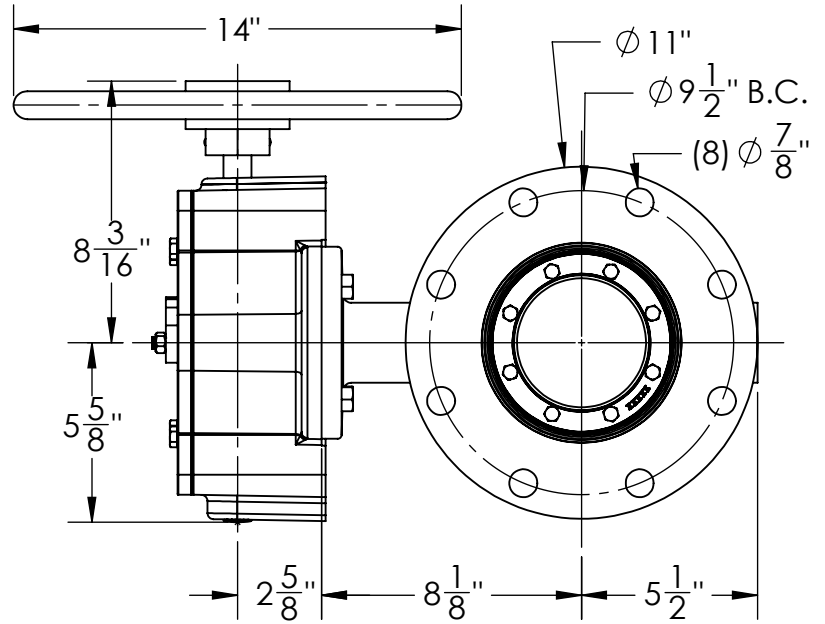
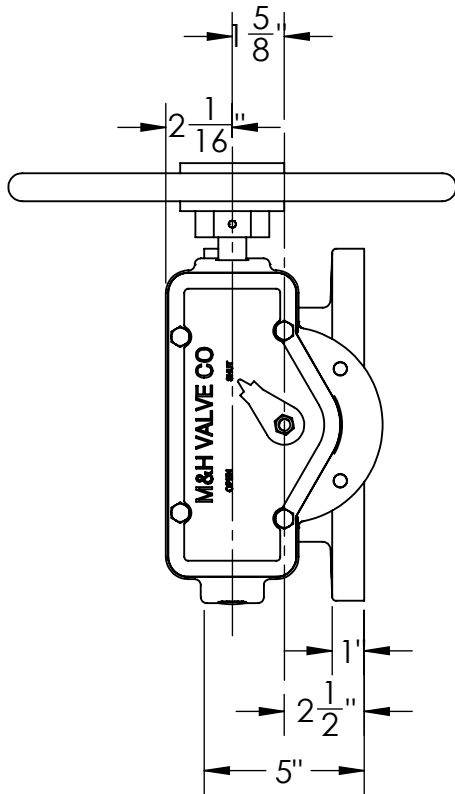
THIS DWG. AND ALL INFORMATION IS OUR PROPERTY AND SHALL NOT BE USED, COPIED, OR REPRODUCED WITHOUT WRITTEN CONSENT. DESIGN AND INVENTION RIGHTS RESERVED.



**KENNEDY VALVE**  
Division of McWane, Inc.  
1021 EAST WATER STREET ELMIRA, NEW YORK 14901

**DRAWN:** CTJ  
**DATE:** 11/26/2018  
**DWG. NO.:** B06FAM11

**6" - Style 4500 - CL150**  
**BFV with F/A 12 MSS/ISO Connection-**  
**FLANGED ENDS - Buried Operator**



1. FLOW MAY BE IN EITHER DIRECTION
2. VALVE SHAFT WILL MEET OR EXCEED AWWA C504 REQUIREMENTS
3. REFERENCE AWWA C504 FOR FLANGES AND DRILLING (ANSI 125)
4. 29 NUMBER OF TURNS TO CLOSE
5. 8 BOLTS ON EACH FLANGE
6. 3/4" DIAMETER OF BOLTS
7. OPERATED BY 2" AWWA OPERATING NUT/WRENCH NUT
8. RATED AND TESTED FOR 150psi WORKING PRESSURE

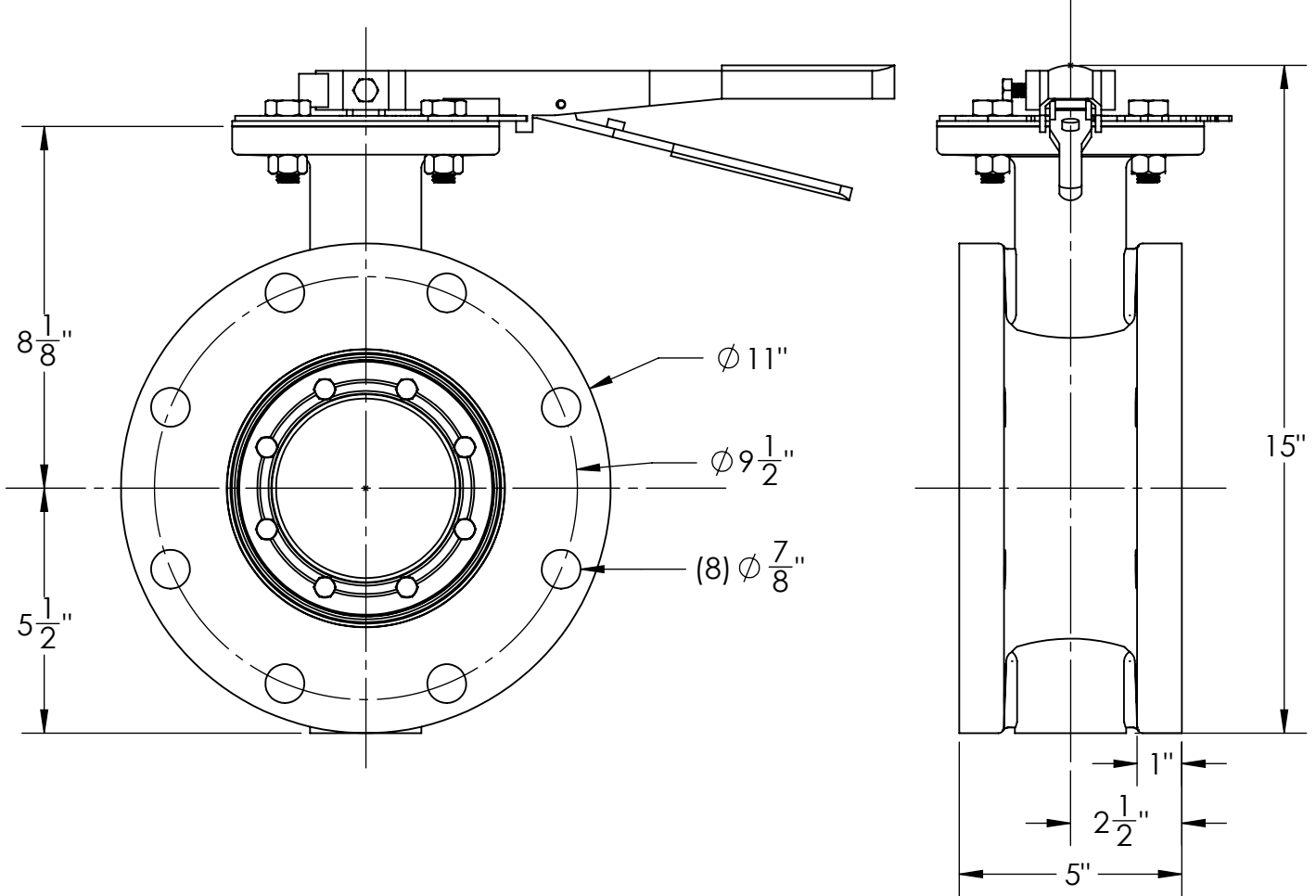
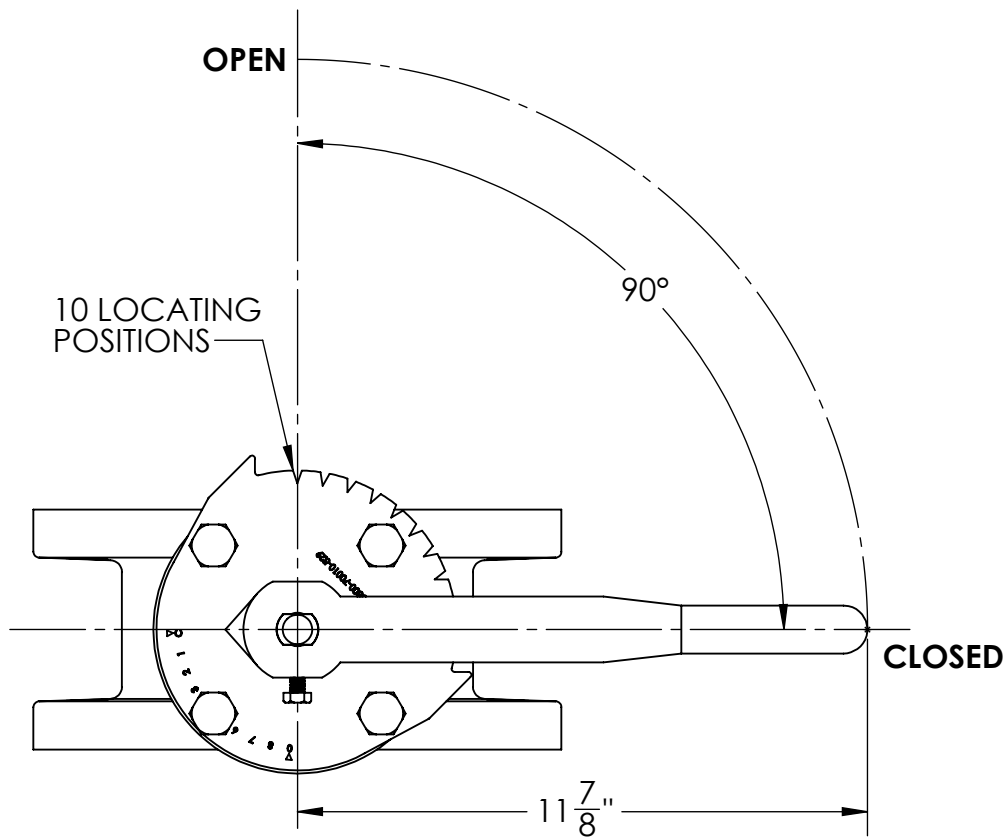
THIS DWG. AND ALL INFORMATION IS OUR PROPERTY AND SHALL NOT BE USED, COPIED, OR REPRODUCED WITHOUT WRITTEN CONSENT. DESIGN AND INVENTION RIGHTS RESERVED.



**KENNEDY VALVE**  
Division of McWane, Inc.  
1021 EAST WATER STREET ELMIRA, NEW YORK 14901

**DRAWN:** CTJ  
**DATE:** 11/26/2018  
**DWG. NO.:** B06FAM11

**6" - Style 4500 - CL150**  
**BFV with F/A 12 MSS/ISO Connection-**  
**FLANGED ENDS - Operator w/**  
**POS. INDICATOR & HAND WHEEL**



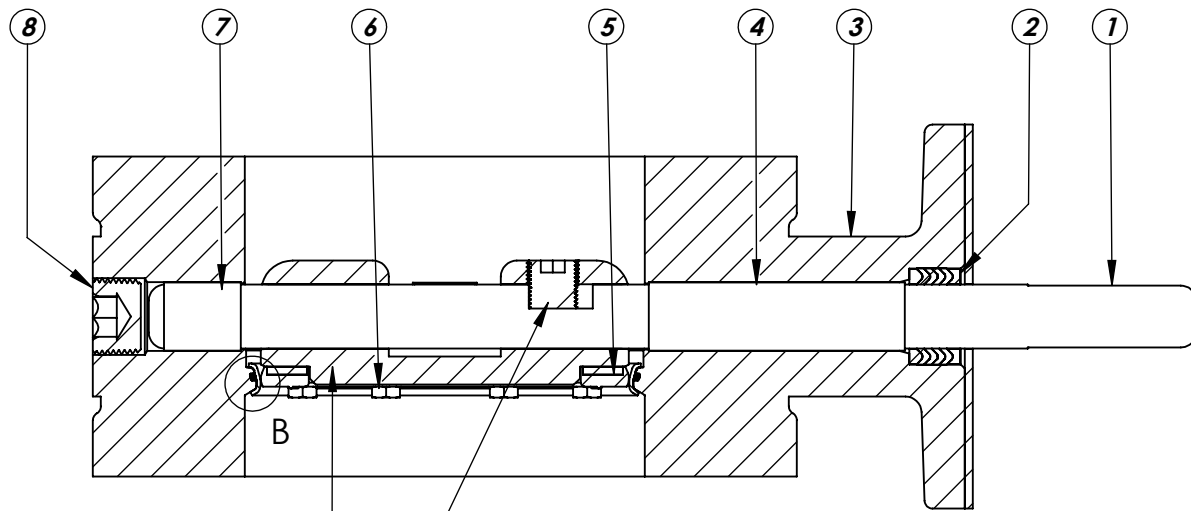
THIS DWG. AND ALL INFORMATION IS OUR PROPERTY AND SHALL NOT BE USED, COPIED, OR REPRODUCED WITHOUT WRITTEN CONSENT. DESIGN AND INVENTION RIGHTS RESERVED.



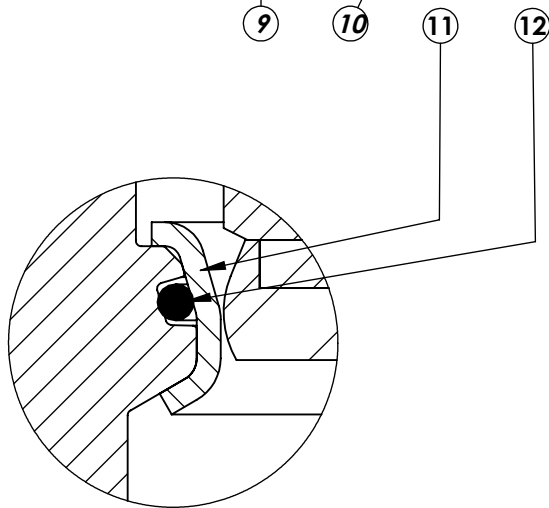
**KENNEDY VALVE**  
 Division of McWane, Inc.  
 1021 EAST WATER STREET ELMIRA, NEW YORK 14901

**DRAWN:** ZF  
**DATE:** 11/30/2018  
**DWG. NO.** B06FAL1100

6" ISO BFV FLANGED END  
 W/ FA12 MOUNTING  
 LEVER OPERATOR



SECTION A-A  
SCALE 1 : 3



DETAIL B  
SCALE 2 : 1

ITEM NO.	DESCRIPTION	MATERIAL
1	VANE SHAFT	304 STAINLESS STEEL, ASTM A-276
2	V-RING PACKING SET	EPDM, BUNA-N
3	BFV BODY	DUCTILE IRON ASTM A-536
4	UPPER JOURNAL BEARING	NYLATRON
5	VANE SEAT RING	EPT with SS INSERT
6	HEX HEAD CAPSCREW	18-8 STAINLESS STEEL with NYLOC PATCH
7	LOWER JOURNAL BEARING	NYLATRON
8	BFV BODY END PLUG	STEEL
9	BFV VANE	DUCTILE IRON ASTM A-536
10	VANE SHAFT TORQUE PLUG	18-8 STAINLESS STEEL
11	BODY SEAT RING	316 STAINLESS STEEL
12	BODY SEAT O-RING	BUNA-N

THIS DWG. AND ALL INFORMATION IS OUR PROPERTY AND SHALL NOT BE USED, COPIED, OR REPRODUCED WITHOUT WRITTEN CONSENT. DESIGN AND INVENTION RIGHTS RESERVED.

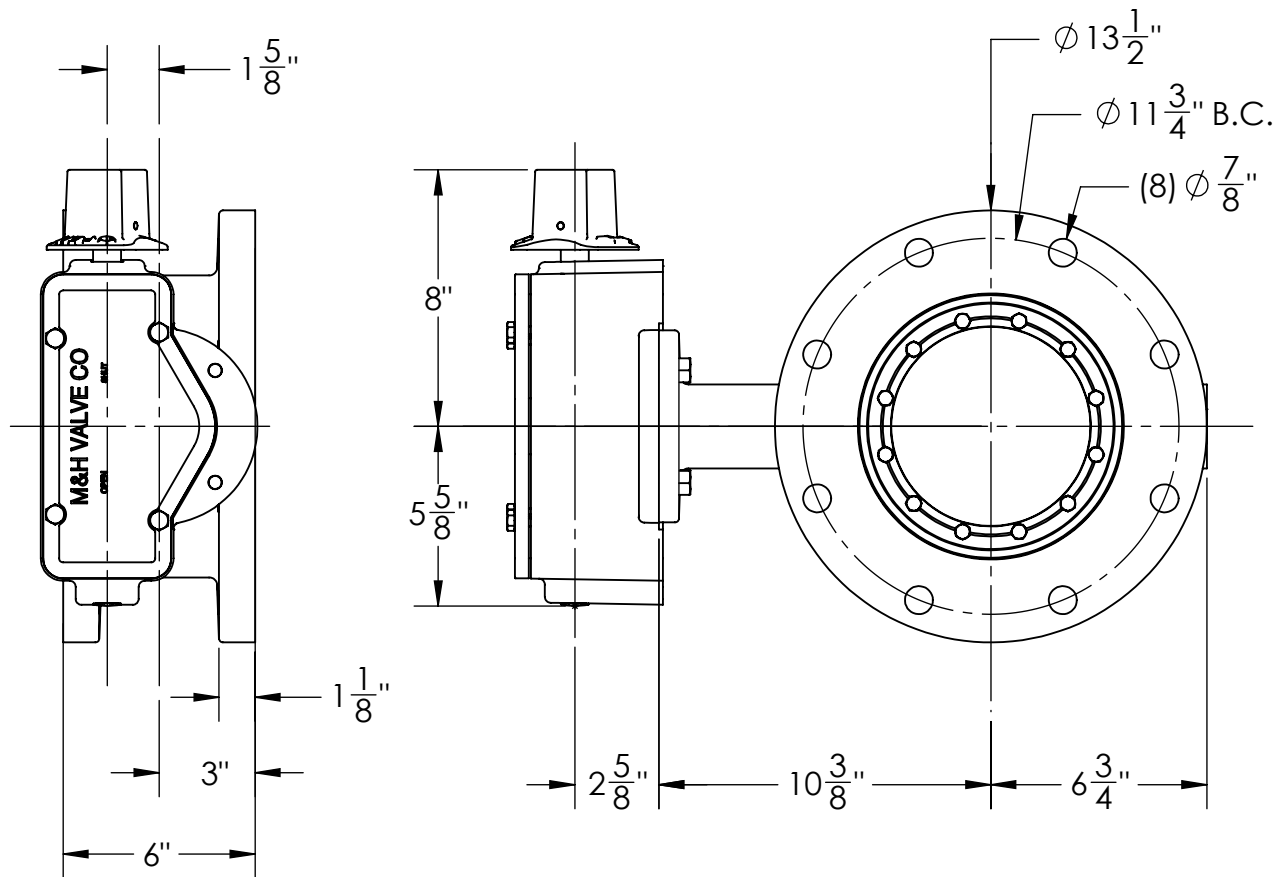


**KENNEDY VALVE**  
Division of McWane, Inc.  
1021 EAST WATER STREET ELMIRA, NEW YORK 14901

**DRAWN:** ZF  
**DATE:** 1/6/17  
**DWG. NO.** B06FBB11

**6" AWWA C504 - Style 4500 - CL150  
BFV with F/A 12 MSS/ISO Connection  
Sub-Assembly - Material List  
FLANGED END**





1. FLOW MAY BE IN EITHER DIRECTION
2. VALVE SHAFT WILL MEET OR EXCEED AWWA C504 REQUIREMENTS
3. REFERENCE AWWA C504 FOR FLANGES AND DRILLING (ANSI 125)
4. 29 TURNS TO CLOSE
5. 8 BOLTS ON EACH FLANGE
6. 3/4" DIAMETER OF BOLTS
7. OPERATED BY 2" AWWA OPERATING NUT/WRENCH NUT
8. RATED AND TESTED FOR 150psi WORKING PRESSURE

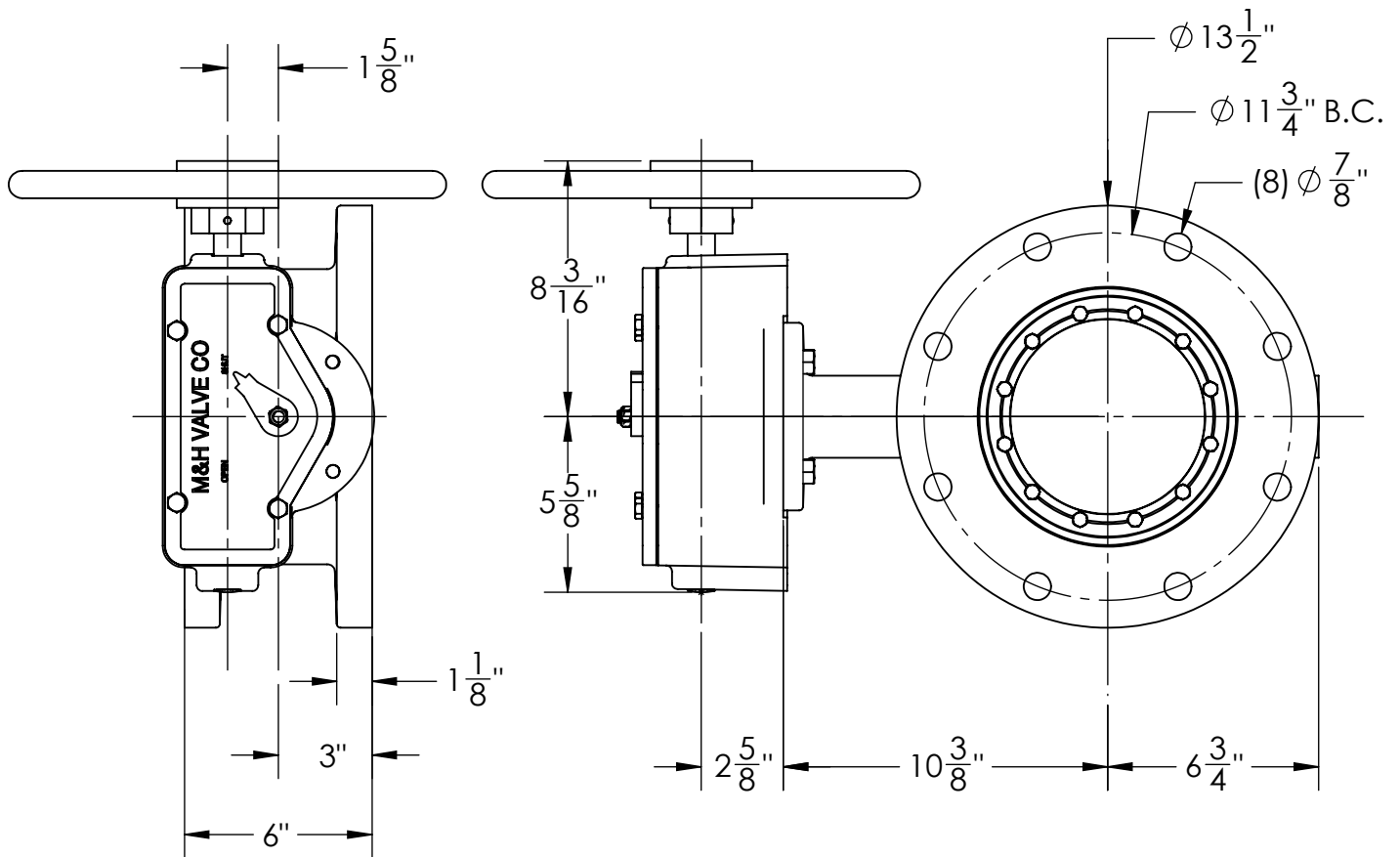
THIS DWG. AND ALL INFORMATION IS OUR PROPERTY AND SHALL NOT BE USED, COPIED, OR REPRODUCED WITHOUT WRITTEN CONSENT. DESIGN AND INVENTION RIGHTS RESERVED.



**KENNEDY VALVE**  
Division of McWane, Inc.  
1021 EAST WATER STREET ELMIRA, NEW YORK 14901

**DRAWN:** CTJ  
**DATE:** 11/26/2018  
**DWG. NO.** B08FAM11

**8" - Style 4500 - CL150**  
**BFV with F/A 12 MSS/ISO Connection-**  
**FLANGED ENDS - Buried Operator**



1. FLOW MAY BE IN EITHER DIRECTION
2. VALVE SHAFT WILL MEET OR EXCEED AWWA C504 REQUIREMENTS
3. REFERENCE AWWA C504 FOR FLANGES AND DRILLING (ANSI 125)
4. 29 TURNS TO CLOSE
5. 8 BOLTS ON EACH FLANGE
6.  $\frac{3}{4}$ " DIAMETER OF BOLTS
7. OPERATED BY 2" AWWA OPERATING NUT/WRENCH NUT
8. RATED AND TESTED FOR 150psi WORKING PRESSURE

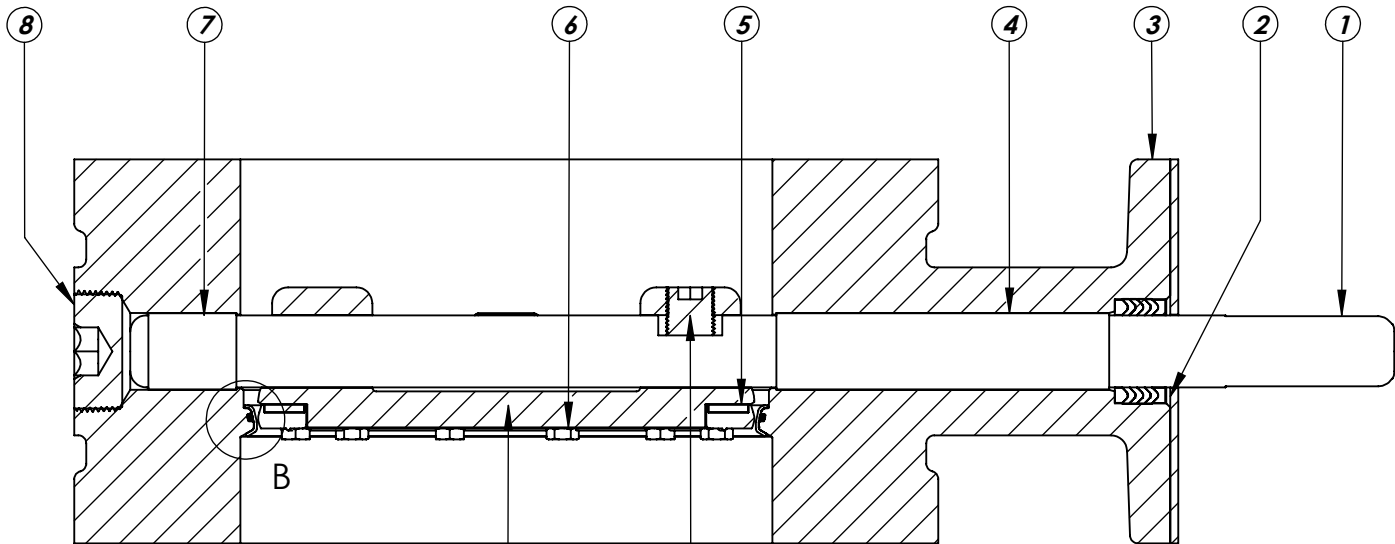
THIS DWG. AND ALL INFORMATION IS OUR PROPERTY AND SHALL NOT BE USED, COPIED, OR REPRODUCED WITHOUT WRITTEN CONSENT. DESIGN AND INVENTION RIGHTS RESERVED.



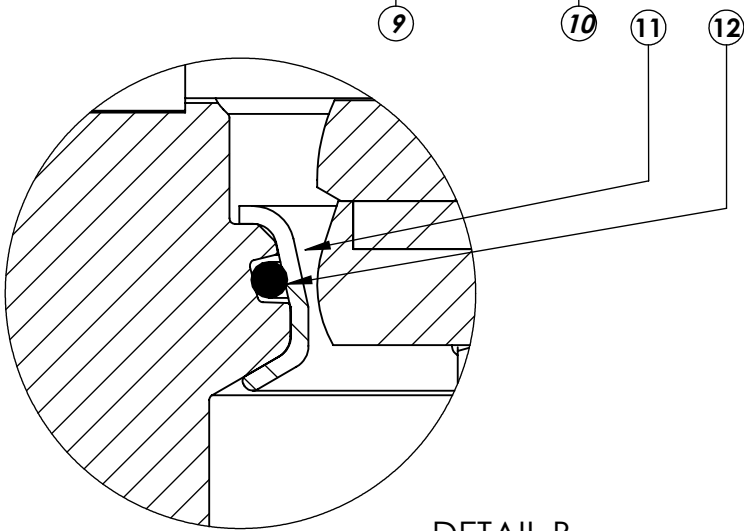
**KENNEDY VALVE**  
Division of McWane, Inc.  
1021 EAST WATER STREET ELMIRA, NEW YORK 14901

**DRAWN:** CTJ  
**DATE:** 11/26/2018  
**DWG. NO.** B08FAM11

**8" - Style 4500 - CL150**  
**BFV with F/A 12 MSS/ISO Connection-**  
**FLANGED ENDS - OP w/ HANDWHEEL**  
**& POSITION INDICATOR**



SECTION A-A  
SCALE 1 : 3



DETAIL B  
SCALE 2 : 1

ITEM NO.	DESCRIPTION	MATERIAL
1	VANE SHAFT	304 STAINLESS STEEL, ASTM A-276
2	V-RING PACKING SET	EPDM, BUNA-N
3	BFV BODY	DUCTILE IRON ASTM A-536
4	UPPER JOURNAL BEARING	NYLATRON
5	VANE SEAT RING	EPT with SS INSERT
6	HEX HEAD CAPSCREW	18-8 STAINLESS STEEL with NYLOC PATCH
7	LOWER JOURNAL BEARING	NYLATRON
8	BFV BODY END PLUG	STEEL
9	BFV VANE	DUCTILE IRON ASTM A-536
10	VANE SHAFT TORQUE PLUG	18-8 STAINLESS STEEL
11	BODY SEAT RING	316 STAINLESS STEEL
12	BODY SEAT O-RING	BUNA-N

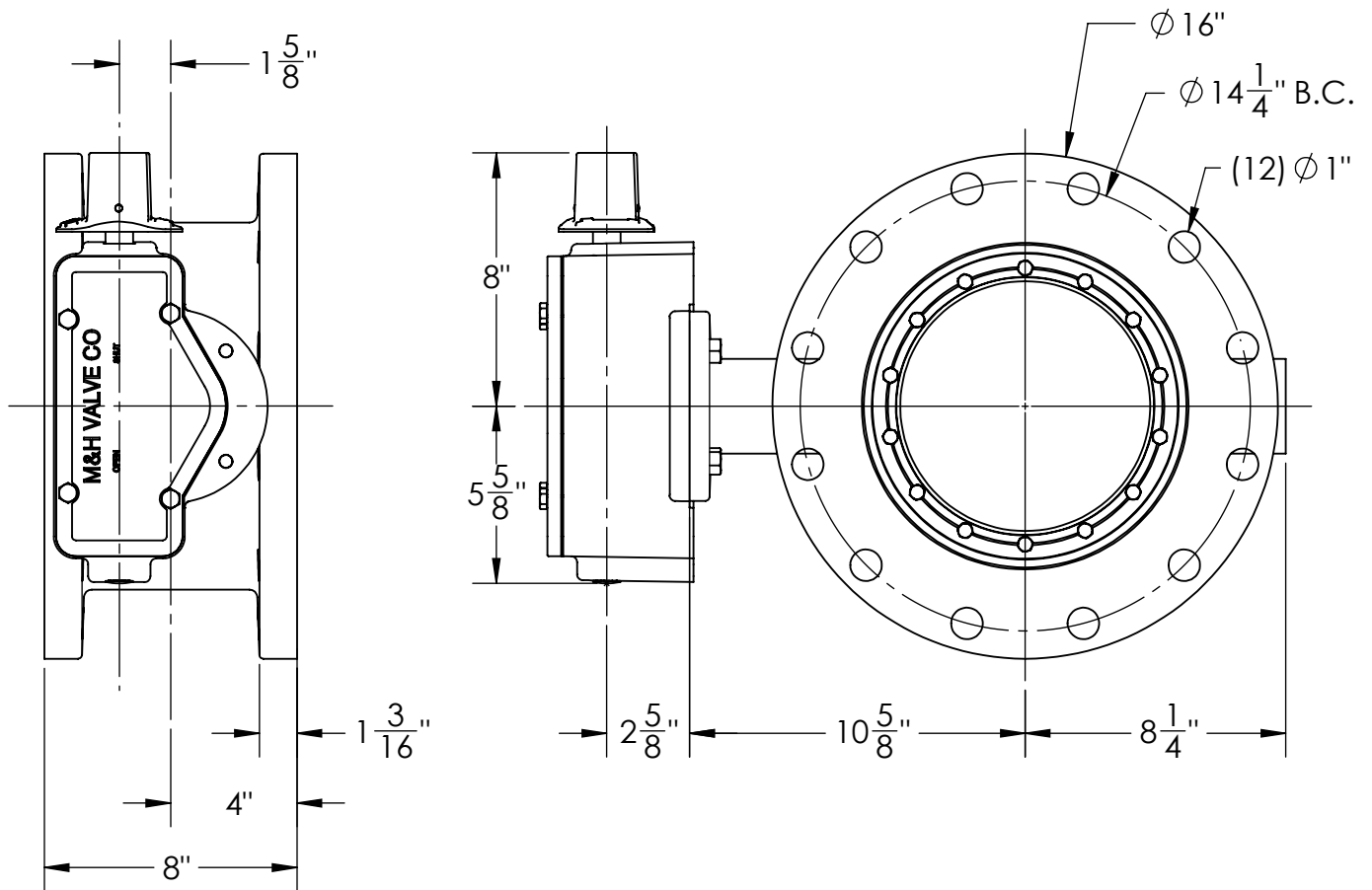
THIS DWG. AND ALL INFORMATION IS OUR PROPERTY AND SHALL NOT BE USED, COPIED, OR REPRODUCED WITHOUT WRITTEN CONSENT. DESIGN AND INVENTION RIGHTS RESERVED.



**KENNEDY VALVE**  
Division of McWane, Inc.  
1021 EAST WATER STREET ELMIRA, NEW YORK 14901

**DRAWN:** ZF  
**DATE:** 1/9/17  
**DWG. NO.** B08FBB11

**8" AWWA C504 - Style 4500 - CL150  
BFV with F/A 12 MSS/ISO Connection  
Sub-Assembly - Material List  
FLANGED END**



1. FLOW MAY BE IN EITHER DIRECTION
2. VALVE SHAFT WILL MEET OR EXCEED AWWA C504 REQUIREMENTS
3. REFERENCE AWWA C504 FOR FLANGES AND DRILLING (ANSI 125)
4. 29 TURNS TO CLOSE
5. 12 BOLTS ON EACH FLANGE
6. 1" DIAMETER OF BOLTS
7. OPERATED BY 2" AWWA OPERATING NUT/WRENCH NUT
8. RATED AND TESTED FOR 150psi WORKING PRESSURE

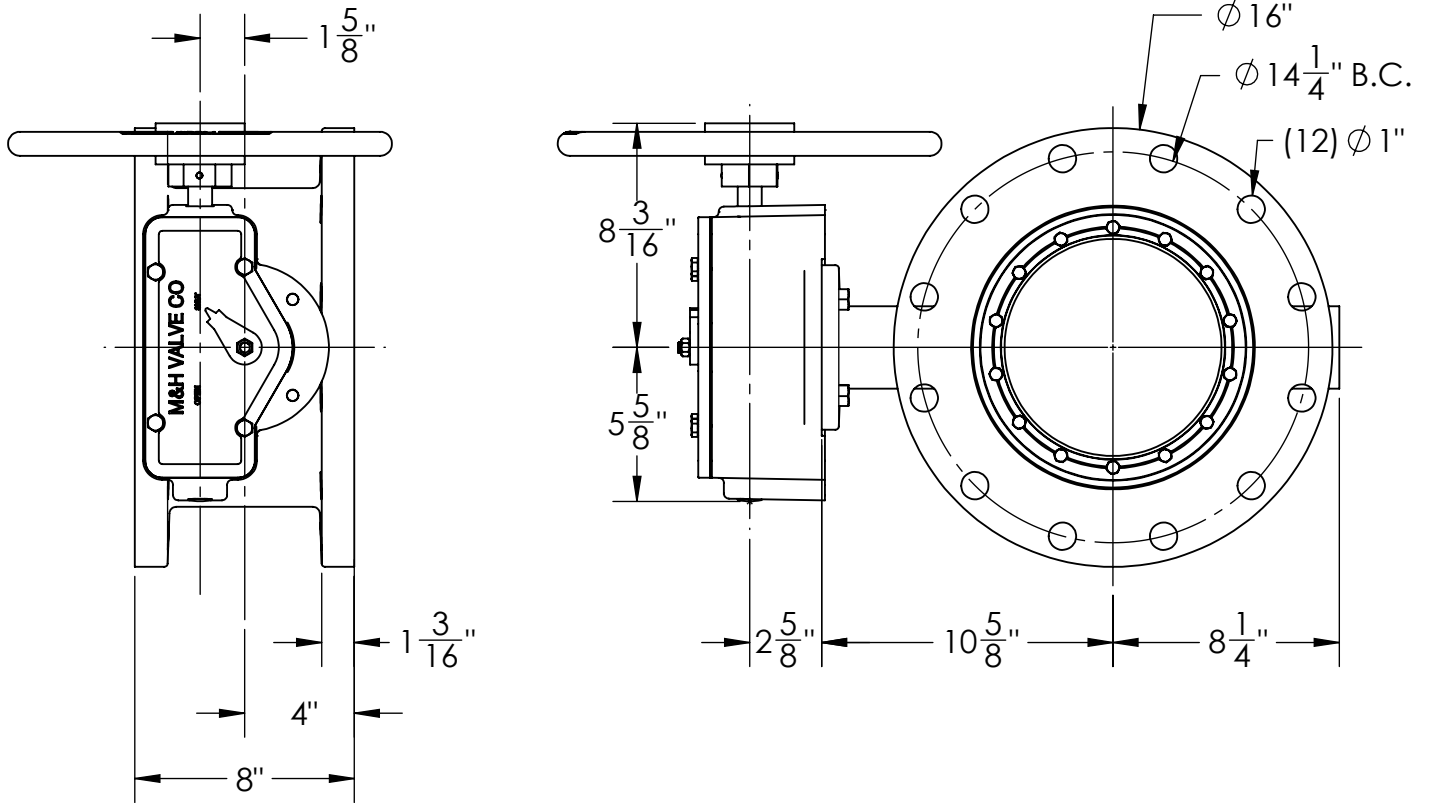
THIS DWG. AND ALL INFORMATION IS OUR PROPERTY AND SHALL NOT BE USED, COPIED, OR REPRODUCED WITHOUT WRITTEN CONSENT. DESIGN AND INVENTION RIGHTS RESERVED.



**KENNEDY VALVE**  
Division of McWane, Inc.  
1021 EAST WATER STREET ELMIRA, NEW YORK 14901

**DRAWN:** CTJ  
**DATE:** 11/26/2018  
**DWG. NO.:** B10FAM11

**10" - Style 4500 - CL150**  
**BFV with F/A 12 MSS/ISO Connection-**  
**FLANGED ENDS - Buried Operator**



1. FLOW MAY BE IN EITHER DIRECTION
2. VALVE SHAFT WILL MEET OR EXCEED AWWA C504 REQUIREMENTS
3. REFERENCE AWWA C504 FOR FLANGES AND DRILLING (ANSI 125)
4. 29 TURNS TO CLOSE
5. 12 BOLTS ON EACH FLANGE
6. 7/8" DIAMETER OF BOLTS
7. OPERATED BY 2" AWWA OPERATING NUT/WRENCH NUT
8. RATED AND TESTED FOR 150psi WORKING PRESSURE

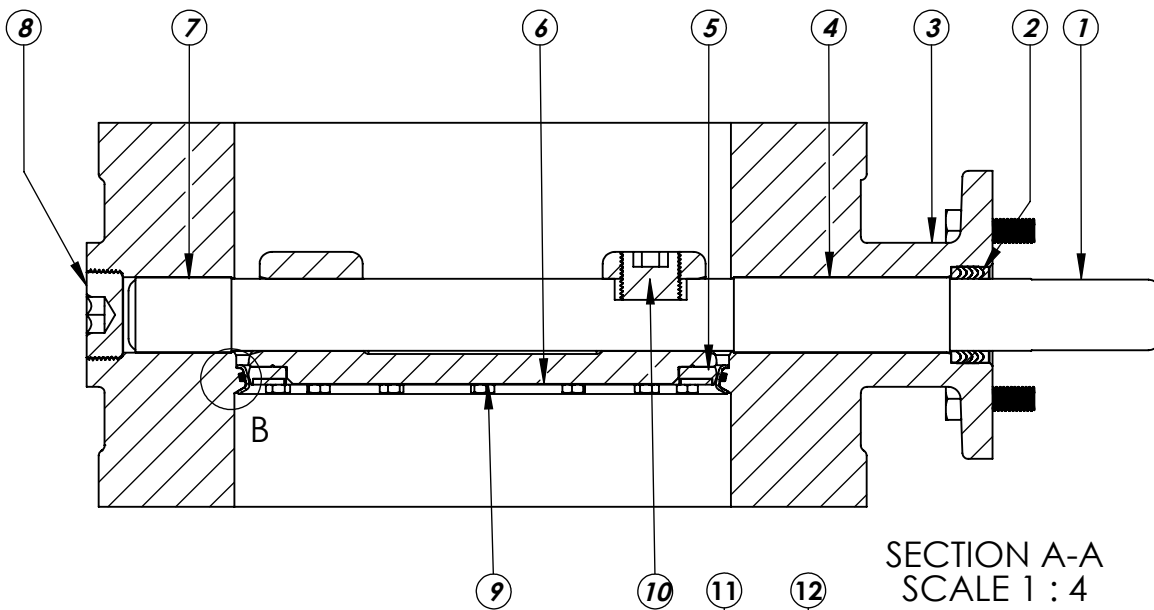
THIS DWG. AND ALL INFORMATION IS OUR PROPERTY AND SHALL NOT BE USED, COPIED, OR REPRODUCED WITHOUT WRITTEN CONSENT. DESIGN AND INVENTION RIGHTS RESERVED.



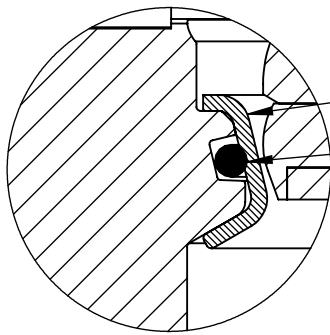
**KENNEDY VALVE**  
Division of McWane, Inc.  
1021 EAST WATER STREET ELMIRA, NEW YORK 14901

**DRAWN:** CTJ  
**DATE:** 1/23/2019  
**DWG. NO.** B10FAM1101

**10" - Style 4500 - CL150**  
**BFV with F/A 12 MSS/ISO Connection-**  
**HANDWHEEL OPERATOR - FLANGED ENDS**



SECTION A-A  
SCALE 1 : 4



DETAIL B  
SCALE 2 : 1.5

ITEM NO.	DESCRIPTION	MATERIAL
1	VANE SHAFT	304 STAINLESS STEEL, ASTM A-276
2	V-RING PACKING SET	EPDM, BUNA-N
3	BFV BODY	DUCTILE IRON ASTM A-536
4	UPPER JOURNAL BEARING	NYLATRON
5	VANE SEAT RING	EPT with SS INSERT
6	HEX HEAD CAPSCREW	18-8 STAINLESS STEEL with NYLOC PATCH
7	LOWER JOURNAL BEARING	NYLATRON
8	BFV BODY END PLUG	STEEL
9	BFV VANE	DUCTILE IRON ASTM A-536
10	VANE SHAFT TORQUE PLUG	18-8 STAINLESS STEEL
11	BODY SEAT RING	316 STAINLESS STEEL
12	BODY SEAT O-RING	BUNA-N

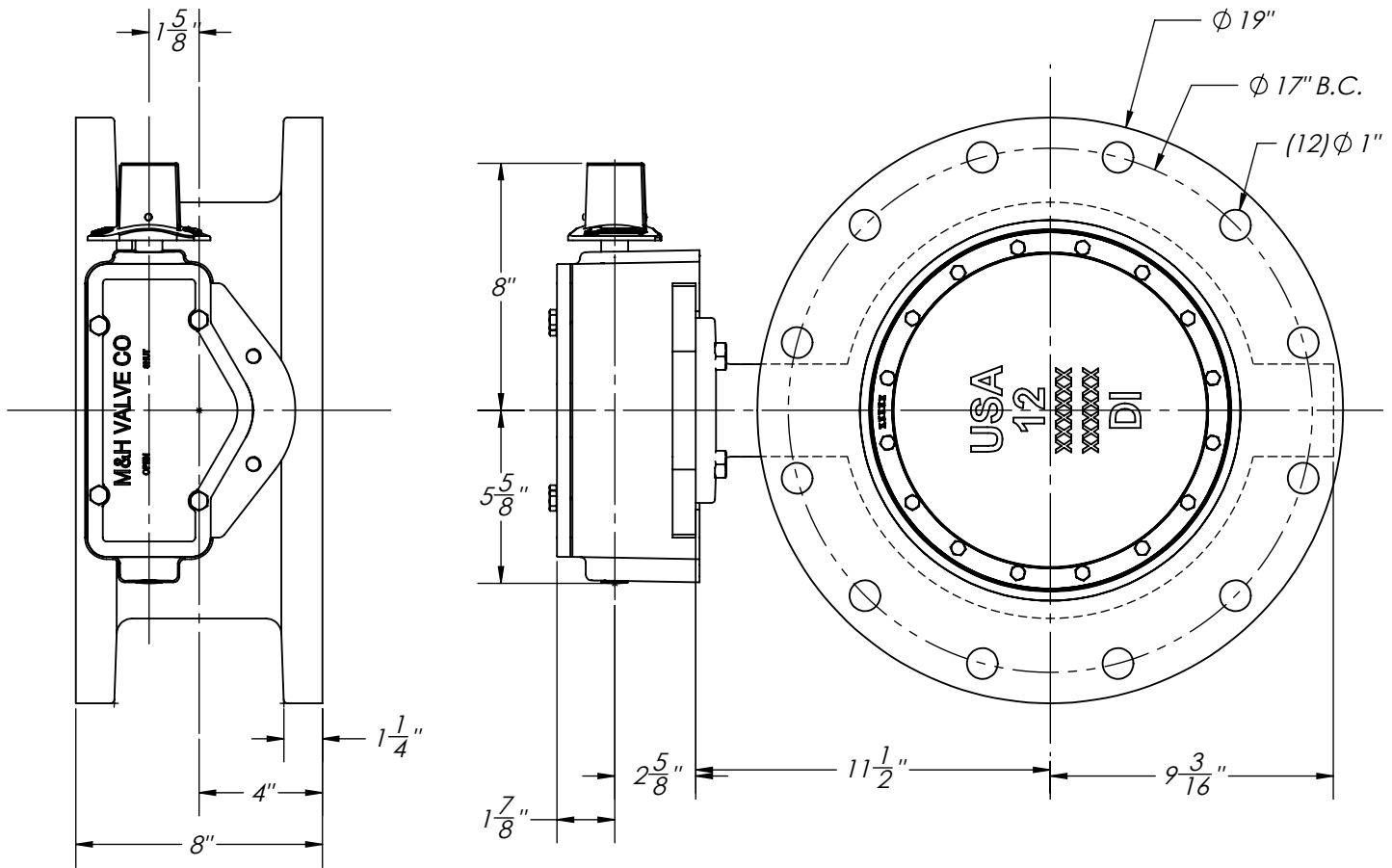
THIS DWG. AND ALL INFORMATION IS OUR PROPERTY AND SHALL NOT BE USED, COPIED, OR REPRODUCED WITHOUT WRITTEN CONSENT. DESIGN AND INVENTION RIGHTS RESERVED.



**KENNEDY VALVE**  
Division of McWane, Inc.  
1021 EAST WATER STREET ELMIRA, NEW YORK 14901

**DRAWN:** ZF  
**DATE:** 1/9/17  
**DWG. NO.** B10FBB11

**10" AWWA C504 - Style 4500 - CL150  
BFV with F/A 12 MSS/ISO Connection  
Sub-Assembly - Material List  
FLANGED END**



1. FLOW MAY BE IN EITHER DIRECTION
2. VALVE SHAFT WILL MEET OR EXCEED AWWA C504 REQUIREMENTS
3. REFERENCE AWWA C504 FOR FLANGES AND DRILLING (ANSI 125)
4. 29 TURNS TO CLOSE
5. 12 BOLTS ON EACH FLANGE
6. 7/8" DIAMETER OF BOLTS
7. OPERATED BY 2" AWWA OPERATING NUT/WRENCH NUT
8. RATED AND TESTED FOR 150psi WORKING PRESSURE

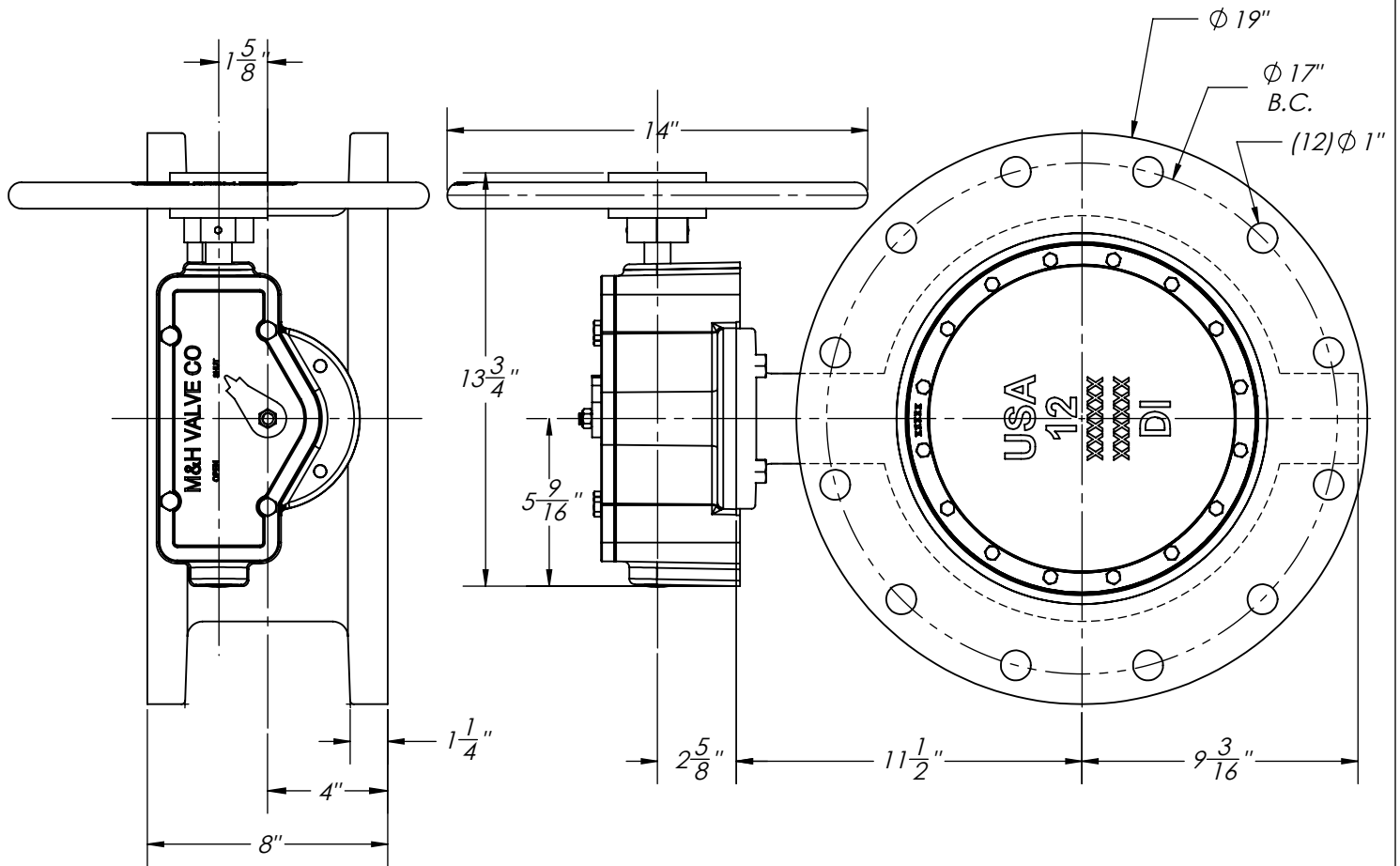
THIS DWG. AND ALL INFORMATION IS OUR PROPERTY AND SHALL NOT BE USED, COPIED, OR REPRODUCED WITHOUT WRITTEN CONSENT. DESIGN AND INVENTION RIGHTS RESERVED.



**KENNEDY VALVE**  
Division of McWane, Inc.  
1021 EAST WATER STREET ELMIRA, NEW YORK 14901

**DRAWN:** CTJ  
**DATE:** 11/26/2018  
**DWG. NO.**  
B12FAM11

**12" - Style 4500 - CL150**  
**BFV with F/A 12 MSS/ISO Connection-**  
**FLANGED ENDS - Buried Operator**



1. FLOW MAY BE IN EITHER DIRECTION
2. VALVE SHAFT WILL MEET OR EXCEED AWWA C504 REQUIREMENTS
3. REFERENCE AWWA C504 FOR FLANGES AND DRILLING (ANSI 125)
4. 29 TURNS TO CLOSE
5. 12 BOLTS ON EACH FLANGE
6. 7/8" DIAMETER OF BOLTS
7. OPERATED BY HANDWHEEL
8. RATED AND TESTED FOR 150psi WORKING PRESSURE

THIS DWG. AND ALL INFORMATION IS OUR PROPERTY AND SHALL NOT BE USED, COPIED, OR REPRODUCED WITHOUT WRITTEN CONSENT. DESIGN AND INVENTION RIGHTS RESERVED.

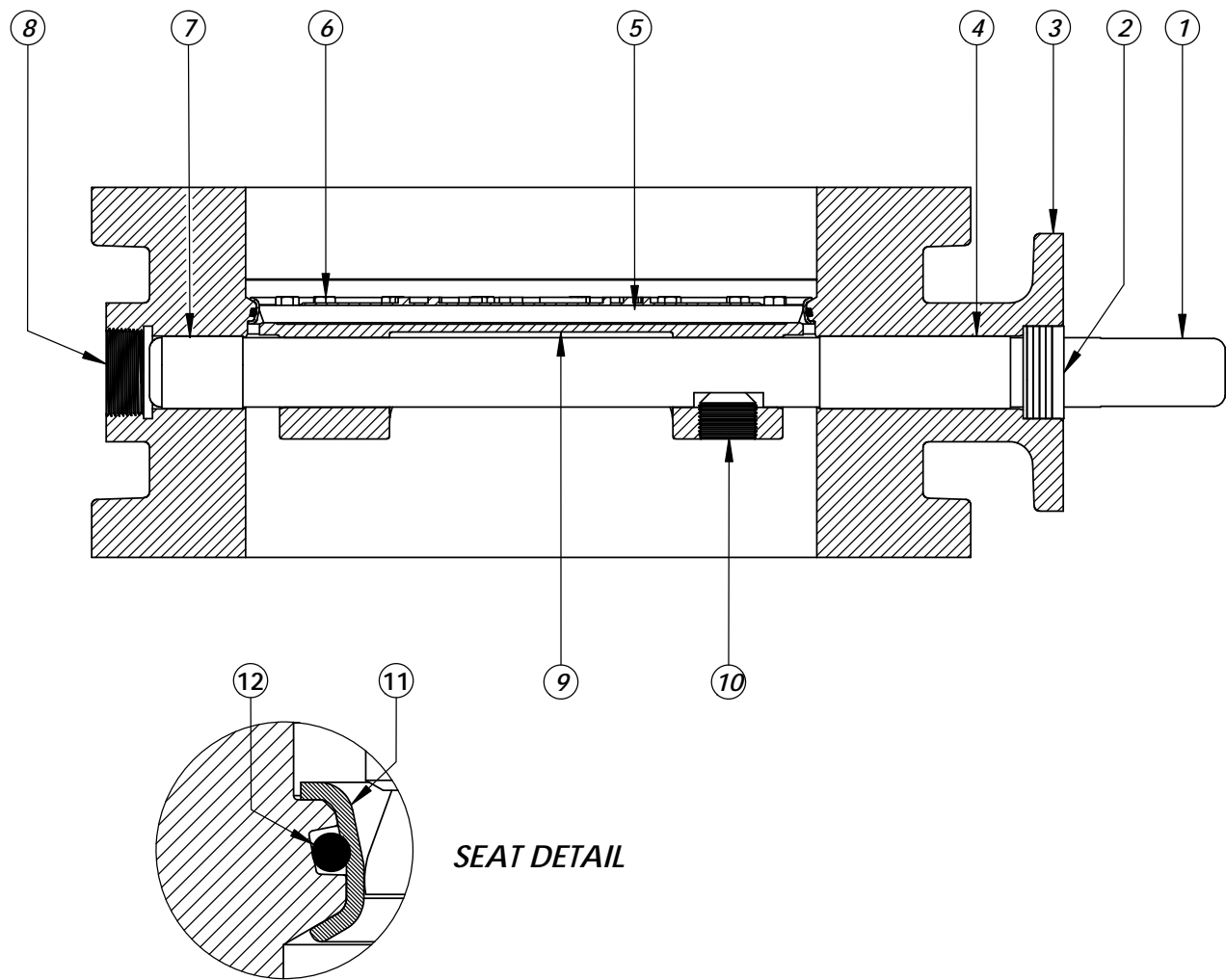


**KENNEDY VALVE**  
Division of McWane, Inc.  
1021 EAST WATER STREET ELMIRA, NEW YORK 14901

**DRAWN:** ZF  
**DATE:** 1/23/2019  
**DWG. NO.**  
B12FAM1101

**12" - Style 4500 - CL150**  
**BFV with F/A 12 MSS/ISO Connection-**  
**HANDWHEEL OPERATOR - FLANGED ENDS**





**SEAT DETAIL**

<b>ITEM NO.</b>	<b>DESCRIPTION</b>	<b>MATERIAL</b>
1	VANE SHAFT	304 STAINLESS STEEL, ASTM A-276
2	V-RING PACKING SET	EPDM, BUNA-N
3	BFV BODY	DUCTILE IRON ASTM A-536
4	UPPER JOURNAL BEARING	NYLATRON
5	VANE SEAT RING	EPT with SS INSERT
6	HEX HEAD CAPSCREW	18-8 STAINLESS STEEL with NYLOC PATCH
7	LOWER JOURNAL BEARING	NYLATRON
8	BFV BODY END PLUG	STEEL
9	BFV VANE	DUCTILE IRON ASTM A-536
10	VANE SHAFT TORQUE PLUG	18-8 STAINLESS STEEL
11	BODY SEAT RING	316 STAINLESS STEEL
12	BODY SEAT O-RING	BUNA-N

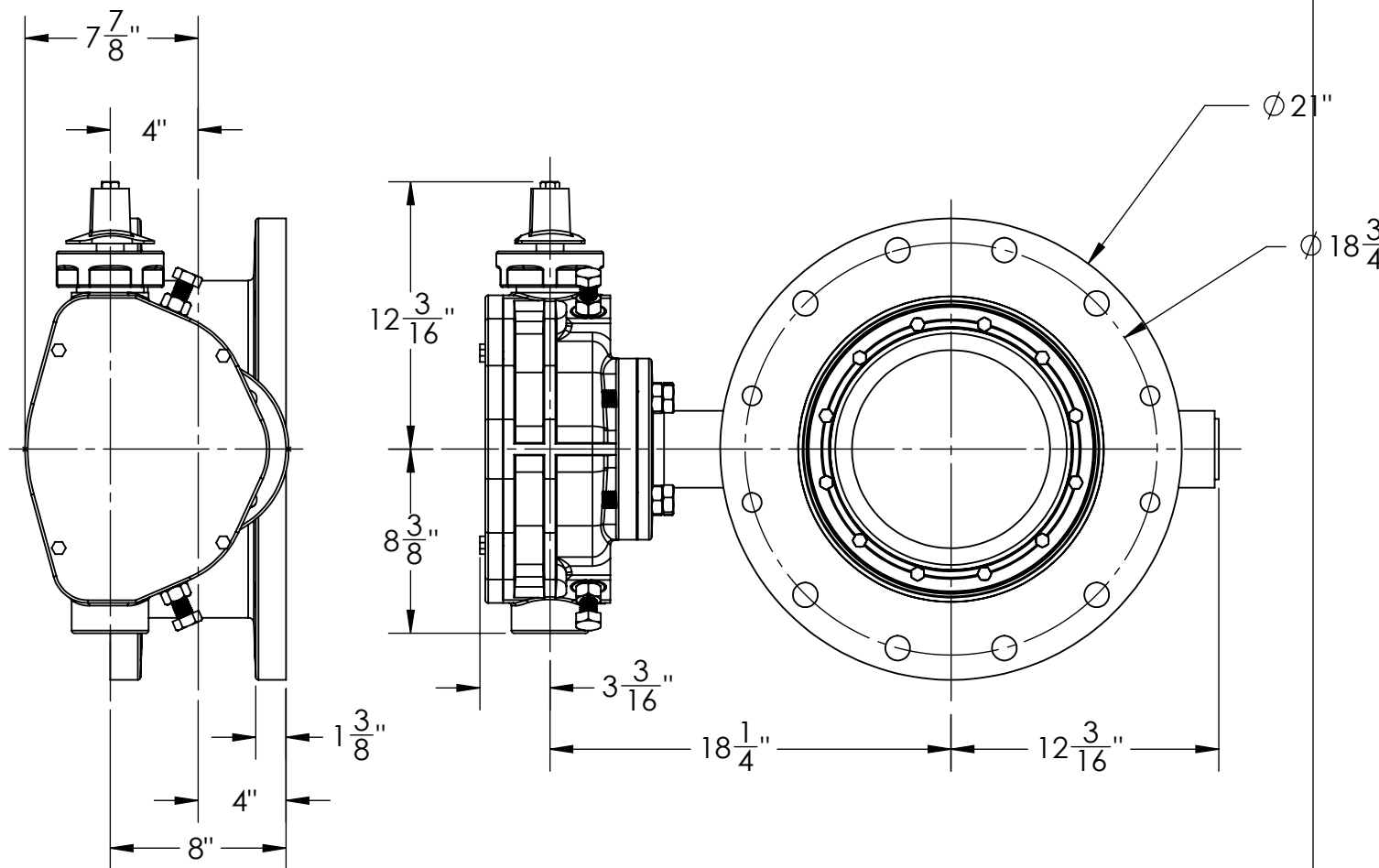
THIS DWG. AND ALL INFORMATION IS OUR PROPERTY AND SHALL NOT BE USED, COPIED, OR REPRODUCED WITHOUT WRITTEN CONSENT. DESIGN AND INVENTION RIGHTS RESERVED.



**KENNEDY VALVE**  
Division of McWane, Inc.  
1021 EAST WATER STREET ELMIRA, NEW YORK 14901

**DRAWN:** KLM  
**DATE:** 10/2016  
**DWG. NO.**  
BFE-15-45-312-ISO

**12" AWWA C504 - Style 4500 - CL150  
BFV with F/A 12 MSS/ISO Connection  
Sub-Assembly - Material List  
FLANGED END**



1. FLOW MAY BE IN EITHER DIRECTION
2. VALVE SHAFT WILL MEET OR EXCEED AWWA C504 STANDARDS
3. 48 TURNS TO CLOSE
4. 12 BOLTS ON EACH FLANGE
5. 1" DIA. OF BOLTS
6. OPERATED BY 2" AWWA OPERATING NUT/WRENCH NUT
7. RATED AND TESTED FOR 150psi WORKING PRESSURE
8. WEIGHT OF VALVE IS 450 LBS.

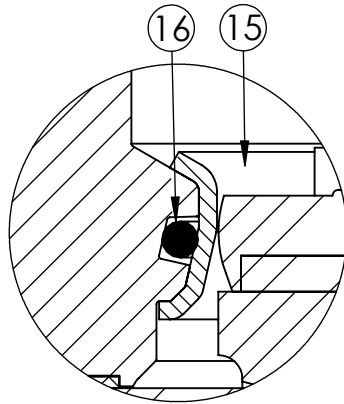
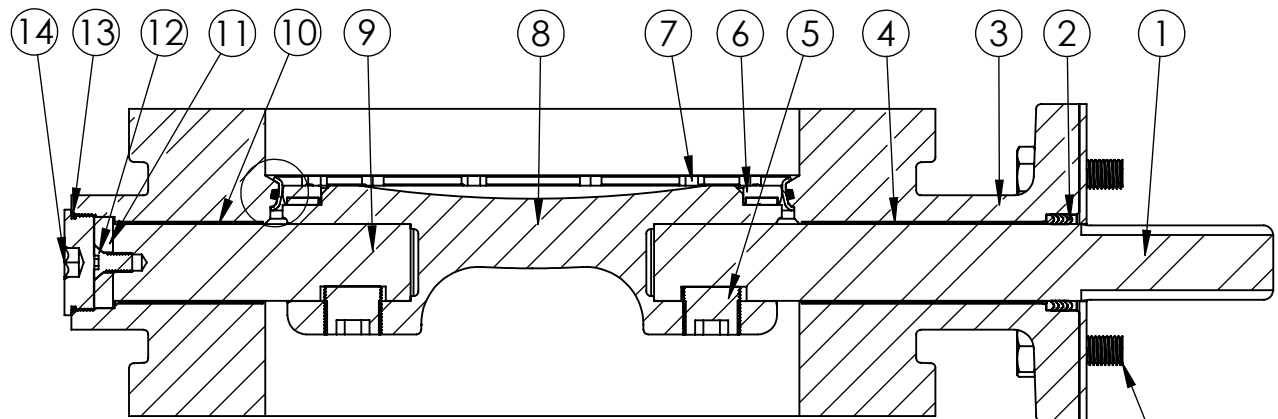
THIS DWG. AND ALL INFORMATION IS OUR PROPERTY AND SHALL NOT BE USED, COPIED, OR REPRODUCED WITHOUT WRITTEN CONSENT. DESIGN AND INVENTION RIGHTS RESERVED.



**KENNEDY VALVE**  
Division of McWane, Inc.  
1021 EAST WATER STREET ELMIRA, NEW YORK 14901

**DRAWN:** CTJ  
**DATE:** 11/26/2018  
**DWG. NO.**  
B14FAM11

14" - Style 4500 - CL150  
BFV with F/A16 MSS/ISO Connection-  
FE x FE ENDS - Buried Operator



**SEAT DETAIL**

<b>ITEM NO.</b>	<b>DESCRIPTION</b>	<b>MATERIAL</b>
1	OPERATOR SHAFT	304 STAINLESS STEEL, ASTM A-276
2	V-RING PACKING SET	EPDM, BUNA-N
3	BFV BODY	DUCTILE IRON ASTM A-536
4	UPPER JOURNAL BEARING	FIBER & REINFORCED TEFLON
5	TORQUE PLUG	304 STAINLESS STEEL, ASTM A-276
6	VANE SEAT RING	EPT W/ STAINLESS STEEL INSERT
7	HEX HEAD CAP SCREW	18-8 STAINLESS STEEL W/ NYLOC PATCH
8	BFV VANE	DUCTILE IRON ASTM A-276
9	THRUST SHAFT	304 STAINLESS STEEL, ASTM A-276
10	LOWER JOURNAL BEARING	FIBER & REINFORCED TEFLON
11	THRUST BEARING	BRONZE ALLOY
12	THRUST BEARING CAP SCREW	18-8 STAINLESS STEEL
13	BODY END PLUG O-RING	BUNA-N
14	BODY END PLUG	STEEL
15	BODY SEAT RING	316 STAINLESS STEEL
16	BODY SEAT O-RING	BUNA-N
17	OPERATOR MOUNTING BOLTS	18-8 STAINLESS STEEL
18	ISO F/A16 SEAL PLATE	COMMERCIAL STEEL

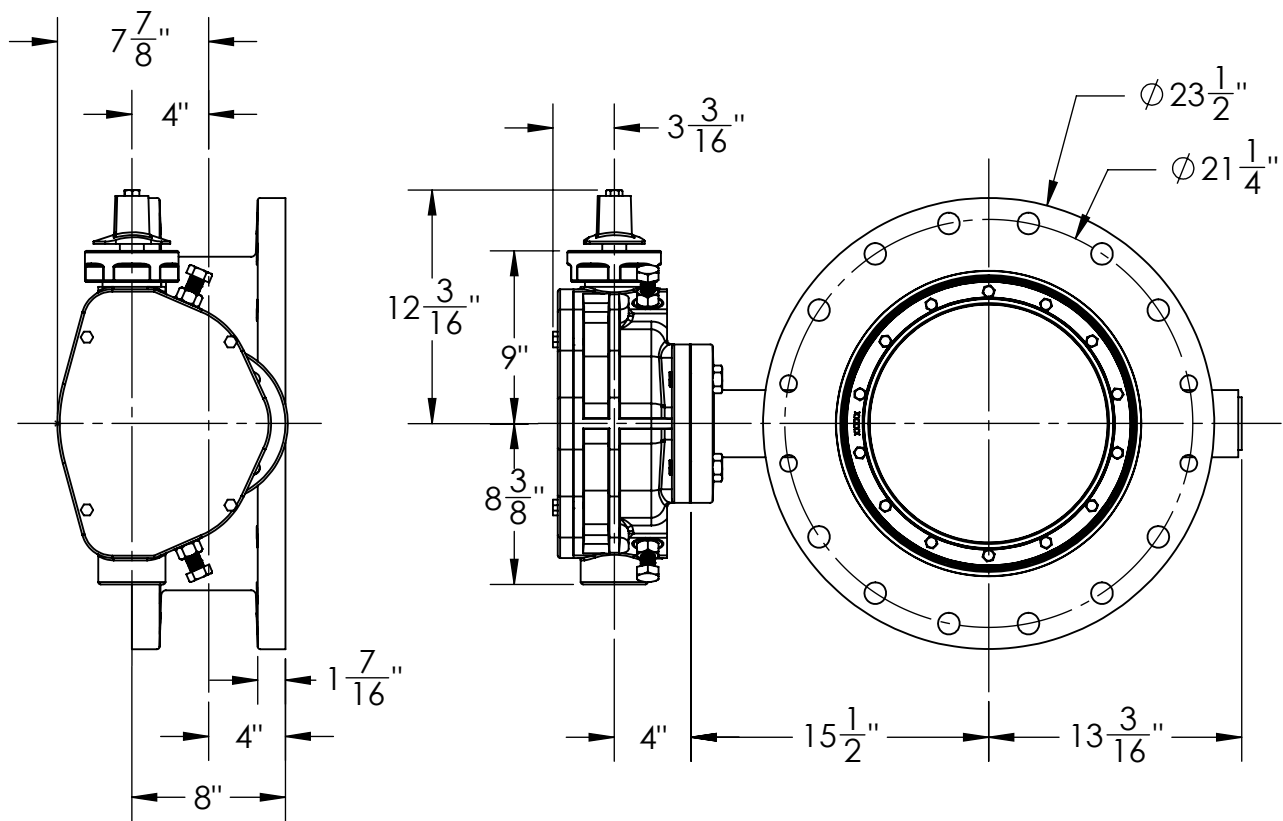
THIS DWG. AND ALL INFORMATION IS OUR PROPERTY AND SHALL NOT BE USED, COPIED, OR REPRODUCED WITHOUT WRITTEN CONSENT. DESIGN AND INVENTION RIGHTS RESERVED.



**KENNEDY VALVE**  
Division of McWane, Inc.  
1021 EAST WATER STREET ELMIRA, NEW YORK 14901

**DRAWN:** ZF  
**DATE:** 8/31/2018  
**DWG. NO.** B14FBB11

14" AWWA C504 - STYLE 4500 - CL150  
BFV w/ F/A16 MSS/ISO CONNECTION  
SUB-ASSEMBLY - MATERIAL LIST  
FLANGED ENDS



1. FLOW MAY BE IN EITHER DIRECTION
2. VALVE SHAFT WILL MEET OR EXCEED AWWA C504 STANDARDS
3. 48 TURNS TO CLOSE
4. 16 BOLTS ON EACH FLANGE
5. 1" DIA. OF BOLTS
6. OPERATED BY 2" AWWA OPERATING NUT/WRENCH NUT
7. RATED AND TESTED FOR 150psi WORKING PRESSURE
8. WEIGHT OF VALVE IS 450 LBS.

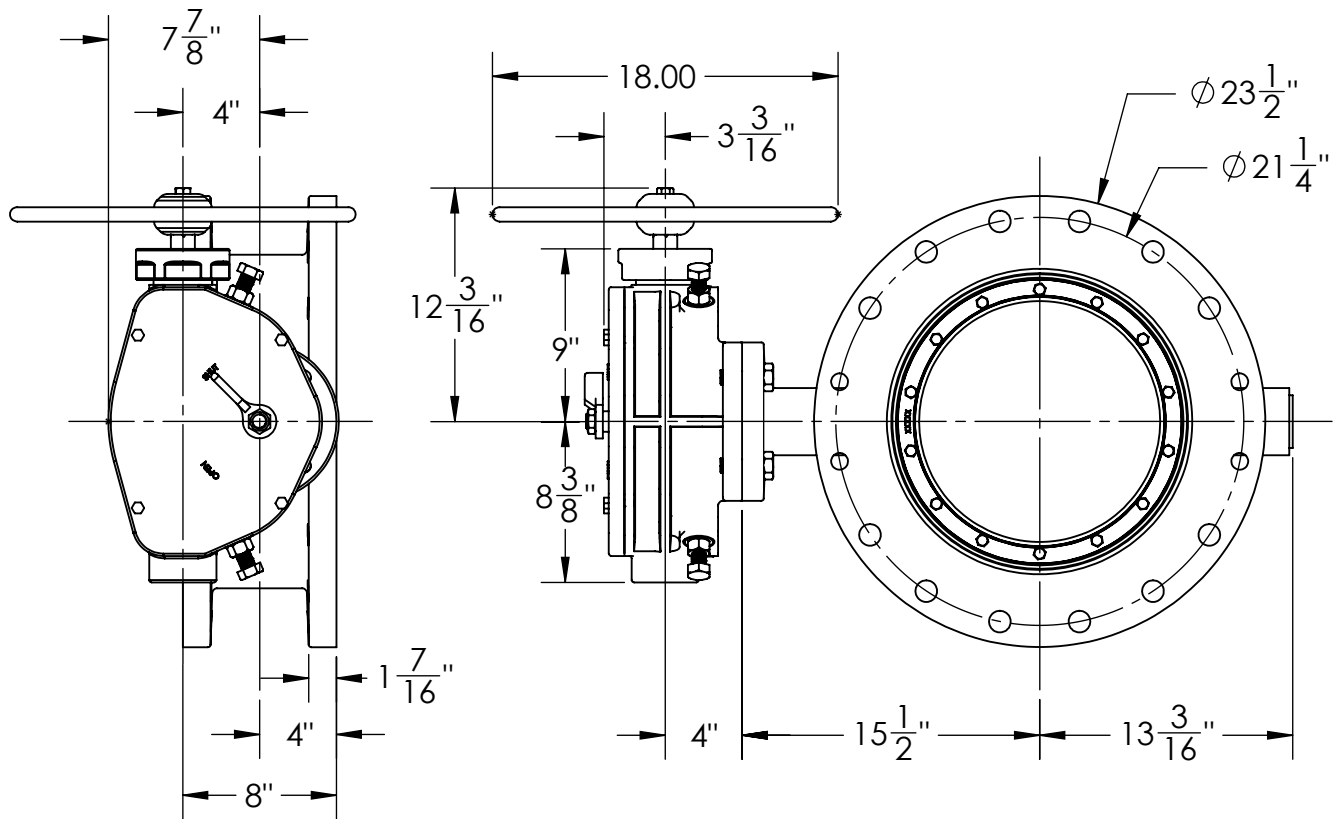
THIS DWG. AND ALL INFORMATION IS OUR PROPERTY AND SHALL NOT BE USED, COPIED, OR REPRODUCED WITHOUT WRITTEN CONSENT. DESIGN AND INVENTION RIGHTS RESERVED.



**KENNEDY VALVE**  
Division of McWane, Inc.  
1021 EAST WATER STREET ELMIRA, NEW YORK 14901

**DRAWN:** CTJ  
**DATE:** 11/26/2018  
**DWG. NO.** B16FAM11

16" - Style 4500 - CL150  
BFV with F/A16 MSS/ISO Connection-  
FE x FE ENDS - Buried Operator



1. FLOW MAY BE IN EITHER DIRECTION
2. VALVE SHAFT WILL MEET OR EXCEED AWWA C504 STANDARDS
3. 48 TURNS TO CLOSE
4. 16 BOLTS ON EACH FLANGE
5. 1" DIA. OF BOLTS
6. OPERATED BY 2" AWWA OPERATING NUT/WRENCH NUT
7. RATED AND TESTED FOR 150psi WORKING PRESSURE
8. WEIGHT OF VALVE IS 450 LBS.

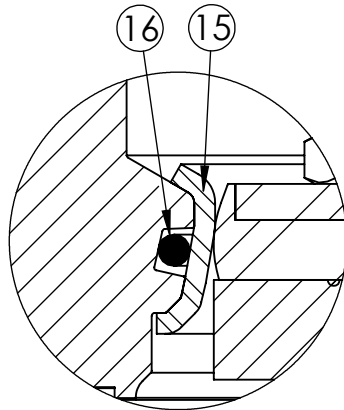
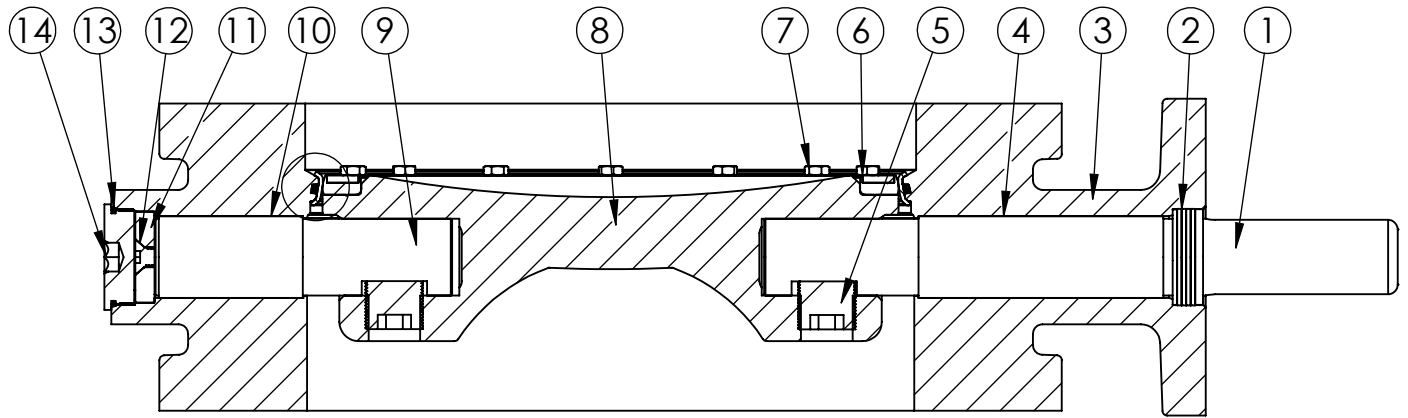
THIS DWG. AND ALL INFORMATION IS OUR PROPERTY AND SHALL NOT BE USED, COPIED, OR REPRODUCED WITHOUT WRITTEN CONSENT. DESIGN AND INVENTION RIGHTS RESERVED.



**KENNEDY VALVE**  
Division of McWane, Inc.  
1021 EAST WATER STREET ELMIRA, NEW YORK 14901

**DRAWN:** CTJ  
**DATE:** 2/8/2019  
**DWG. NO.**  
B16FAM1101

16" - Style 4500 - CL150  
BFV with F/A16 MSS/ISO Connection-  
FE x FE ENDS - Handwheel Operator



**SEAT DETAIL**

<b>ITEM NO.</b>	<b>DESCRIPTION</b>	<b>MATERIAL</b>
1	OPERATOR SHAFT	304 STAINLESS STEEL, ASTM A-276
2	V-RING PACKING SET	EPDM, BUNA-N
3	BFV BODY	DUCTILE IRON ASTM A-536
4	UPPER JOURNAL BEARING	FIBER & REINFORCED TEFLON
5	TORQUE PLUG	304 STAINLESS STEEL, ASTM A-276
6	VANE SEAT RING	EPT W/ STAINLESS STEEL INSERT
7	HEX HEAD CAP SCREW	18-8 STAINLESS STEEL W/ NYLOC PATCH
8	BFV VANE	DUCTILE IRON ASTM A-276
9	THRUST SHAFT	304 STAINLESS STEEL, ASTM A-276
10	LOWER JOURNAL BEARING	FIBER & REINFORCED TEFLON
11	THRUST BEARING	BRONZE ALLOY
12	THRUST BEARING CAP SCREW	18-8 STAINLESS STEEL
13	BODY END PLUG O-RING	BUNA-N
14	BODY END PLUG	STEEL
15	BODY SEAT RING	316 STAINLESS STEEL
16	BODY SEAT O-RING	BUNA-N

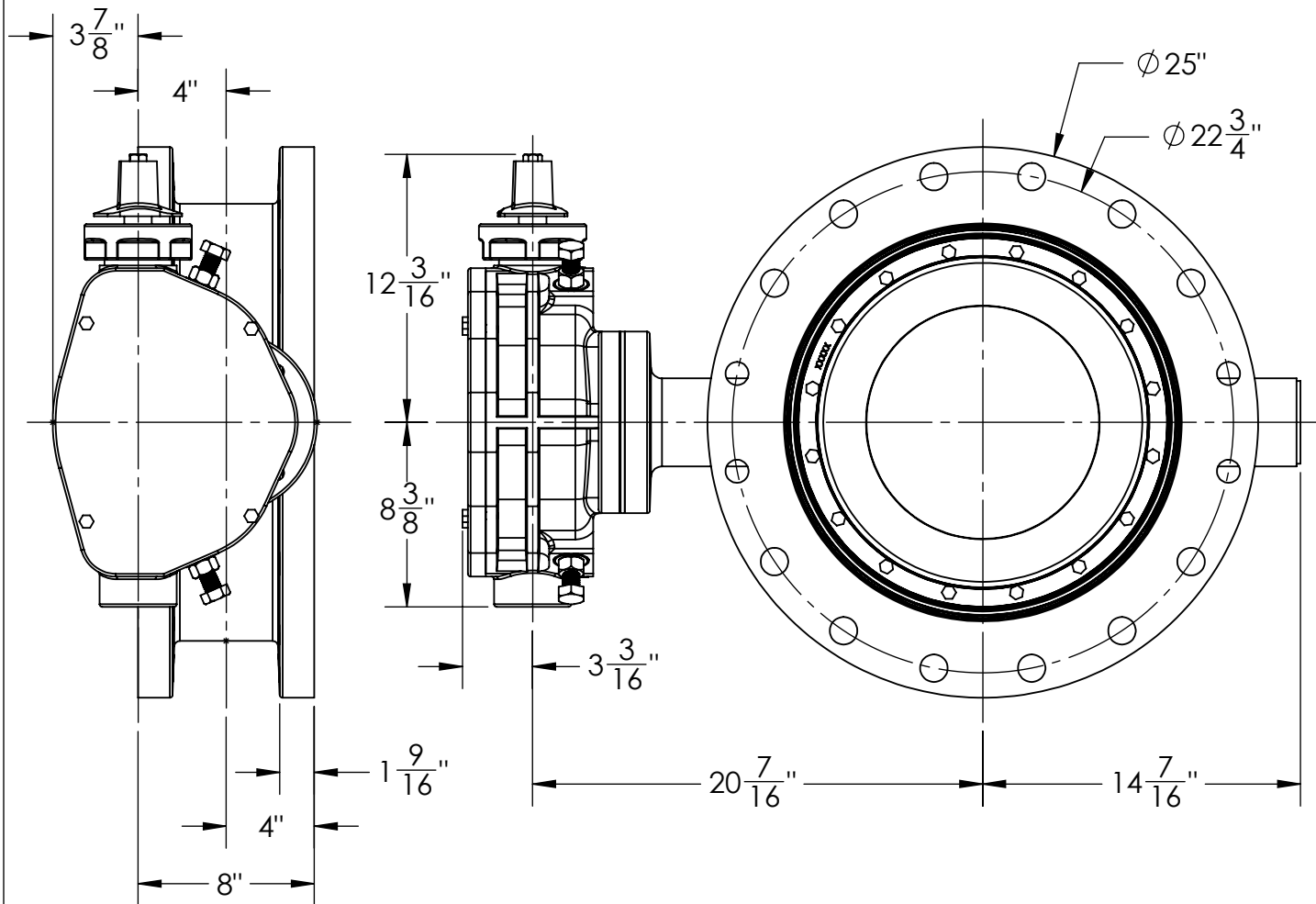
THIS DWG. AND ALL INFORMATION IS OUR PROPERTY AND SHALL NOT BE USED, COPIED, OR REPRODUCED WITHOUT WRITTEN CONSENT. DESIGN AND INVENTION RIGHTS RESERVED.



**KENNEDY VALVE**  
 Division of McWane, Inc.  
 1021 EAST WATER STREET ELMIRA, NEW YORK 14901

**DRAWN:** ZF  
**DATE:** 9/19/2018  
**DWG. NO.** B16FBB11

16" AWWA C504 - STYLE 4500 - CL150  
 BFV w/ F/A16 MSS/ISO CONNECTION  
 SUB-ASSEMBLY - MATERIAL LIST  
 FLANGED ENDS



1. FLOW MAY BE IN EITHER DIRECTION
2. VALVE SHAFT WILL MEET OR EXCEED AWWA C504 STANDARDS
3. 48 TURNS TO CLOSE
4. 16 BOLTS ON EACH FLANGE
5. 1 1/8" DIA. OF BOLTS
6. OPERATED BY 2" AWWA OPERATING NUT/WRENCH NUT
7. RATED AND TESTED FOR 150psi WORKING PRESSURE
9. WEIGHT OF VALVE IS 450 LBS.

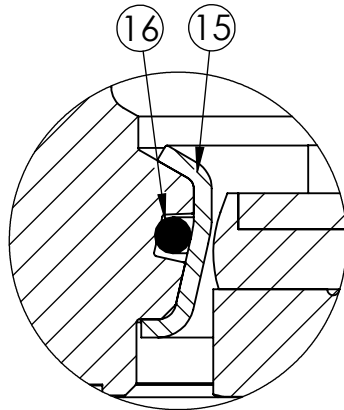
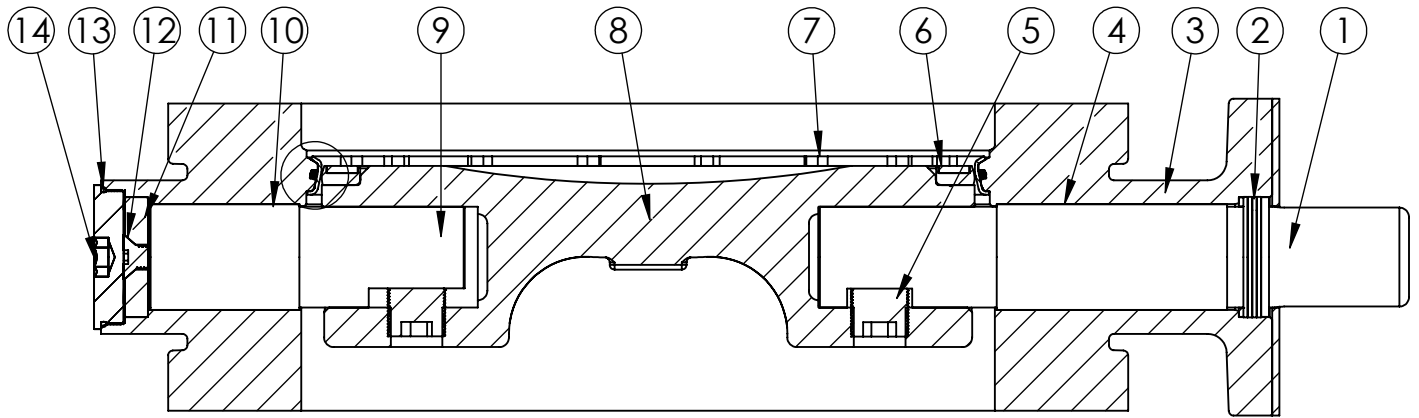
THIS DWG. AND ALL INFORMATION IS OUR PROPERTY AND SHALL NOT BE USED, COPIED, OR REPRODUCED WITHOUT WRITTEN CONSENT. DESIGN AND INVENTION RIGHTS RESERVED.



**KENNEDY VALVE**  
Division of McWane, Inc.  
1021 EAST WATER STREET ELMIRA, NEW YORK 14901

**DRAWN:** CTJ  
**DATE:** 11/26/2018  
**DWG. NO.** B18FAM11

18" - Style 4500 - CL150  
BFV with F/A16 MSS/ISO Connection-  
FE x FE ENDS - Buried Operator



**SEAT DETAIL**

<b>ITEM NO.</b>	<b>DESCRIPTION</b>	<b>MATERIAL</b>
1	OPERATOR SHAFT	304 STAINLESS STEEL, ASTM A-276
2	V-RING PACKING SET	EPDM, BUNA-N
3	BFV BODY	DUCTILE IRON ASTM A-536
4	UPPER JOURNAL BEARING	FIBER & REINFORCED TEFLON
5	TORQUE PLUG	304 STAINLESS STEEL, ASTM A-276
6	VANE SEAT RING	EPT W/ STAINLESS STEEL INSERT
7	HEX HEAD CAP SCREW	18-8 STAINLESS STEEL W/ NYLOC PATCH
8	BFV VANE	DUCTILE IRON ASTM A-276
9	THRUST SHAFT	304 STAINLESS STEEL, ASTM A-276
10	LOWER JOURNAL BEARING	FIBER & REINFORCED TEFLON
11	THRUST BEARING	BRONZE ALLOY
12	THRUST BEARING CAP SCREW	18-8 STAINLESS STEEL
13	BODY END PLUG O-RING	BUNA-N
14	BODY END PLUG	STEEL
15	BODY SEAT RING	316 STAINLESS STEEL
16	BODY SEAT O-RING	BUNA-N

THIS DWG. AND ALL INFORMATION IS OUR PROPERTY AND SHALL NOT BE USED, COPIED, OR REPRODUCED WITHOUT WRITTEN CONSENT. DESIGN AND INVENTION RIGHTS RESERVED.

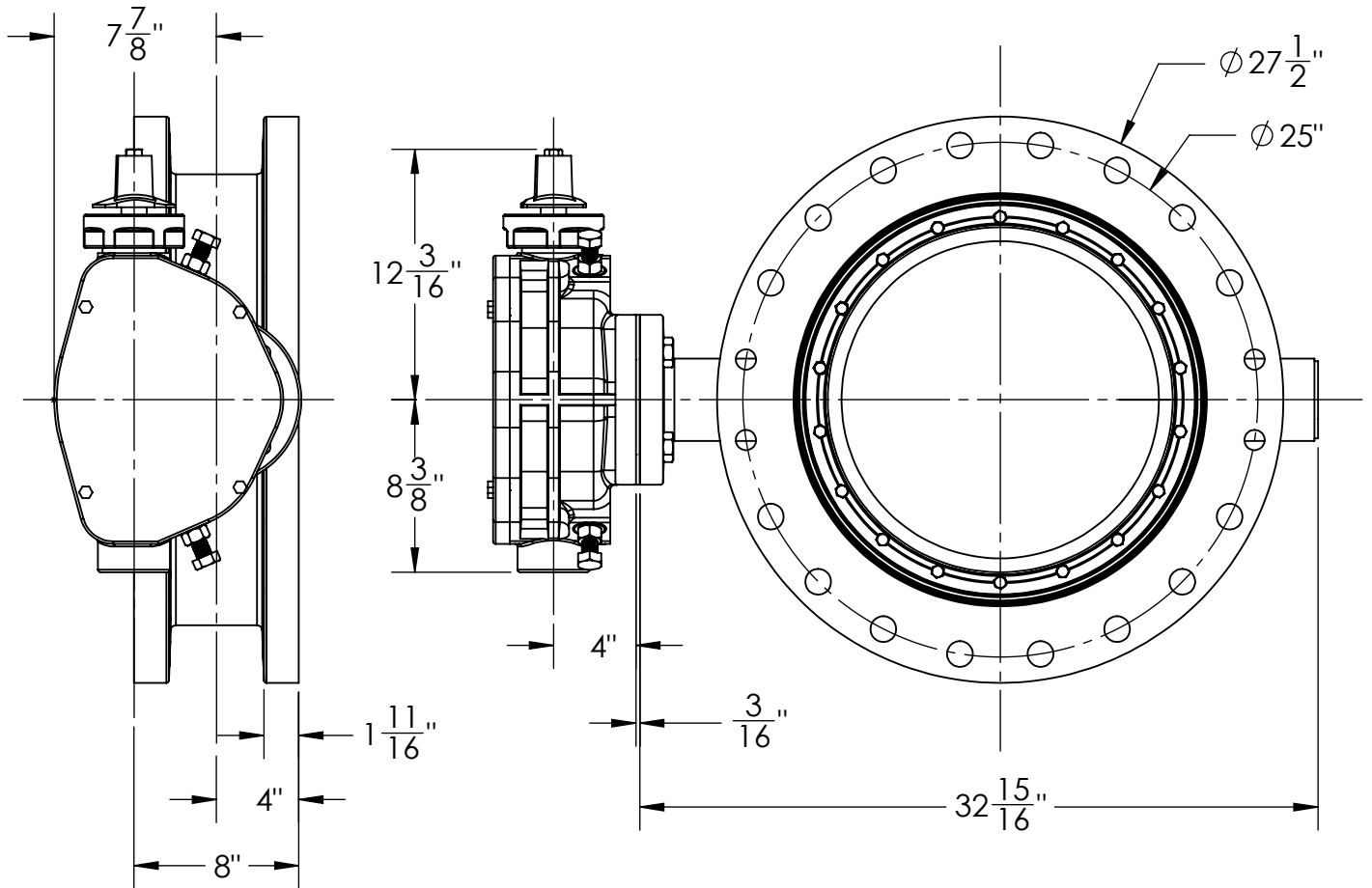


**KENNEDY VALVE**  
Division of McWane, Inc.  
1021 EAST WATER STREET ELMIRA, NEW YORK 14901

**DRAWN:** CTJ  
**DATE:** 10/4/2018  
**DWG. NO.**  
B18FBB11

18" AWWA C504 - STYLE 4500 - CL150  
BFV w/ F/A16 MSS/ISO CONNECTION  
SUB-ASSEMBLY - MATERIAL LIST  
FLANGED ENDS





1. FLOW MAY BE IN EITHER DIRECTION
2. VALVE SHAFT WILL MEET OR EXCEED AWWA C504 REQUIREMENTS
3. NUMBER OF TURNS TO CLOSE: 48
4. OPERATED BY 2" AWWA OPERATING NUT/WRENCH NUT
5. (20) 1 1/8"-7 BOLTS FOR EACH FLANGE
6. RATED AND TESTED FOR 150psi WORKING PRESSURE
7. VALVE WEIGHT IS 625 LBS.

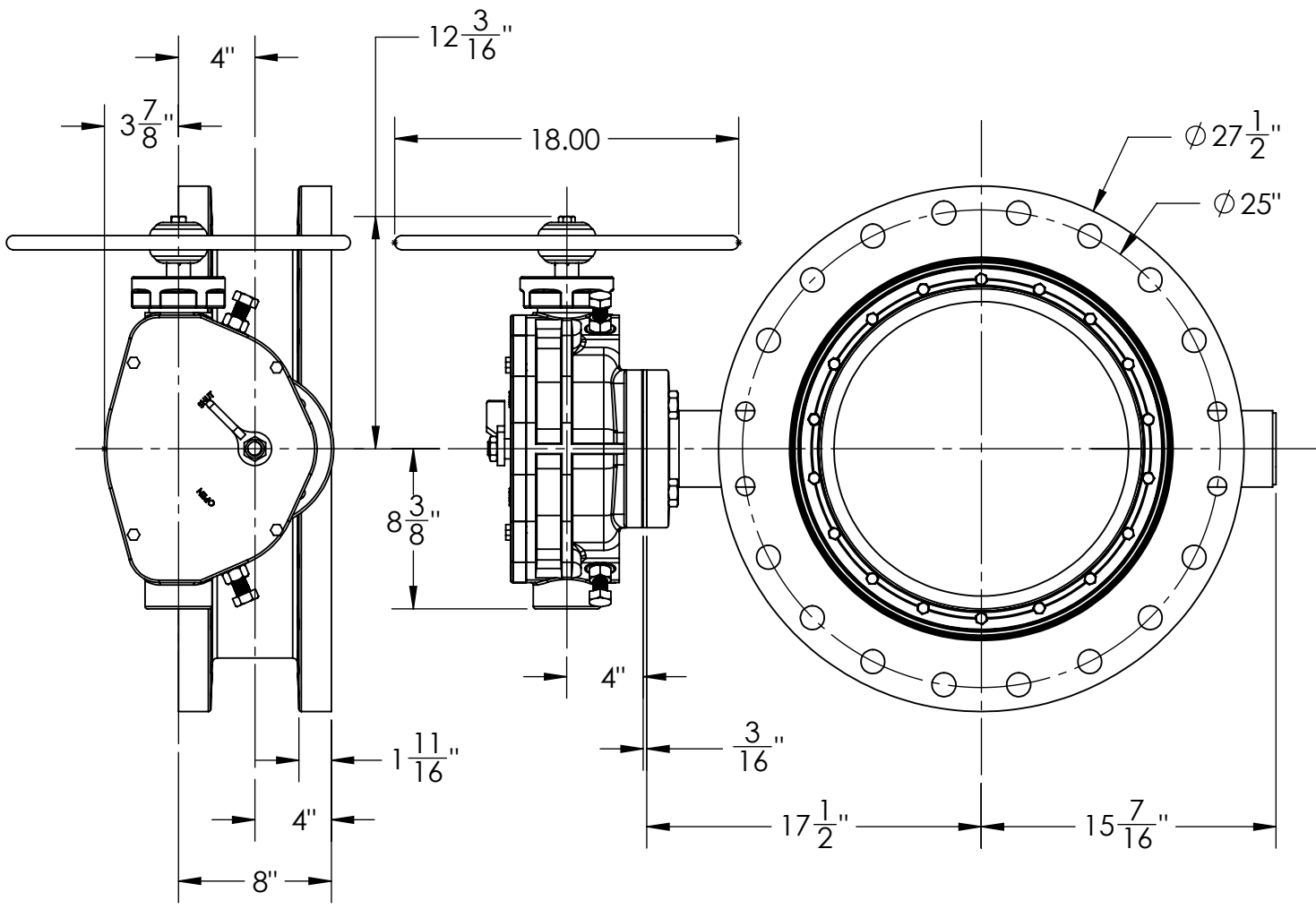
THIS DWG. AND ALL INFORMATION IS OUR PROPERTY AND SHALL NOT BE USED, COPIED, OR REPRODUCED WITHOUT WRITTEN CONSENT. DESIGN AND INVENTION RIGHTS RESERVED.



**KENNEDY VALVE**  
Division of McWane, Inc.  
1021 EAST WATER STREET ELMIRA, NEW YORK 14901

**DRAWN:** CTJ  
**DATE:** 11/26/2018  
**DWG. NO.** B20FAM11

**20" AWWA C504 - STYLE 4500 - CL150  
BFV w/ 1250 F/A16 MSS/ISO CONNECTION  
SUB-ASSEMBLY - DIMENSIONS  
FLANGED END**



1. FLOW MAY BE IN EITHER DIRECTION
2. VALVE SHAFT WILL MEET OR EXCEED AWWA C504 REQUIREMENTS
3. NUMBER OF TURNS TO CLOSE: 48
4. OPERATED BY 2" AWWA OPERATING NUT/WRENCH NUT
5. (20) 1 1/8"-7 BOLTS FOR EACH FLANGE
6. RATED AND TESTED FOR 150psi WORKING PRESSURE
7. VALVE WEIGHT IS 625 LBS.

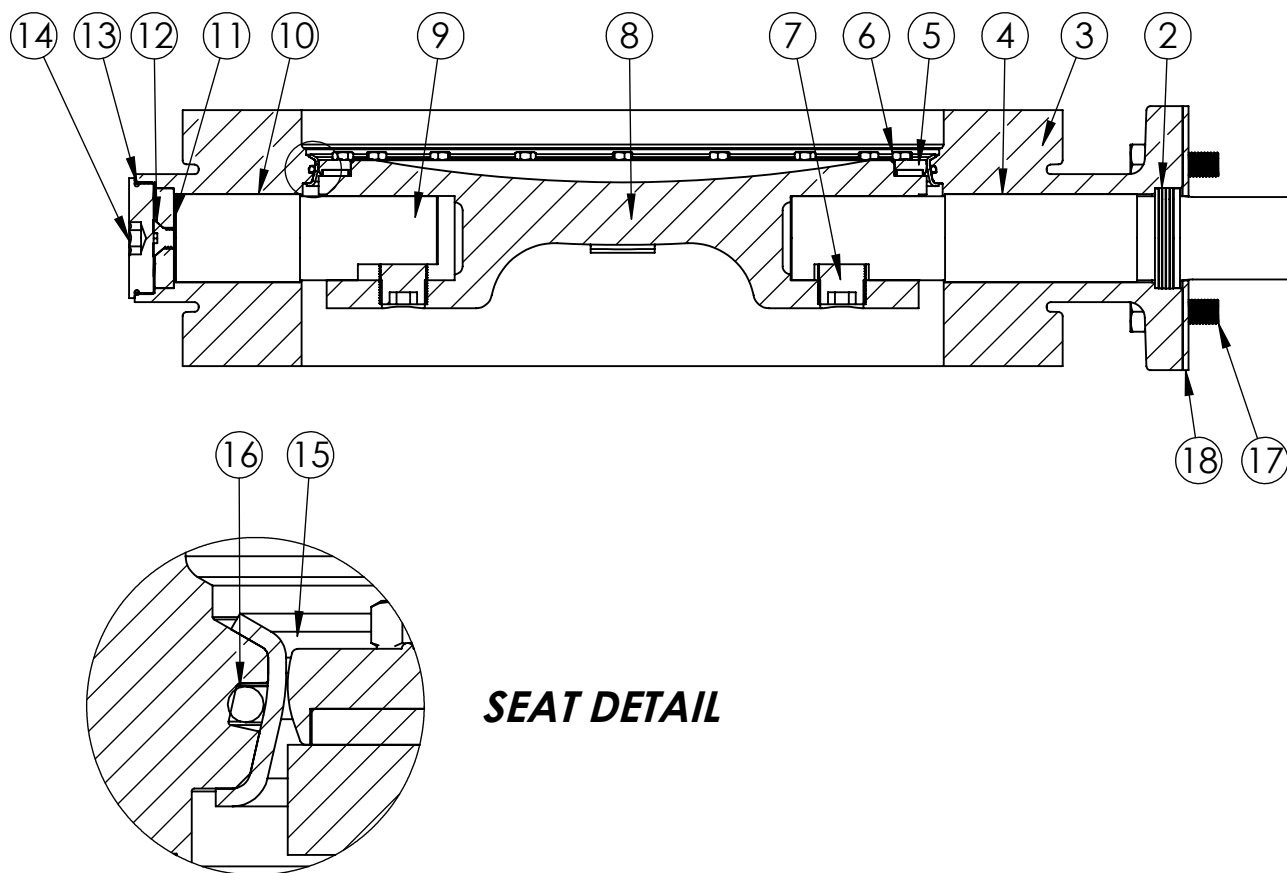
THIS DWG. AND ALL INFORMATION IS OUR PROPERTY AND SHALL NOT BE USED, COPIED, OR REPRODUCED WITHOUT WRITTEN CONSENT. DESIGN AND INVENTION RIGHTS RESERVED.



**KENNEDY VALVE**  
 Division of McWane, Inc.  
 1021 EAST WATER STREET ELMIRA, NEW YORK 14901

**DRAWN:** CTJ  
**DATE:** 2/8/2019  
**DWG. NO.**  
 B20FAM1101

**20" AWWA C504 - STYLE 4500 - CL150  
 BFV w/ 1250 HANDWHEEL OPERATOR  
 F/A16 MSS/ISO CONNECTION  
 SUB-ASSEMBLY - DIMENSIONS  
 FLANGED END**



**SEAT DETAIL**

<b>ITEM NO.</b>	<b>DESCRIPTION</b>	<b>MATERIAL</b>
1	OPERATOR SHAFT	304 STAINLESS STEEL, ASTM A-276
2	V-RING PACKING SET	EPDM, BUNA-N
3	BFV BODY	DUCTILE IRON ASTM A-536
4	UPPER JOURNAL BEARING	FIBER & REINFORCED TEFLON
5	VANE SEAT RING	EPT W/ STAINLESS STEEL INSERT
6	HEX HEAD CAP SCREW	18-8 STAINLESS STEEL W/ NYLOC PATCH
7	TORQUE PLUG	304 STAINLESS STEEL, ASTM A-276
8	BFV VANE	DUCTILE IRON ASTM A-536
9	THRUST SHAFT	304 STAINLESS STEEL, ASTM A-276
10	LOWER JOURNAL BEARING	FIBER & REINFORCED TEFLON
11	THRUST BEARING	BRONZE ALLOY
12	THRUST BEARING CAP SCREW	18-8 STAINLESS STEEL
13	BODY END PLUG O-RING	BUNA-N
14	BODY END PLUG	STEEL
15	BODY SEAT RING	316 STAINLESS STEEL
16	BODY SEAT O-RING	BUNA-N
17	OPERATOR MOUNTING BOLTS	18-8 STAINLESS STEEL
18	ISO FA16 SEAL PLATE	COMMERCIAL STEEL

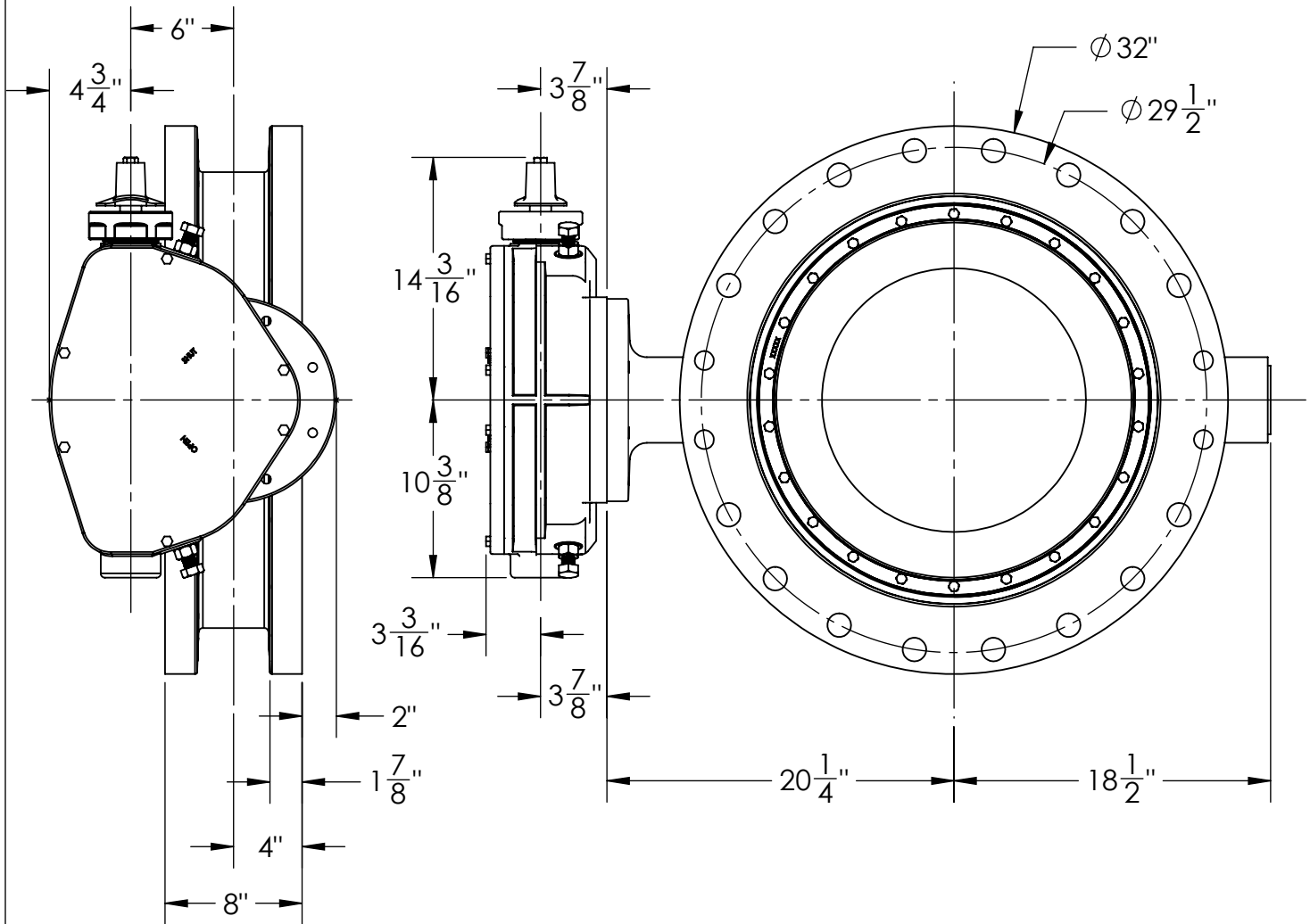
THIS DWG. AND ALL INFORMATION IS OUR PROPERTY AND SHALL NOT BE USED, COPIED, OR REPRODUCED WITHOUT WRITTEN CONSENT. DESIGN AND INVENTION RIGHTS RESERVED.



**KENNEDY VALVE**  
Division of McWane, Inc.  
1021 EAST WATER STREET ELMIRA, NEW YORK 14901

**DRAWN:** ZF  
**DATE:** 8/31/2018  
**DWG. NO.** B20FBB11

20" AWWA C504 - STYLE 4500 - CL150  
BFV w/ F/A16 MSS/ISO CONNECTION  
SUB-ASSEMBLY - MATERIAL LIST  
FLANGED ENDS



1. FLOW MAY BE IN EITHER DIRECTION
2. VALVE SHAFT WILL MEET OR EXCEED AWWA C504 REQUIREMENTS
3. 72 TURNS TO CLOSE
4. OPERATED BY 2" AWWA OPERATING NUT / WRENCH NUT
5. (20) 1 1/4"-7 BOLTS ON EACH FLANGE, 4 THREADED
6. RATED AND TESTED FOR 150psi WORKING PRESSURE
7. VALVE WEIGHT IS 800 LBS.

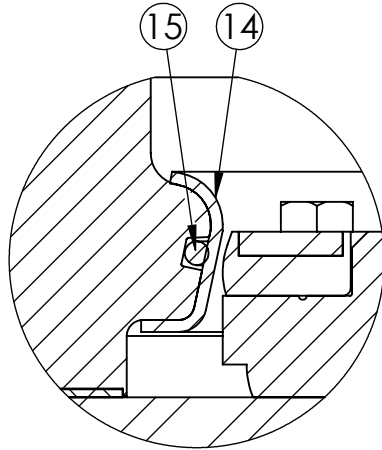
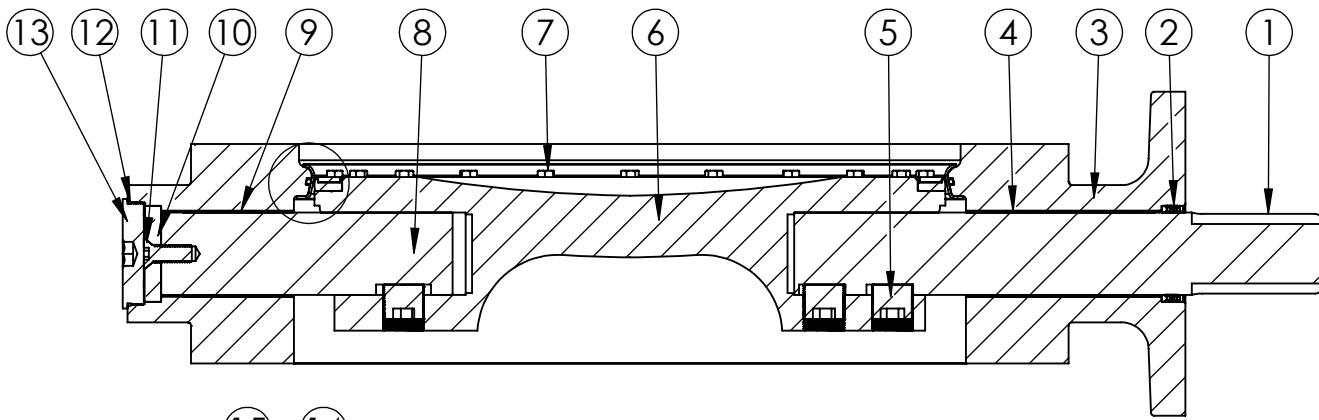
THIS DWG. AND ALL INFORMATION IS OUR PROPERTY AND SHALL NOT BE USED, COPIED, OR REPRODUCED WITHOUT WRITTEN CONSENT. DESIGN AND INVENTION RIGHTS RESERVED.



**KENNEDY VALVE**  
Division of McWane, Inc.  
1021 EAST WATER STREET ELMIRA, NEW YORK 14901

**DRAWN:** CTJ  
**DATE:** 11/26/2018  
**DWG. NO.** B24FAM11

24" AWWA C504 - STYLE 4500 - CL150  
BFV w/ F/A25 MSS/ISO CONNECTION  
SUB-ASSEMBLY - DIMENSIONS  
FLANGED END



**SEAT DETAIL**

<b>ITEM NO.</b>	<b>DESCRIPTION</b>	<b>MATERIAL</b>
1	OPERATOR SHAFT	304 STAINLESS STEEL, ASTM A-276
2	V-RING PACKING SET	EPDM, BUNA-N
3	BFV BODY	DUCTILE IRON ASTM A-536
4	UPPER JOURNAL BEARING	FIBER & REINFORCED TEFLON
5	TORQUE PLUG	304 STAINLESS STEEL, ASTM A-276
6	VANE SEAT RING	EPT W/ STAINLESS STEEL INSERT
7	HEX HEAD CAP SCREW	18-8 STAINLESS STEEL W/ NYLOC PATCH
8	THRUST SHAFT	304 STAINLESS STEEL, ASTM A-276
9	LOWER JOURNAL BEARING	FIBER & REINFORCED TEFLON
10	THRUST BEARING	BRONZE ALLOY
11	THRUST BEARING CAP SCREW	18-8 STAINLESS STEEL
12	BODY END PLUG	STEEL
13	BODY END PLUG O-RING	EPDM
14	BODY SEAT RING	316 STAINLESS STEEL
15	BODY SEAT O-RING	BUNA-N

THIS DWG. AND ALL INFORMATION IS OUR PROPERTY AND SHALL NOT BE USED, COPIED, OR REPRODUCED WITHOUT WRITTEN CONSENT. DESIGN AND INVENTION RIGHTS RESERVED.



**KENNEDY VALVE**  
 Division of McWane, Inc.  
 1021 EAST WATER STREET ELMIRA, NEW YORK 14901

**DRAWN:** ZF  
**DATE:** 8/13/2018  
**DWG. NO.** B24FBB11

24" AWWA C504 - STYLE 4500 - CL150  
 BFV w/ F/A25 MSS/ISO CONNECTION  
 SUB-ASSEMBLY - MATERIAL LIST  
 FLANGED ENDS