

1. FLOW MAY BE IN EITHER DIRECTION
2. VALVE SHAFT WILL MEET OR EXCEED AWWA C504 REQUIREMENTS
3. REFERENCE AWWA C504 FOR FLANGES AND DRILLING (ANSI 125)
4. 29 TURNS TO CLOSE
5. 4 BOLTS ON EACH FLANGE
6. 3/4" DIAMETER OF BOLTS
7. OPERATED BY 2" AWWA OPERATING NUT/WRENCH NUT
8. RATED AND TESTED FOR 150psi WORKING PRESSURE

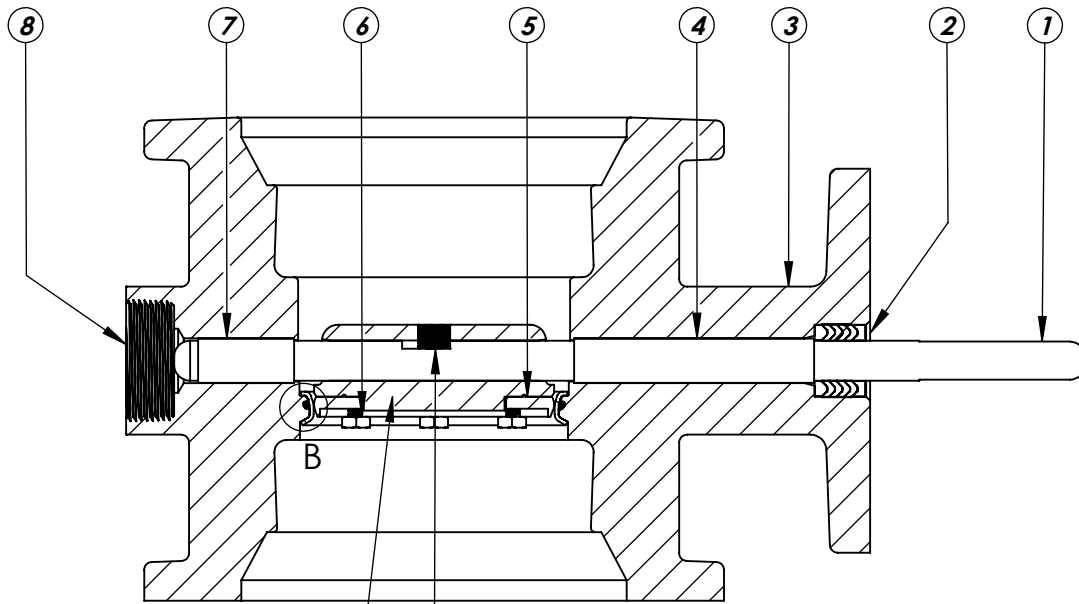
THIS DWG. AND ALL INFORMATION IS OUR PROPERTY AND SHALL NOT BE USED, COPIED, OR REPRODUCED WITHOUT WRITTEN CONSENT. DESIGN AND INVENTION RIGHTS RESERVED.



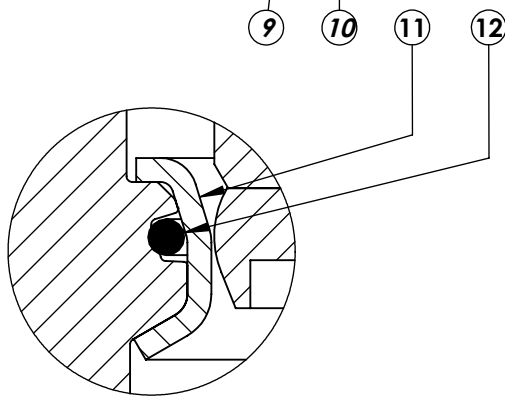
KENNEDY VALVE
 Division of McWane, Inc.
 1021 EAST WATER STREET ELMIRA, NEW YORK 14901

DRAWN: CTJ
DATE: 1/23/2019
DWG. NO. B04MAM1100

4" - Style 4500 - CL150
BFV with F/A 12 MSS/ISO Connection-
MJ ENDS - Buried Operator



SECTION A-A
SCALE 1 : 3



DETAIL B
SCALE 2 : 1

ITEM NO.	DESCRIPTION	MATERIAL
1	VANE SHAFT	304 STAINLESS STEEL, ASTM A-276
2	V-RING PACKING SET	EPDM, BUNA-N
3	BFV BODY	DUCTILE IRON ASTM A-536
4	UPPER JOURNAL BEARING	NYLATRON
5	VANE SEAT RING	EPT with SS INSERT
6	HEX HEAD CAPSCREW	18-8 STAINLESS STEEL with NYLOC PATCH
7	LOWER JOURNAL BEARING	NYLATRON
8	BFV BODY END PLUG	STEEL
9	BFV VANE	DUCTILE IRON ASTM A-536
10	VANE SHAFT TORQUE PLUG	18-8 STAINLESS STEEL
11	BODY SEAT RING	316 STAINLESS STEEL
12	BODY SEAT O-RING	BUNA-N

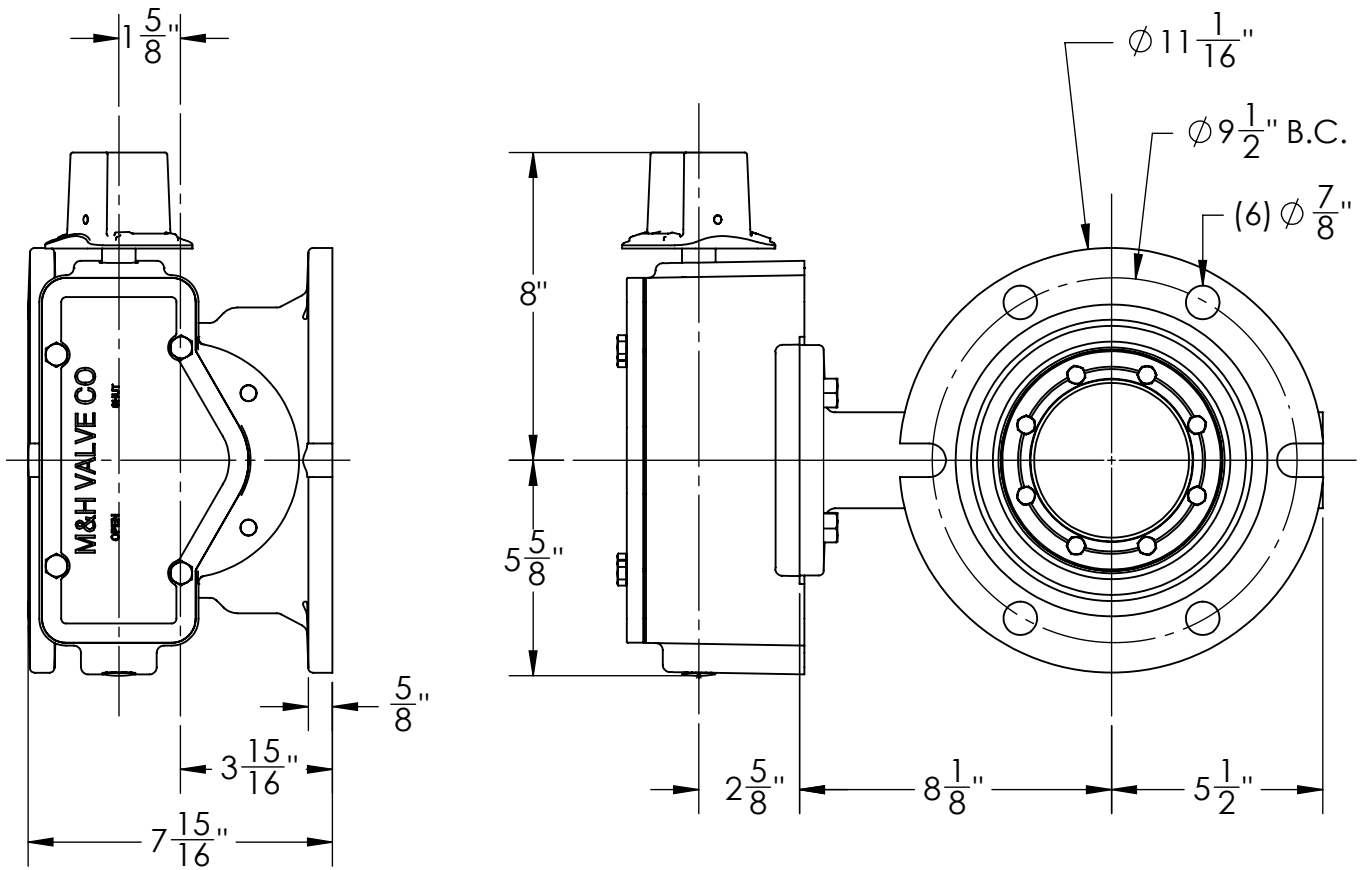
THIS DWG. AND ALL INFORMATION IS OUR PROPERTY AND SHALL NOT BE USED, COPIED, OR REPRODUCED WITHOUT WRITTEN CONSENT. DESIGN AND INVENTION RIGHTS RESERVED.



KENNEDY VALVE
Division of McWane, Inc.
1021 EAST WATER STREET ELMIRA, NEW YORK 14901

DRAWN: ZF
DATE: 1/4/17
DWG. NO. B04MBB11

**4" AWWA C504 - Style 4500 - CL150
BFV with F/A 12 MSS/ISO Connection
Sub-Assembly - Material List
MECHANICAL JOINT END**



1. FLOW MAY BE IN EITHER DIRECTION
2. VALVE SHAFT WILL MEET OR EXCEED AWWA C504 REQUIREMENTS
3. REFERENCE AWWA C504 FOR FLANGES AND DRILLING (ANSI 125)
4. 29 NUMBER OF TURNS TO CLOSE
5. 6 BOLTS ON EACH FLANGE
6. 3/4" DIAMETER OF BOLTS
7. OPERATED BY 2" AWWA OPERATING NUT/WRENCH NUT
8. RATED AND TESTED FOR 150psi WORKING PRESSURE

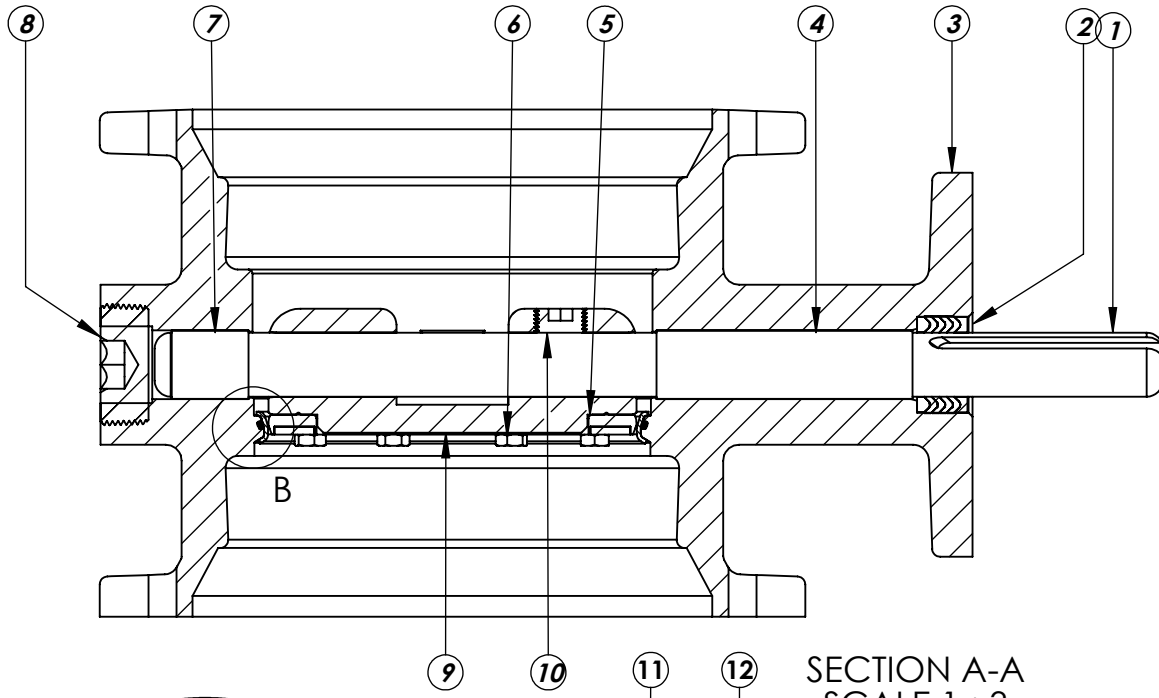
THIS DWG. AND ALL INFORMATION IS OUR PROPERTY AND SHALL NOT BE USED, COPIED, OR REPRODUCED WITHOUT WRITTEN CONSENT. DESIGN AND INVENTION RIGHTS RESERVED.



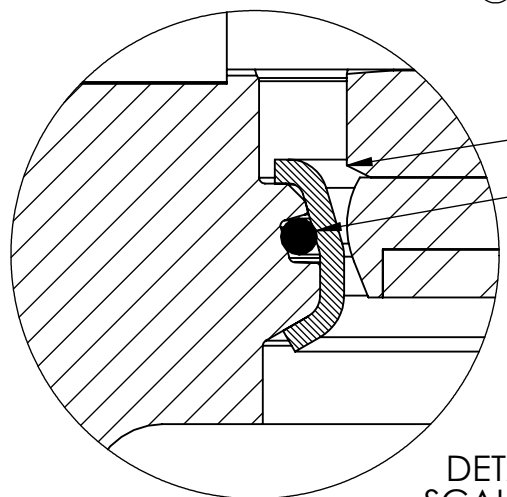
KENNEDY VALVE
Division of McWane, Inc.
1021 EAST WATER STREET ELMIRA, NEW YORK 14901

DRAWN: CTJ
DATE: 11/26/2018
DWG. NO. B06MAM11

6" - Style 4500 - CL150
BFV with F/A 12 MSS/ISO Connection-
MJ ENDS - Buried Operator



SECTION A-A
SCALE 1 : 3



DETAIL B
SCALE 2 : 1

ITEM NO.	DESCRIPTION	MATERIAL
1	VANE SHAFT	304 STAINLESS STEEL, ASTM A-276
2	V-RING PACKING SET	EPDM, BUNA-N
3	BFV BODY	DUCTILE IRON ASTM A-536
4	UPPER JOURNAL BEARING	NYLATRON
5	VANE SEAT RING	EPT with SS INSERT
6	HEX HEAD CAPSCREW	18-8 STAINLESS STEEL with NYLOC PATCH
7	LOWER JOURNAL BEARING	NYLATRON
8	BFV BODY END PLUG	STEEL
9	BFV VANE	DUCTILE IRON ASTM A-536
10	VANE SHAFT TORQUE PLUG	18-8 STAINLESS STEEL
11	BODY SEAT RING	316 STAINLESS STEEL
12	BODY SEAT O-RING	BUNA-N

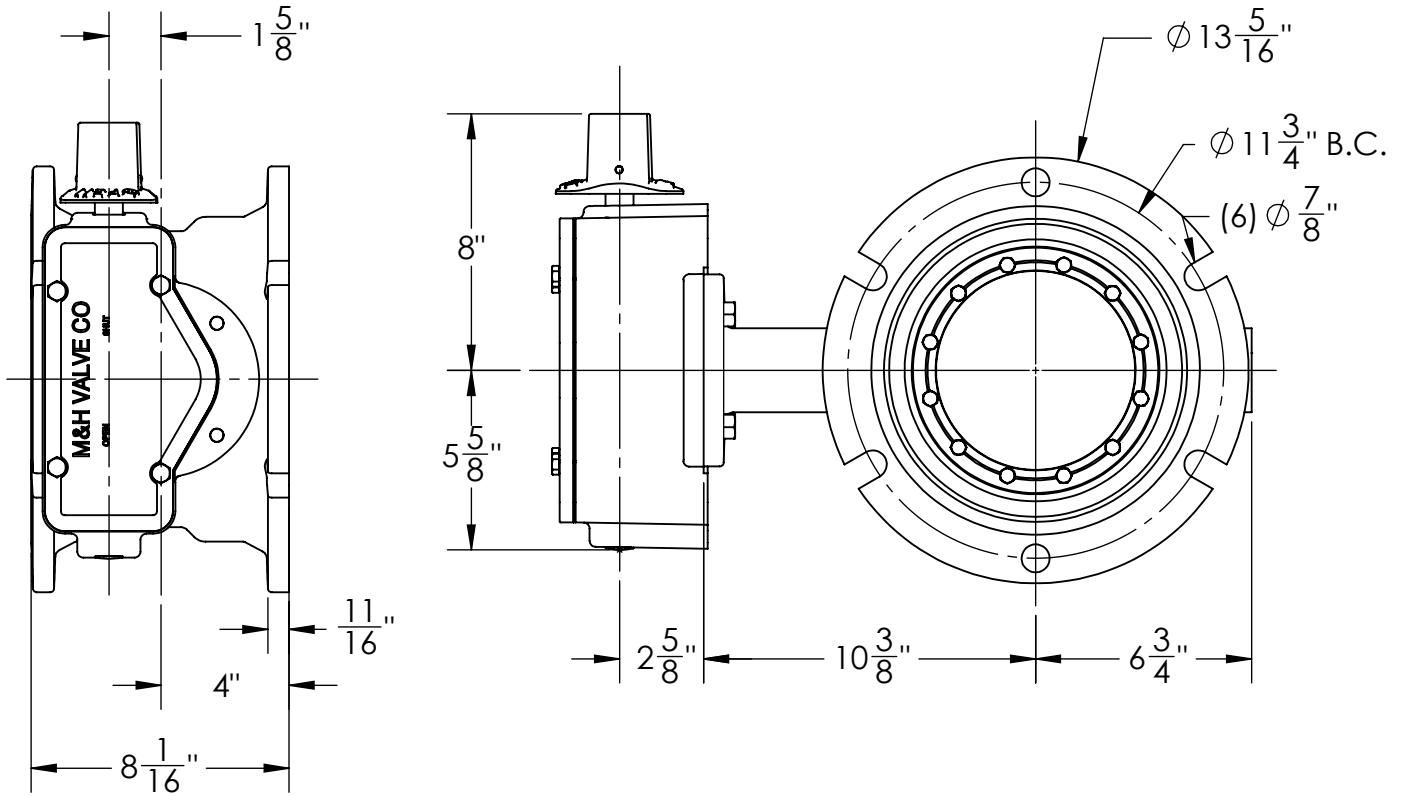
THIS DWG. AND ALL INFORMATION IS OUR PROPERTY AND SHALL NOT BE USED, COPIED, OR REPRODUCED WITHOUT WRITTEN CONSENT. DESIGN AND INVENTION RIGHTS RESERVED.



KENNEDY VALVE
Division of McWane, Inc.
1021 EAST WATER STREET ELMIRA, NEW YORK 14901

DRAWN: CTJ
DATE: 11/27/2018
DWG. NO. B06MBB11

**6" AWWA C504 - Style 4500 - CL150
BFV with F/A 12 MSS/ISO Connection
Sub-Assembly - Material List
MJ ENDS**



1. FLOW MAY BE IN EITHER DIRECTION
2. VALVE SHAFT WILL MEET OR EXCEED AWWA C504 REQUIREMENTS
3. REFERENCE AWWA C504 FOR FLANGES AND DRILLING (ANSI 125)
4. 29 TURNS TO CLOSE
5. 6 BOLTS ON EACH FLANGE
6. 3/4" DIAMETER OF BOLTS
7. OPERATED BY 2" AWWA OPERATING NUT/WRENCH NUT
8. RATED AND TESTED FOR 150psi WORKING PRESSURE

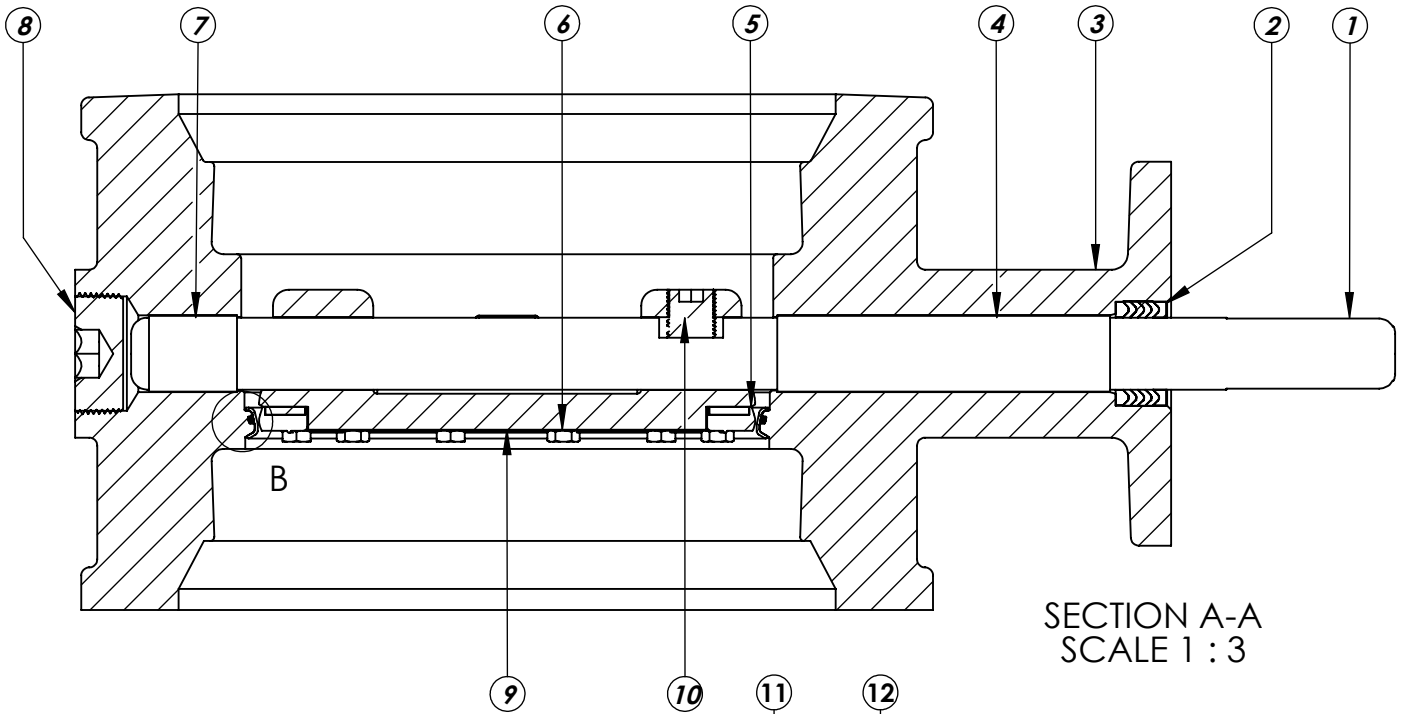
THIS DWG. AND ALL INFORMATION IS OUR PROPERTY AND SHALL NOT BE USED, COPIED, OR REPRODUCED WITHOUT WRITTEN CONSENT. DESIGN AND INVENTION RIGHTS RESERVED.



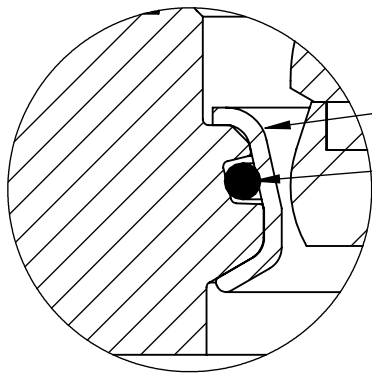
KENNEDY VALVE
 Division of McWane, Inc.
 1021 EAST WATER STREET ELMIRA, NEW YORK 14901

DRAWN: CTJ
DATE: 11/27/2018
DWG. NO.: B08MAM11

8" - Style 4500 - CL150
BFV with F/A 12 MSS/ISO Connection-
MJ ENDS - Buried Operator



SECTION A-A
SCALE 1 : 3



DETAIL B
SCALE 2 : 1

ITEM NO.	DESCRIPTION	MATERIAL
1	VANE SHAFT	304 STAINLESS STEEL, ASTM A-276
2	V-RING PACKING SET	EPDM, BUNA-N
3	BFV BODY	DUCTILE IRON ASTM A-536
4	UPPER JOURNAL BEARING	NYLATRON
5	VANE SEAT RING	EPT with SS INSERT
6	HEX HEAD CAPSCREW	18-8 STAINLESS STEEL with NYLOC PATCH
7	LOWER JOURNAL BEARING	NYLATRON
8	BFV BODY END PLUG	STEEL
9	BFV VANE	DUCTILE IRON ASTM A-536
10	VANE SHAFT TORQUE PLUG	18-8 STAINLESS STEEL
11	BODY SEAT RING	316 STAINLESS STEEL
12	BODY SEAT O-RING	BUNA-N

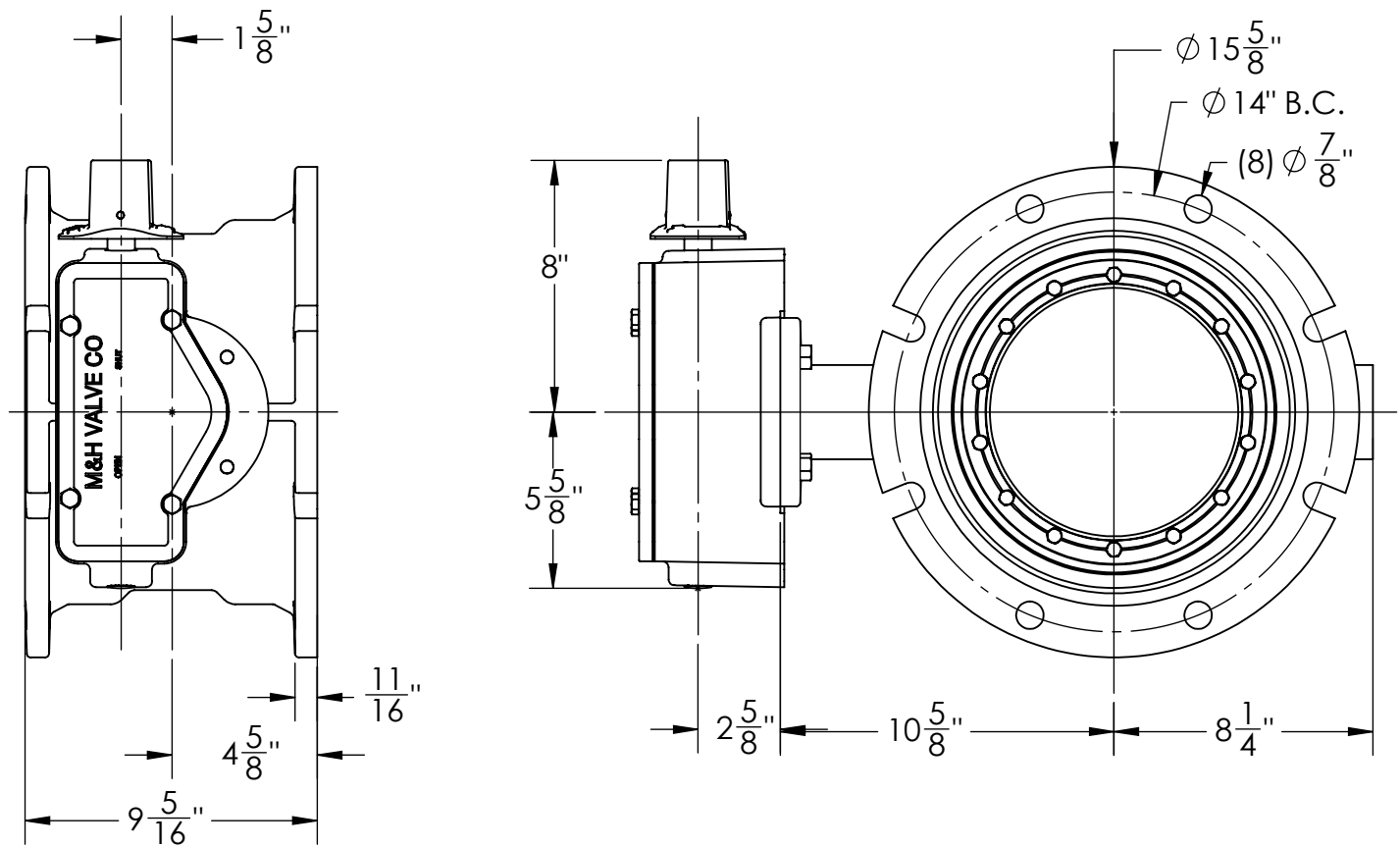
THIS DWG. AND ALL INFORMATION IS OUR PROPERTY AND SHALL NOT BE USED, COPIED, OR REPRODUCED WITHOUT WRITTEN CONSENT. DESIGN AND INVENTION RIGHTS RESERVED.



KENNEDY VALVE
Division of McWane, Inc.
1021 EAST WATER STREET ELMIRA, NEW YORK 14901

DRAWN: ZF
DATE: 1/9/17
DWG. NO. B08MBB11

**8" AWWA C504 - Style 4500 - CL150
BFV with F/A 12 MSS/ISO Connection
Sub-Assembly - Material List
MJ ENDS**



1. FLOW MAY BE IN EITHER DIRECTION
2. VALVE SHAFT WILL MEET OR EXCEED AWWA C504 REQUIREMENTS
3. REFERENCE AWWA C504 FOR FLANGES AND DRILLING (ANSI 125)
4. 29 TURNS TO CLOSE
5. 8 BOLTS ON EACH FLANGE
6. 3/4" DIAMETER OF BOLTS
7. OPERATED BY 2" AWWA OPERATING NUT/WRENCH NUT
8. RATED AND TESTED FOR 150psi WORKING PRESSURE

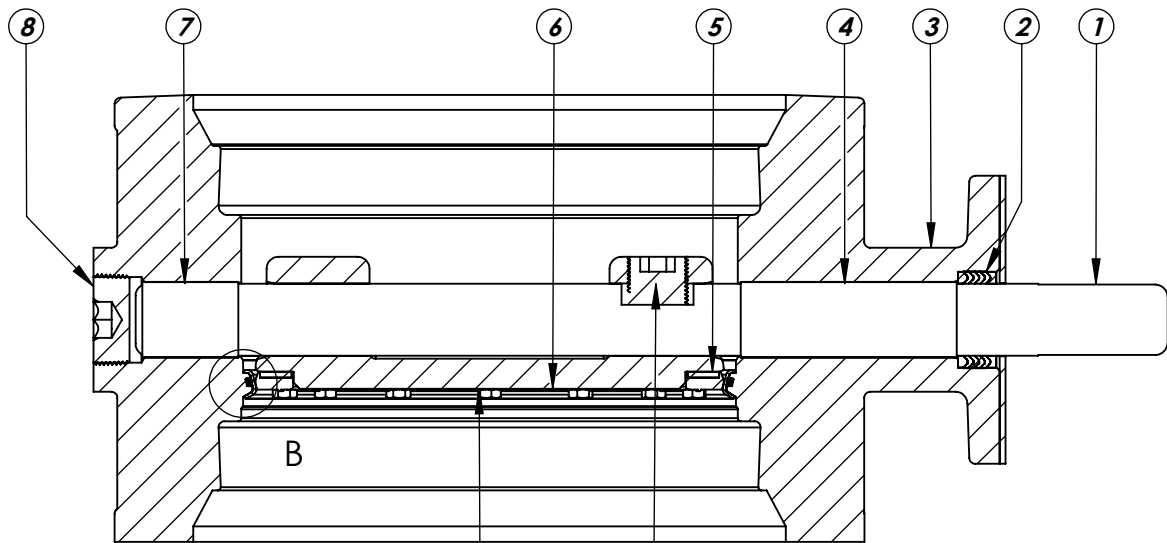
THIS DWG. AND ALL INFORMATION IS OUR PROPERTY AND SHALL NOT BE USED, COPIED, OR REPRODUCED WITHOUT WRITTEN CONSENT. DESIGN AND INVENTION RIGHTS RESERVED.



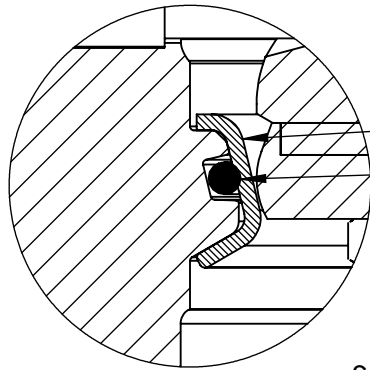
KENNEDY VALVE
 Division of McWane, Inc.
 1021 EAST WATER STREET ELMIRA, NEW YORK 14901

DRAWN: CTJ
DATE: 11/26/2018
DWG. NO.: B10MAM11

10" - Style 4500 - CL150
BFV with F/A 12 MSS/ISO Connection-
MJ ENDS - Buried Operator



SECTION A-A
SCALE 1 : 4



DETAIL B
SCALE 2 : 1.5

ITEM NO.	DESCRIPTION	MATERIAL
1	VANE SHAFT	304 STAINLESS STEEL, ASTM A-276
2	V-RING PACKING SET	EPDM, BUNA-N
3	BFV BODY	DUCTILE IRON ASTM A-536
4	UPPER JOURNAL BEARING	NYLATRON
5	VANE SEAT RING	EPT with SS INSERT
6	HEX HEAD CAPSCREW	18-8 STAINLESS STEEL with NYLOC PATCH
7	LOWER JOURNAL BEARING	NYLATRON
8	BFV BODY END PLUG	STEEL
9	BFV VANE	DUCTILE IRON ASTM A-536
10	VANE SHAFT TORQUE PLUG	18-8 STAINLESS STEEL
11	BODY SEAT RING	316 STAINLESS STEEL
12	BODY SEAT O-RING	BUNA-N

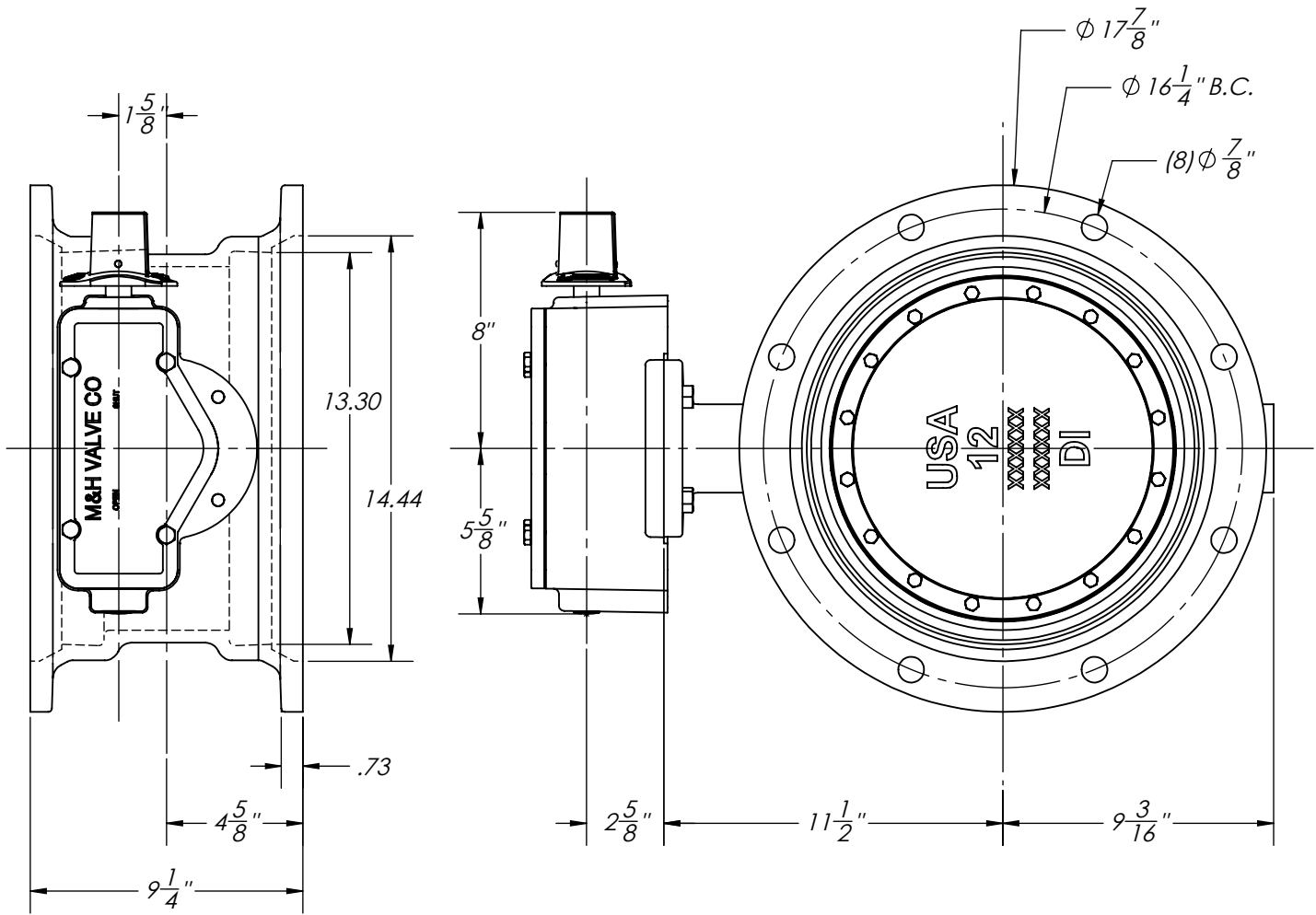
THIS DWG. AND ALL INFORMATION IS OUR PROPERTY AND SHALL NOT BE USED, COPIED, OR REPRODUCED WITHOUT WRITTEN CONSENT. DESIGN AND INVENTION RIGHTS RESERVED.



KENNEDY VALVE
Division of McWane, Inc.
1021 EAST WATER STREET ELMIRA, NEW YORK 14901

DRAWN: ZF
DATE: 1/9/17
DWG. NO. B10MBB11

**10" AWWA C504 - Style 4500 - CL150
BFV with F/A 12 MSS/ISO Connection
Sub-Assembly - Material List
MJ ENDS**



1. FLOW MAY BE IN EITHER DIRECTION
2. VALVE SHAFT WILL MEET OR EXCEED AWWA C504 REQUIREMENTS
3. 29 TURNS TO CLOSE
4. OPERATED BY 2" AWWA OPERATING NUT/WRENCH NUT
5. RATED AND TESTED FOR 150psi WORKING PRESSUR
6. 3/4" DIAMETER BOLTS
7. GASKETS, GLANDS, AND BOLTS FOR MECHANICAL JOINT FURNISHED WITH VALVE WHEN SPECIFIED ON ORDER

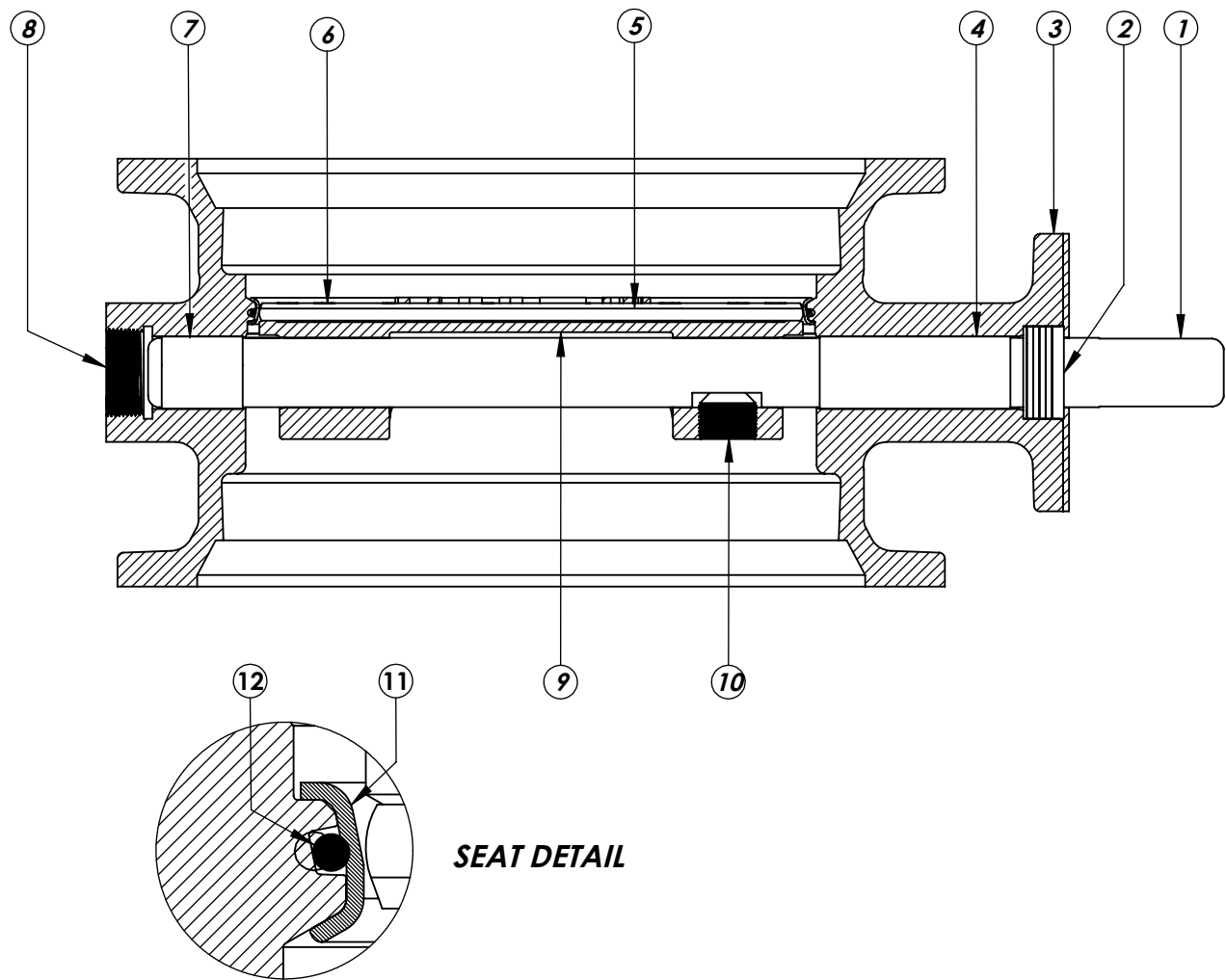
THIS DWG. AND ALL INFORMATION IS OUR PROPERTY AND SHALL NOT BE USED, COPIED, OR REPRODUCED WITHOUT WRITTEN CONSENT. DESIGN AND INVENTION RIGHTS RESERVED.



KENNEDY VALVE
 Division of McWane, Inc.
 1021 EAST WATER STREET ELMIRA, NEW YORK 14901

DRAWN: CTJ
DATE: 11/26/2018
DWG. NO. B12MAM11

12" - Style 4500 - CL150
BFV with F/A 12 MSS/ISO Connection-
MECHANICAL JOINT - Buried Operator



SEAT DETAIL

ITEM NO.	DESCRIPTION	MATERIAL
1	VANE SHAFT	304 STAINLESS STEEL, ASTM A-276
2	V-RING PACKING	EPDM, BUNA-N
3	BFV BODY	DUCTILE IRON ASTM A-536
4	UPPER JOURNAL BEARING	NYLATRON
5	VANE SEAT RING	EPT w/ SS INSERT
6	HEX HEAD CAP SCREW	18-8 STAINLESS STEEL w/ NYLOC PATCH
7	LOWER JOURNAL BEARING	NYLATRON
8	BFV BODY END PLUG	STEEL
9	BFV VANE	DUCTILE IRON ASTM A-536
10	VANE SHAFT TORQUE PLUG	18-8 STAINLESS STEEL
11	BODY SEAT RING	316 STAINLESS STEEL
12	BODY SEAT O-RING	BUNA-N

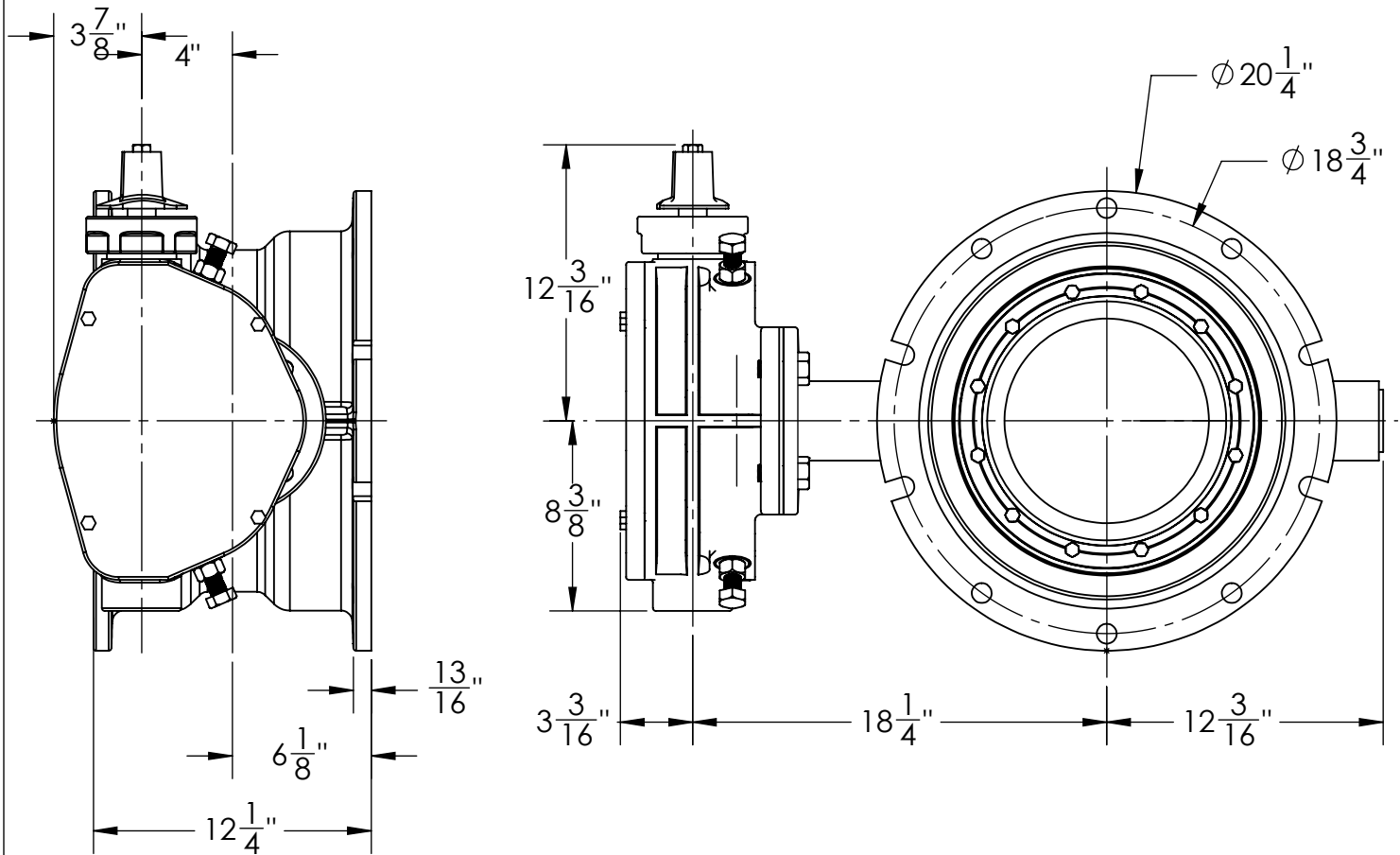
THIS DWG. AND ALL INFORMATION IS OUR PROPERTY AND SHALL NOT BE USED, COPIED, OR REPRODUCED WITHOUT WRITTEN CONSENT. DESIGN AND INVENTION RIGHTS RESERVED.



KENNEDY VALVE
 Division of McWane, Inc.
 1021 EAST WATER STREET ELMIRA, NEW YORK 14901

DRAWN: KLM
DATE: 10/2016
DWG. NO.
 B12MBB11

**12" AWWA C504 - Style 4500 - CL150
 BFV with F/A 12 MSS/ISO Connection
 Sub-Assembly - Material List
 MECHANICAL JOINT**



1. FLOW MAY BE IN EITHER DIRECTION
2. VALVE SHAFT WILL MEET OR EXCEED AWWA C504 STANDARDS
3. 48 TURNS TO CLOSE
4. 12 BOLTS ON EACH FLANGE
5. 3/4" DIA. OF BOLTS
6. OPERATED BY 2" AWWA OPERATING NUT/WRENCH NUT
7. RATED AND TESTED FOR 150psi WORKING PRESSURE
8. GASKETS, GLANDS, AND BOLTS FOR MECHANICAL JOINT FURNISHED WITH VALVE WHEN SPECIFIED ON ORDER
9. WEIGHT OF VALVE IS 450 LBS.

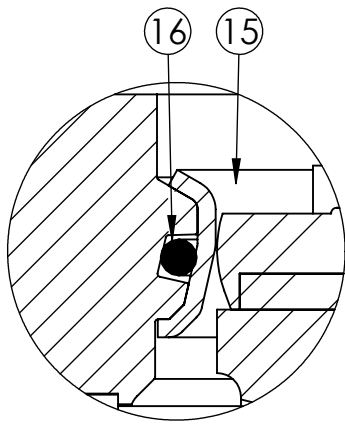
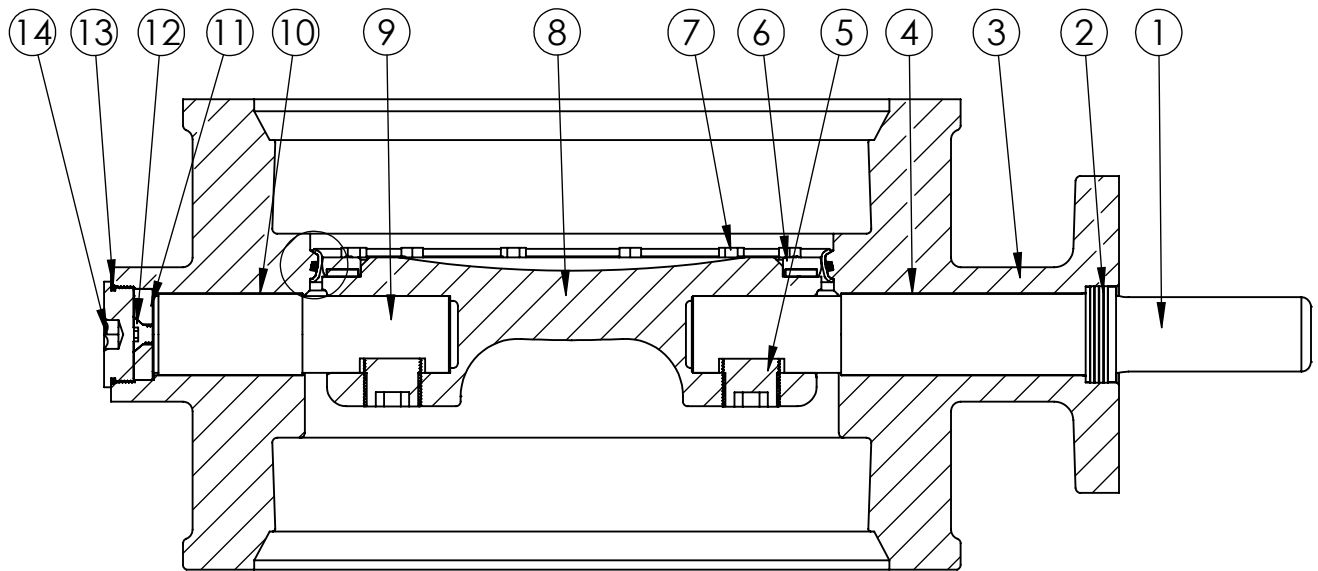
THIS DWG. AND ALL INFORMATION IS OUR PROPERTY AND SHALL NOT BE USED, COPIED, OR REPRODUCED WITHOUT WRITTEN CONSENT. DESIGN AND INVENTION RIGHTS RESERVED.



KENNEDY VALVE
Division of McWane, Inc.
1021 EAST WATER STREET ELMIRA, NEW YORK 14901

DRAWN: ZF
DATE: 12/3/2018
DWG. NO.
B14MAM1100

14" - Style 4500 - CL150
BFV with F/A 16 MSS/ISO Connection-
MECHANICAL JOINT - Buried Operator



SEAT DETAIL

ITEM NO.	DESCRIPTION	MATERIAL
1	OPERATOR SHAFT	304 STAINLESS STEEL, ASTM A-276
2	V-RING PACKING SET	EPDM, BUNA-N
3	BFV BODY	DUCTILE IRON ASTM A-536
4	UPPER JOURNAL BEARING	FIBER & REINFORCED TEFLON
5	TORQUE PLUG	304 STAINLESS STEEL, ASTM A-276
6	VANE SEAT RING	EPT W/ STAINLESS STEEL INSERT
7	HEX HEAD CAP SCREW	18-8 STAINLESS STEEL W/ NYLOC PATCH
8	BFV VANE	DUCTILE IRON ASTM A-276
9	THRUST SHAFT	304 STAINLESS STEEL, ASTM A-276
10	LOWER JOURNAL BEARING	FIBER & REINFORCED TEFLON
11	THRUST BEARING	BRONZE ALLOY
12	THRUST BEARING CAP SCREW	18-8 STAINLESS STEEL
13	BODY END PLUG O-RING	BUNA-N
14	BODY END PLUG	STEEL
15	BODY SEAT RING	316 STAINLESS STEEL
16	BODY SEAT O-RING	BUNA-N

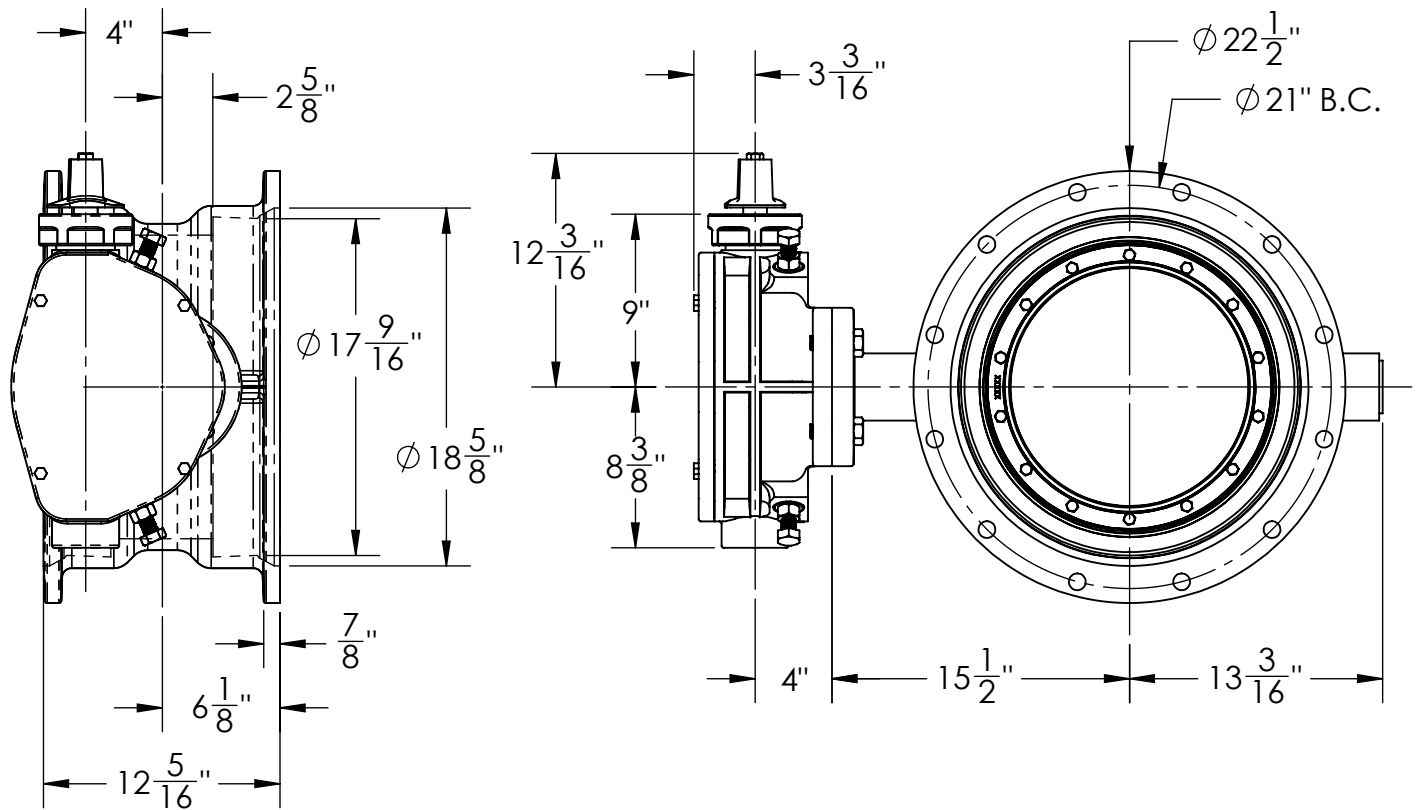
THIS DWG. AND ALL INFORMATION IS OUR PROPERTY AND SHALL NOT BE USED, COPIED, OR REPRODUCED WITHOUT WRITTEN CONSENT. DESIGN AND INVENTION RIGHTS RESERVED.



KENNEDY VALVE
Division of McWane, Inc.
1021 EAST WATER STREET ELMIRA, NEW YORK 14901

DRAWN: ZF
DATE: 8/31/2018
DWG. NO.
B14MBB11

14" AWWA C504 - STYLE 4500 - CL150
BFV w/ F/A16 MSS/ISO CONNECTION
SUB-ASSEMBLY - MATERIAL LIST
MECHANICAL JOINT ENDS



1. FLOW MAY BE IN EITHER DIRECTION
2. VALVE SHAFT WILL MEET OR EXCEED AWWA C504 STANDARDS
3. 48 TURNS TO CLOSE
4. 12 BOLTS ON EACH FLANGE
5. 3/4" DIA. OF BOLTS
6. OPERATED BY 2" AWWA OPERATING NUT/WRENCH NUT
7. RATED AND TESTED FOR 150psi WORKING PRESSURE
8. GASKETS, GLANDS, AND BOLTS FOR MECHANICAL JOINT FURNISHED WITH VALVE WHEN SPECIFIED ON ORDER
9. WEIGHT OF VALVE IS 450 LBS.

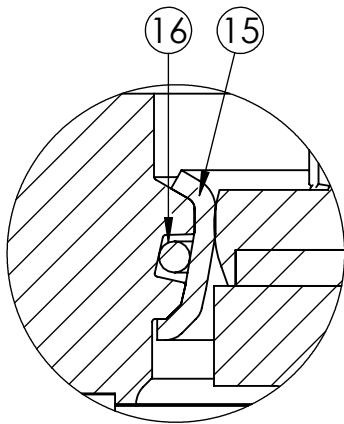
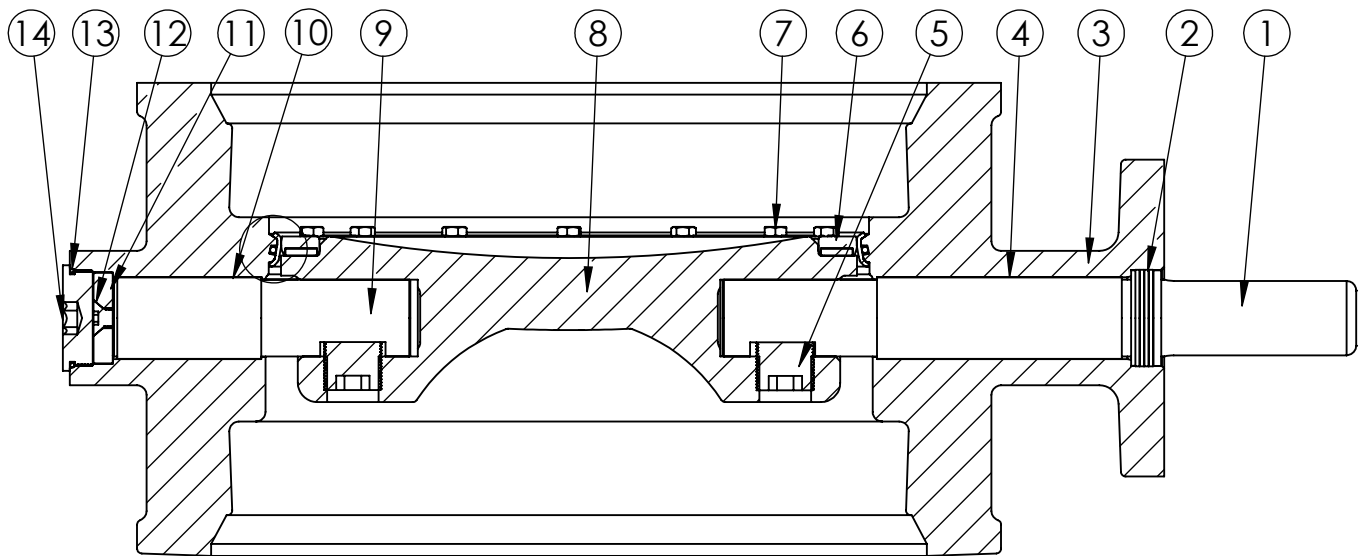
THIS DWG. AND ALL INFORMATION IS OUR PROPERTY AND SHALL NOT BE USED, COPIED, OR REPRODUCED WITHOUT WRITTEN CONSENT. DESIGN AND INVENTION RIGHTS RESERVED.



KENNEDY VALVE
Division of McWane, Inc.
1021 EAST WATER STREET ELMIRA, NEW YORK 14901

DRAWN: CTJ
DATE: 12/3/2018
DWG. NO.
B16MAM1100

16" - Style 4500 - CL150
BFV with F/A 16 MSS/ISO Connection-
MECHANICAL JOINT - Buried Operator



SEAT DETAIL

ITEM NO.	DESCRIPTION	MATERIAL
1	OPERATOR SHAFT	304 STAINLESS STEEL, ASTM A-276
2	V-RING PACKING SET	EPDM, BUNA-N
3	BFV BODY	DUCTILE IRON ASTM A-536
4	UPPER JOURNAL BEARING	FIBER & REINFORCED TEFLON
5	TORQUE PLUG	304 STAINLESS STEEL, ASTM A-276
6	VANE SEAT RING	EPT W/ STAINLESS STEEL INSERT
7	HEX HEAD CAP SCREW	18-8 STAINLESS STEEL W/ NYLOC PATCH
8	BFV VANE	DUCTILE IRON ASTM A-276
9	THRUST SHAFT	304 STAINLESS STEEL, ASTM A-276
10	LOWER JOURNAL BEARING	FIBER & REINFORCED TEFLON
11	THRUST BEARING	BRONZE ALLOY
12	THRUST BEARING CAP SCREW	18-8 STAINLESS STEEL
13	BODY END PLUG O-RING	BUNA-N
14	BODY END PLUG	STEEL
15	BODY SEAT RING	316 STAINLESS STEEL
16	BODY SEAT O-RING	BUNA-N

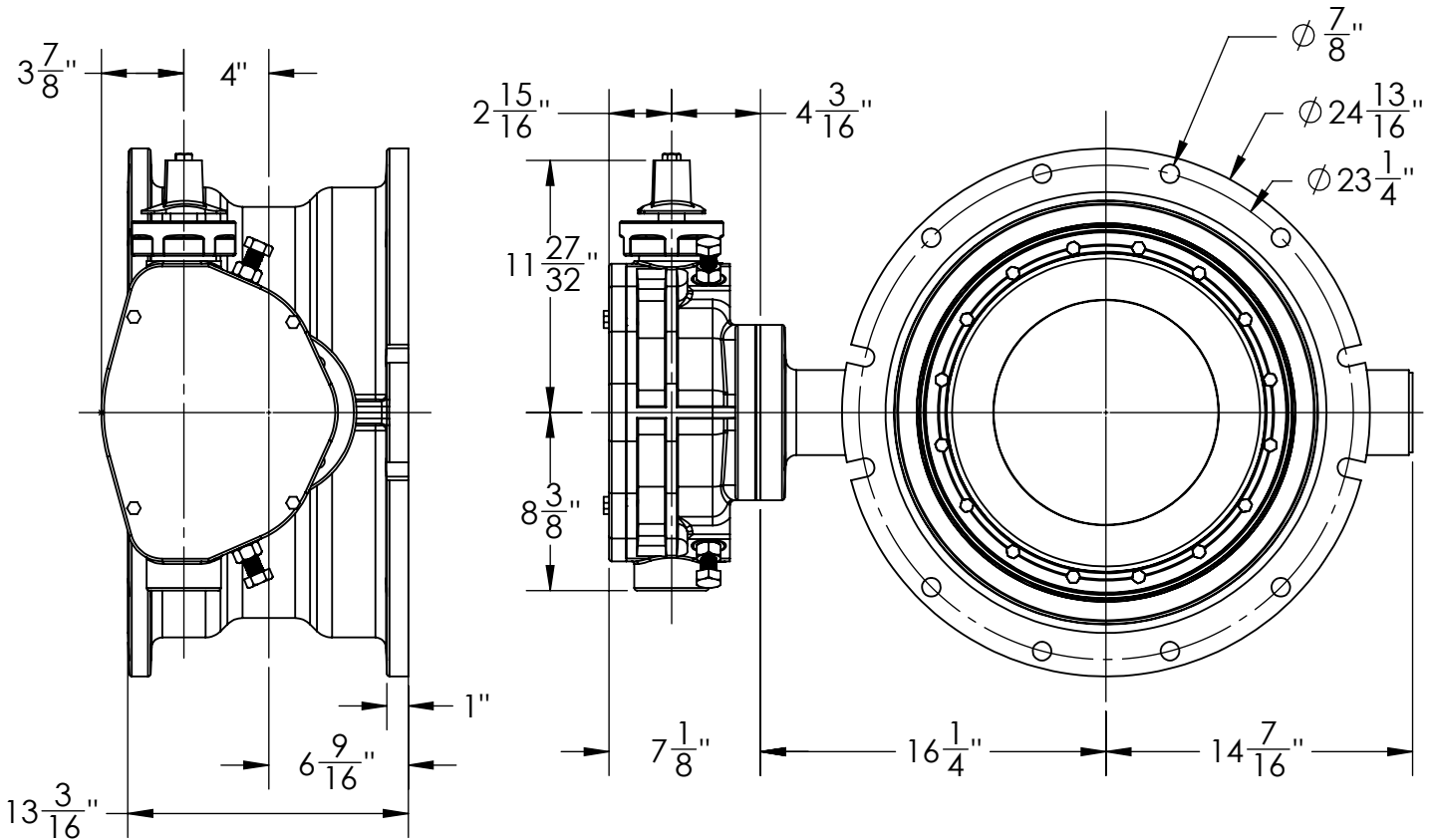
THIS DWG. AND ALL INFORMATION IS OUR PROPERTY AND SHALL NOT BE USED, COPIED, OR REPRODUCED WITHOUT WRITTEN CONSENT. DESIGN AND INVENTION RIGHTS RESERVED.



KENNEDY VALVE
 Division of McWane, Inc.
 1021 EAST WATER STREET ELMIRA, NEW YORK 14901

DRAWN: ZF
DATE: 8/31/2018
DWG. NO. B16MBB11

16" AWWA C504 - STYLE 4500 - CL150
 BFV w/ F/A16 MSS/ISO CONNECTION
 SUB-ASSEMBLY - MATERIAL LIST
 MECHANICAL JOINT ENDS



1. FLOW MAY BE IN EITHER DIRECTION
2. VALVE SHAFT WILL MEET OR EXCEED AWWA C504 STANDARDS
3. 48 TURNS TO CLOSE
4. 16 BOLTS ON EACH FLANGE
5. 3/4" DIA. OF BOLTS
6. OPERATED BY 2" AWWA OPERATING NUT/WRENCH NUT
7. RATED AND TESTED FOR 150psi WORKING PRESSURE
8. GASKETS, GLANDS, & BOLTS FOR MECH. JOINT FURNISHED w/ VALVE WHEN SPECIFIED ON ORDERS
9. WEIGHT OF VALVE IS 450 LBS.

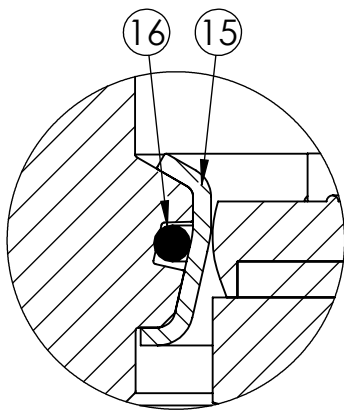
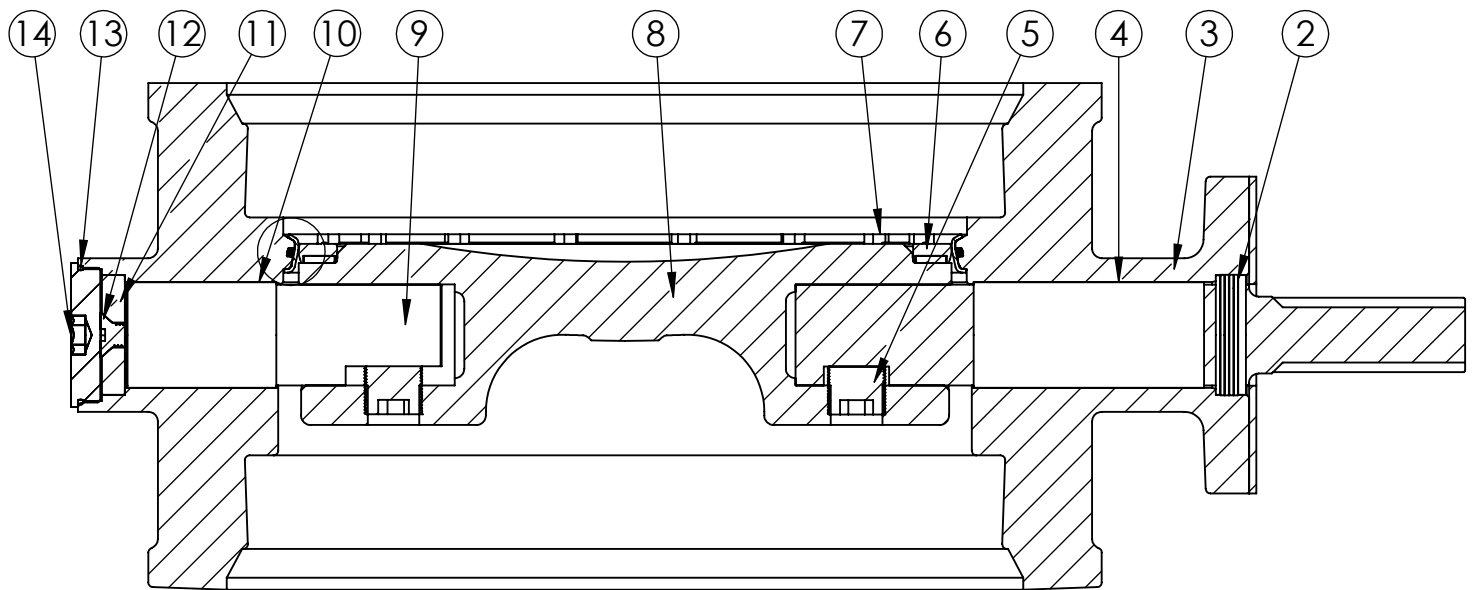
THIS DWG. AND ALL INFORMATION IS OUR PROPERTY AND SHALL NOT BE USED, COPIED, OR REPRODUCED WITHOUT WRITTEN CONSENT. DESIGN AND INVENTION RIGHTS RESERVED.



KENNEDY VALVE
Division of McWane, Inc.
1021 EAST WATER STREET ELMIRA, NEW YORK 14901

DRAWN: CTJ
DATE: 11/27/2018
DWG. NO. B18MAM11

18" - Style 4500 - CL150
BFV with F/A16 MSS/ISO Connection-
MJ x MJ ENDS - Buried Operator



SEAT DETAIL

ITEM NO.	DESCRIPTION	MATERIAL
1	OPERATOR SHAFT	304 STAINLESS STEEL, ASTM A-276
2	V-RING PACKING SET	EPDM, BUNA-N
3	BFV BODY	DUCTILE IRON ASTM A-536
4	UPPER JOURNAL BEARING	FIBER & REINFORCED TEFLON
5	TORQUE PLUG	304 STAINLESS STEEL, ASTM A-276
6	VANE SEAT RING	EPT W/ STAINLESS STEEL INSERT
7	HEX HEAD CAP SCREW	18-8 STAINLESS STEEL W/ NYLOC PATCH
8	BFV VANE	DUCTILE IRON ASTM A-276
9	THRUST SHAFT	304 STAINLESS STEEL, ASTM A-276
10	LOWER JOURNAL BEARING	FIBER & REINFORCED TEFLON
11	THRUST BEARING	BRONZE ALLOY
12	THRUST BEARING CAP SCREW	18-8 STAINLESS STEEL
13	BODY END PLUG O-RING	BUNA-N
14	BODY END PLUG	STEEL
15	BODY SEAT RING	316 STAINLESS STEEL
16	BODY SEAT O-RING	BUNA-N

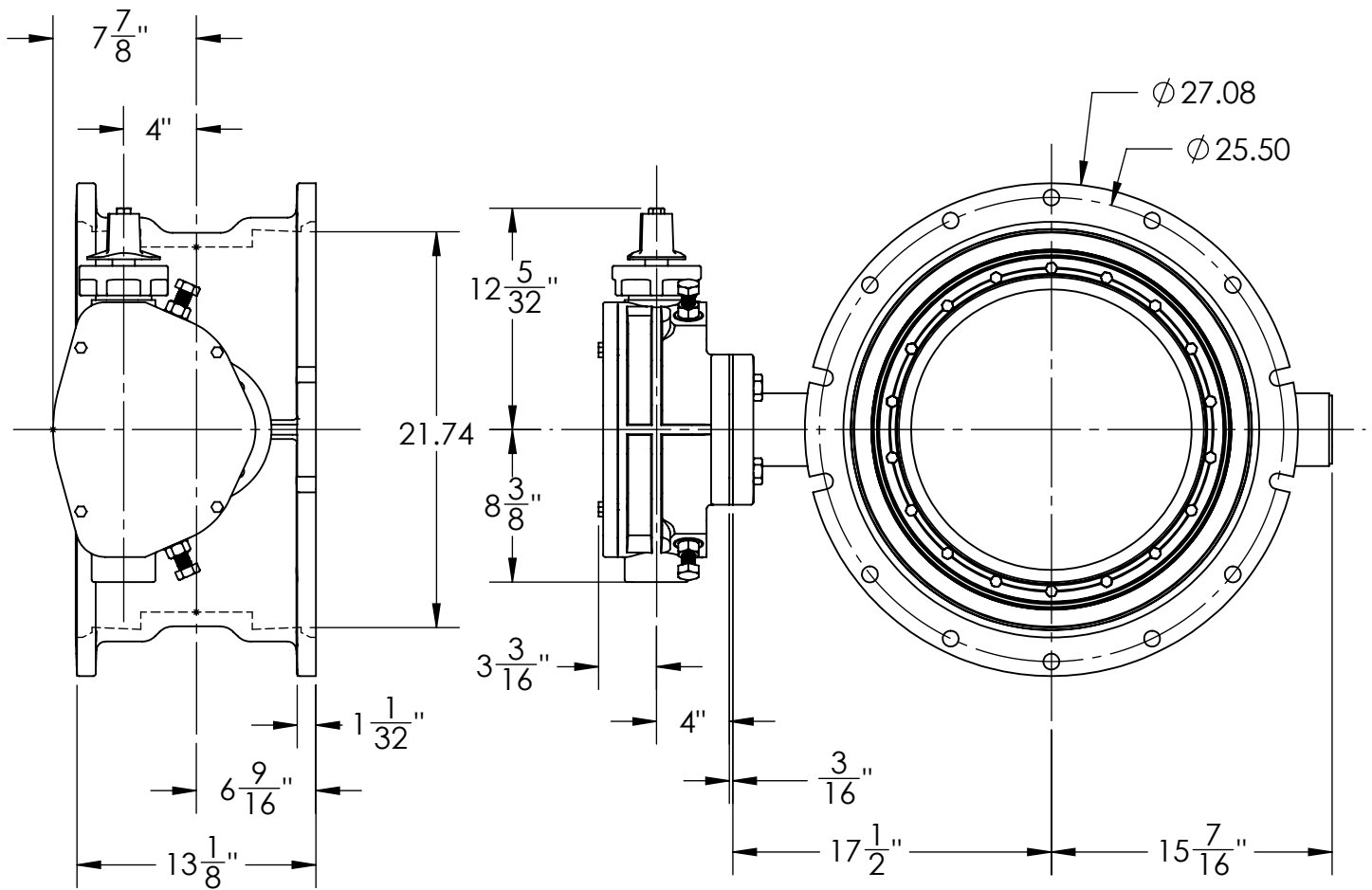
THIS DWG. AND ALL INFORMATION IS OUR PROPERTY AND SHALL NOT BE USED, COPIED, OR REPRODUCED WITHOUT WRITTEN CONSENT. DESIGN AND INVENTION RIGHTS RESERVED.



KENNEDY VALVE
 Division of McWane, Inc.
 1021 EAST WATER STREET ELMIRA, NEW YORK 14901

DRAWN: ZF
DATE: 8/31/2018
DWG. NO. B18MBB11

18" AWWA C504 - STYLE 4500 - CL150
 BFV w/ F/A16 MSS/ISO CONNECTION
 SUB-ASSEMBLY - MATERIAL LIST
 MJ ENDS



1. FLOW MAY BE IN EITHER DIRECTION
2. VALVE SHAFT WILL MEET OR EXCEED AWWA C504 REQUIREMENTS
3. NUMBER OF TURNS TO CLOSE: 48
4. NUMBER OF BOLTS ON EACH FLANGE: 14
5. DIAMETER OF BOLTS: 3/4
6. INSIDE DIAMETER OF VALVE HUB: 21.74"
7. OPERATED BY 2" AWWA OPERATING NUT/WRENCH NUT
8. RATED AND TESTED FOR 150psi WORKING PRESSURE
9. GASKETS, GLANDS, AND BOLTS FOR MECHANICAL JOINT FURNISHED WITH VALVE SPECIFIED ON ORDER

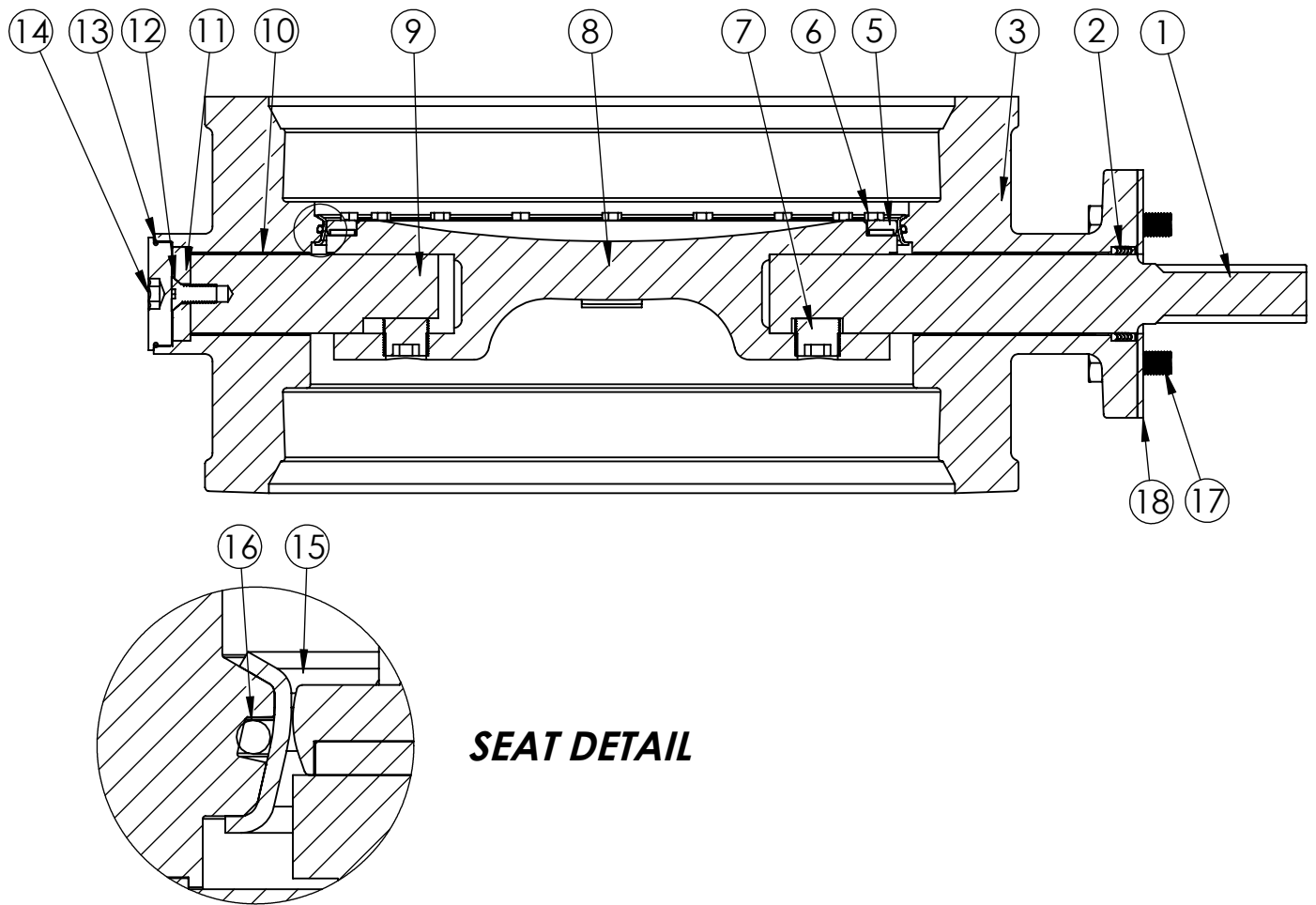
THIS DWG. AND ALL INFORMATION IS OUR PROPERTY AND SHALL NOT BE USED, COPIED, OR REPRODUCED WITHOUT WRITTEN CONSENT. DESIGN AND INVENTION RIGHTS RESERVED.



KENNEDY VALVE
Division of McWane, Inc.
1021 EAST WATER STREET ELMIRA, NEW YORK 14901

DRAWN: CTJ
DATE: 11/26/2018
DWG. NO.: B20MAM11

20" - Style 4500 - CL150
BFV with 1250 F/A16 MSS/ISO Connection -
Mechanical Joint - Buried Operator



SEAT DETAIL

ITEM NO.	DESCRIPTION	MATERIAL
1	OPERATOR SHAFT	304 STAINLESS STEEL, ASTM A-276
2	V-RING PACKING SET	EPDM, BUNA-N
3	BFV BODY	DUCTILE IRON ASTM A-536
4	UPPER JOURNAL BEARING	FIBER & REINFORCED TEFLON
5	VANE SEAT RING	EPT W/ STAINLESS STEEL INSERT
6	HEX HEAD CAP SCREW	18-8 STAINLESS STEEL W/ NYLOC PATCH
7	TORQUE PLUG	304 STAINLESS STEEL, ASTM A-276
8	BFV VANE	DUCTILE IRON ASTM A-536
9	THRUST SHAFT	304 STAINLESS STEEL, ASTM A-276
10	LOWER JOURNAL BEARING	FIBER & REINFORCED TEFLON
11	THRUST BEARING	BRONZE ALLOY
12	THRUST BEARING CAP SCREW	18-8 STAINLESS STEEL
13	BODY END PLUG O-RING	BUNA-N
14	BODY END PLUG	STEEL
15	BODY SEAT RING	316 STAINLESS STEEL
16	BODY SEAT O-RING	BUNA-N
17	OPERATOR MOUNTING BOLTS	18-8 STAINLESS STEEL
18	ISO FA16 SEAL PLATE	COMMERCIAL STEEL

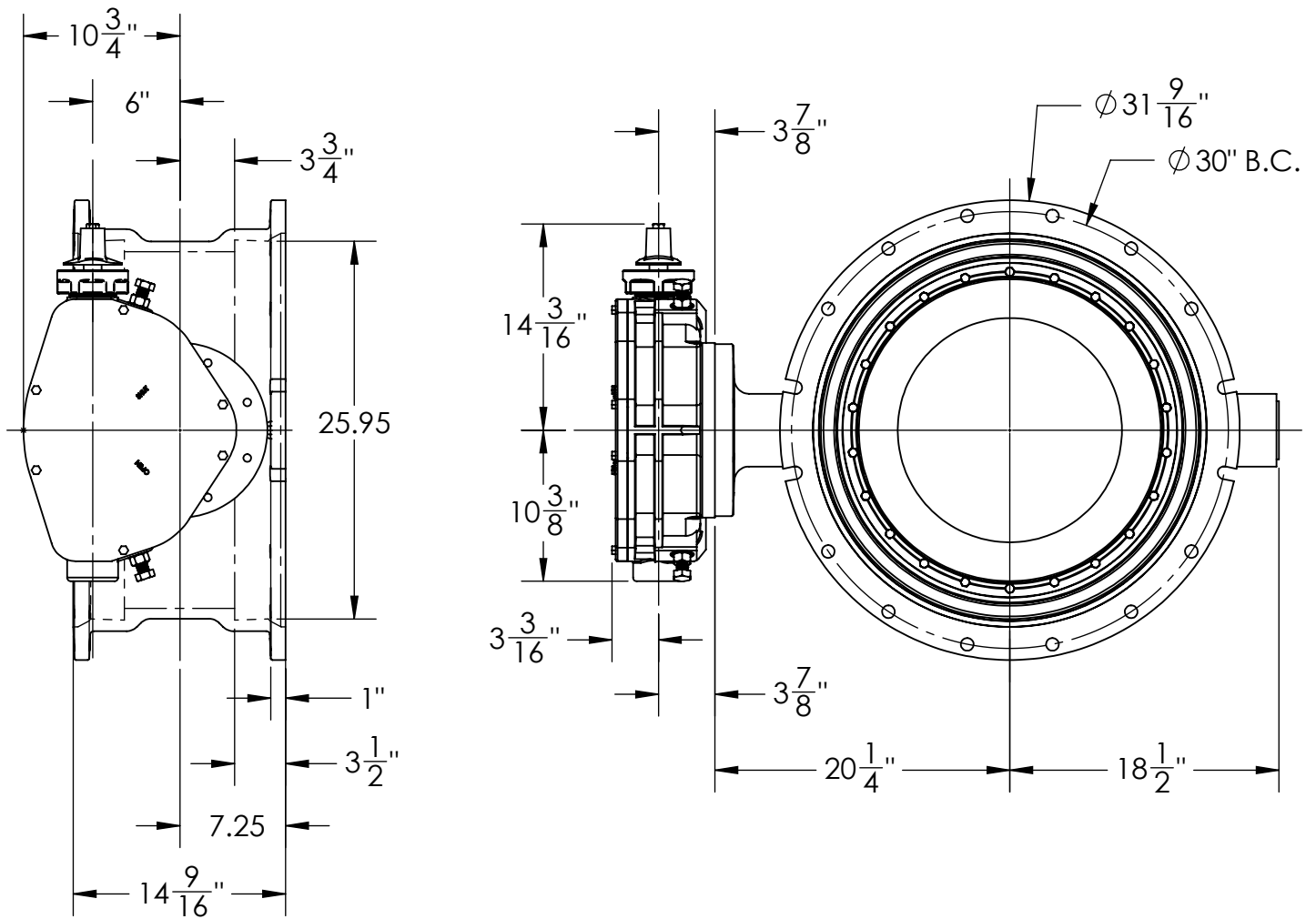
THIS DWG. AND ALL INFORMATION IS OUR PROPERTY AND SHALL NOT BE USED, COPIED, OR REPRODUCED WITHOUT WRITTEN CONSENT. DESIGN AND INVENTION RIGHTS RESERVED.



KENNEDY VALVE
 Division of McWane, Inc.
 1021 EAST WATER STREET ELMIRA, NEW YORK 14901

DRAWN: ZF
DATE: 9/27/2018
DWG. NO. B20MBB11

20" AWWA C504 - STYLE 4500 - CL150
 BFV w/ F/A16 MSS/ISO CONNECTION
 SUB-ASSEMBLY - MATERIAL LIST
 MECHANICAL JOINT ENDS



1. FLOW MAY BE IN EITHER DIRECTION
2. 72 TURNS TO CLOSE
3. VALVE SHAFT WILL MEET OR EXCEED AWWA C504 REQUIREMENTS
4. NUMBER OF TURNS TO CLOSE
5. (16) $3/4"$ BOLTS ON EACH FLANGE
6. OPERATED BY 2" AWWA OPERATING NUT / WRENCH NUT
7. RATED AND TESTED FOR 150psi WORKING PRESSURE
8. GASKETS, GLANDS, AND BOLTS FOR MECHANICAL JOINT FURNISHED WITH VALVE WHEN SPECIFIED ON ORDERS
9. VALVE WEIGHT IS 800 LBS.

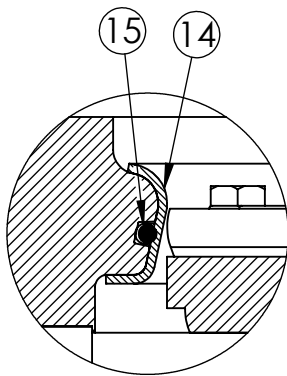
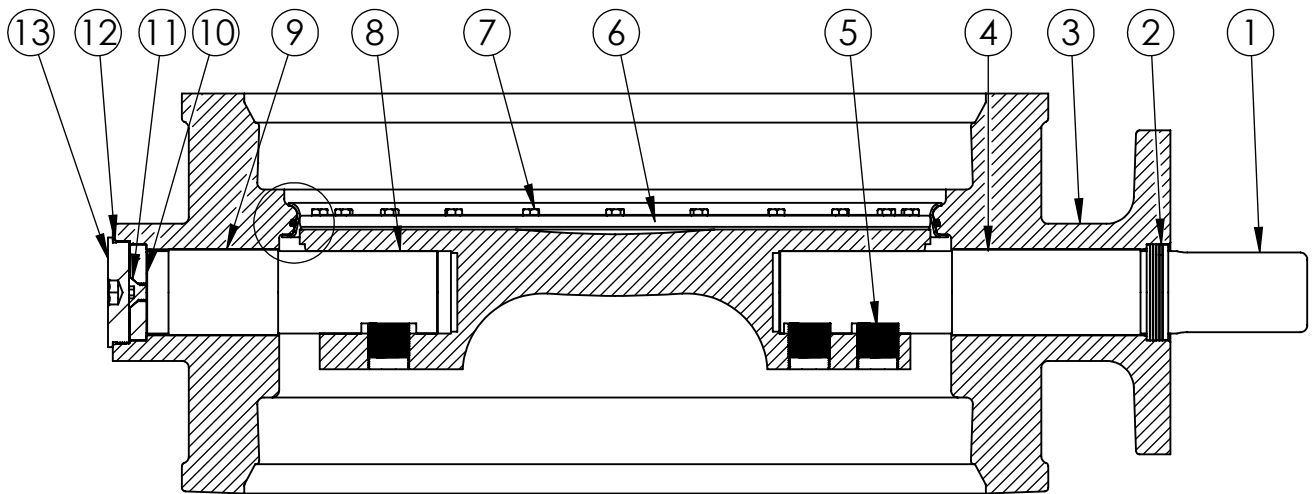
THIS DWG. AND ALL INFORMATION IS OUR PROPERTY AND SHALL NOT BE USED, COPIED, OR REPRODUCED WITHOUT WRITTEN CONSENT. DESIGN AND INVENTION RIGHTS RESERVED.



KENNEDY VALVE
Division of McWane, Inc.
1021 EAST WATER STREET ELMIRA, NEW YORK 14901

DRAWN: CTJ
DATE: 11/26/2018
DWG. NO. B24MAM11

24" AWWA C504 - STYLE 4500 - CL150
BFV w/ F/A25 MSS/ISO CONNECTION
SUB-ASSEMBLY - DIMENSIONS
MECHANICAL JOINT



SEAT DETAIL

ITEM NO.	DESCRIPTION	MATERIAL
1	OPERATOR SHAFT	304 STAINLESS STEEL, ASTM A-276
2	V-RING PACKING SET	EPDM, BUNA-N
3	BFV BODY	DUCTILE IRON ASTM A-536
4	UPPER JOURNAL BEARING	FIBER & REINFORCED TEFLON
5	TORQUE PLUG	304 STAINLESS STEEL, ASTM A-276
6	VANE SEAT RING	EPT W/ STAINLESS STEEL INSERT
7	HEX HEAD CAP SCREW	18-8 STAINLESS STEEL W/ NYLOC PATCH
8	THRUST SHAFT	304 STAINLESS STEEL, ASTM A-276
9	LOWER JOURNAL BEARING	FIBER & REINFORCED TEFLON
10	THRUST BEARING	BRONZE ALLOY
11	THRUST BEARING CAP SCREW	18-8 STAINLESS STEEL
12	BODY END PLUG O-RING	EPDM
13	BODY END PLUG	STEEL
14	BODY SEAT RING	316 STAINLESS STEEL
15	BODY SEAT O-RING	BUNA-N

THIS DWG. AND ALL INFORMATION IS OUR PROPERTY AND SHALL NOT BE USED, COPIED, OR REPRODUCED WITHOUT WRITTEN CONSENT. DESIGN AND INVENTION RIGHTS RESERVED.



KENNEDY VALVE
Division of McWane, Inc.
1021 EAST WATER STREET ELMIRA, NEW YORK 14901

DRAWN: ZF
DATE: 6/28/18
DWG. NO.
BMJ-15-45-24-ISO

24" AWWA C504 - STYLE 4500 - CL150
BFV w/ F/A25 MSS/ISO CONNECTION
SUB-ASSEMBLY - MATERIAL LIST
MECHANICAL JOINT