



MCWANE
PLANT & INDUSTRIAL

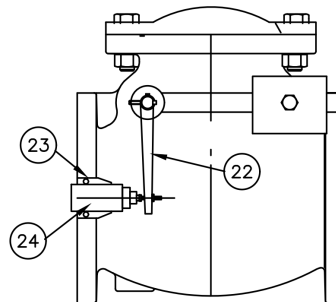
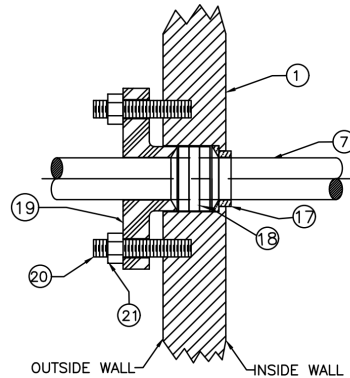
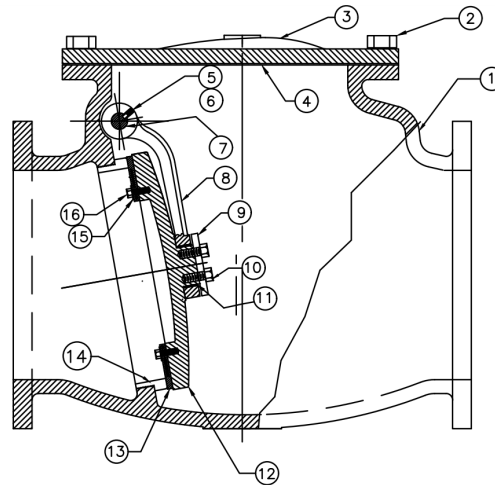
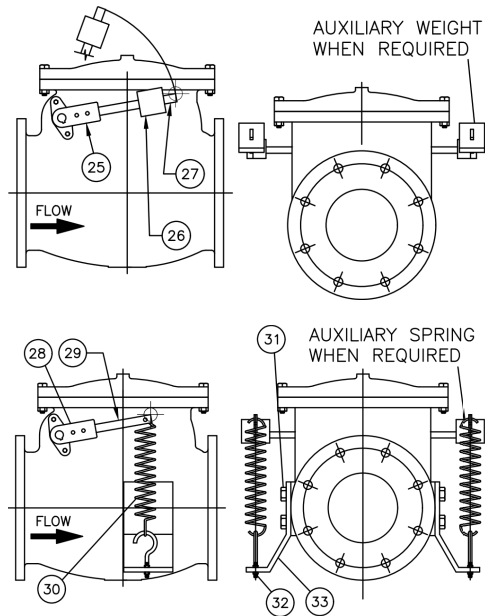


KENNEDY VALVE

GRAVITY / PLAIN SWING CHECK VALVE SIZES 14" - 36" - PARTS LIST

DRAWING NO.- LCV-A2-D DATE - 4/17/18

DRAWN BY - CTJ



PARTS LIST		
PART No.	PART	MATERIAL & ASTM DESIGNATION
1	Body - F.E.	Ductile Iron A536 65-45-12 or 70-50-05
2	Cover Bolts	ASTM A-307 Gr. B or A EZ Plated
3	Cover	Ductile Iron A536 65-45-12 or 70-50-05
4	Cover O-ring	Buna-N Durometer 70 Approved
5	Clapper Arm Key	304 Stainless Steel
6	Set Screw	Alloy Steel (RC 45-63)
7	Hinge Pin	Stainless Steel ASTM A-276 Yupe 303
8	Clapper Arm	Ductile Iron A536 65-45-12 or 70-50-05
9	Clapper Cap Plate	304 Stainless Steel
10	Hex Bolt Cap Plate	18-8 Stainless Steel
11	Clapper Arm Bushing	Brass C26000
12	Clapper	Ductile Iron A536 65-45-12 or 70-50-05
13	Encapsulated Rubber Clamp Ring	Buna-N Durometer 70 Approved
14	Body Ring	Bronze Alloy C89836
15	Washer, Flat	18-8 Stainless Steel
16	Hex Bolt Clamp Ring	18-8 Stainless Steel
17	Stuffing Box Bushing	Bronze Alloy C89850
18	Packing	Multi-Lock Braid Style ML2254 PTFE
19	Stuffing Box Gland	Ductile Iron A536 65-45-12 or 70-50-05
20	Stud	Steel ASTM A307, EZ Plated
21	Hex Nut	18-8 Stainless Steel

Limit Switch:

22	Tripper Arm	Steel
23	Mounting Bracket	Steel
24	Limit Switch	SD-D-Type-CR53E

Lever & Weight Check Valve:

25	Weight Lever Arm	Ductile Iron
26	Weight	Fab. Steel
27	Weight Arm Bar	CR Steel C-1018/1020

Lever & Spring Check Valve:

28	Spring Arm Lever	Ductile Iron
29	Spring Arm Bar	CR Steel C-1018/1020
30	Spring	Steel
31	Spring Bracket Cap Screw	Steel A-307 Grade B
32	Spring Eyebolt	Steel A-307 Grade B
33	Spring Bracket	Steel



MCWANE
PLANT & INDUSTRIAL



KENNEDY VALVE

GRAVITY / PLAIN SWING CHECK VALVE SIZES 14" - 36" - DIMENSIONS

DRAWING NO.- LCV-A2 DATE - 10/22/12

DRAWN BY - TRIJ

DIMENSIONS							
SIZE	14	16	18	20	24	30	36
F	31	36	40	40	48	49 ½	63
G	1 ¾	1 7/16	1 9/16	1 11/16	1 ¾	2 ½	2 ¾
H	21	23 ½	25	27 ½	32	38 ¾	46
J	18 ¾	21 ¼	22 ¾	25	29 ½	36	42 ¾
K	12-1	16-1	16-1 ½	20-1 ½	20-1 ¼	28-1 ¼	32-1 ½
L	22 ¾	25 ¾	27 ½	32	34 ¾	41	47
R	18 ¾	19 1/16	25	24 ½	24 11/16	28	34

Lever & Spring Check Valves - Style 259-02

T	18 ½	19	20 ¾	22 ½	26	28 ¼	35
WEIGHT	1150	1630	1835	2500	3415	4950	

Lever & Weight Check Valves - Style 159-02

S	19	19 ½	20 ¾	22 ½	27 ¾	29 ¾	35
U	32 ½	34 ½	40	42	54 ½	57 ½	
WEIGHT	1130	1530	1903	2383	3298	5550	

Plain / Swing Check Valves - 59-02

T	18 ½	19	20 ¾	22 ½	26	28 ¼	35
WEIGHT	1060	1460	1750	2230	3040	5200	

NOTES:

These dimensions will be phased in during 2013. Contact factory for exact laying lengths.
Check laying lengths when replacing valves that were manufactured prior to 2013.
Dim "V" consult M&H for max. cut-off of hinge pin to eliminate clearance problems.

