

# KENFLEX RESILIENT HINGED CHECK VALVE

SIZES 3"-12" AWWA C508 FULL-FLOW FLEXIBLE SWING FLAP DESIGN



\* Shown with optional position indicator

## STANDARD FEATURES

- Sizes: 3" - 12"
- Body / Cover: ASTM A536 Ductile Iron
- Flapper: EPDM
- End Connection: ANSI B16.1 Class 125 Flange
- 250 PSI working pressure; ANSI 125# flanged connection.

## OPTIONS

- Mechanical disc position indicator for instant visual verification of disc position. This allows for limit switches and other monitoring devices to be installed.
- Backflow actuator for manual backflow operation. Commonly used for priming pumps, flushing lines and system testing.

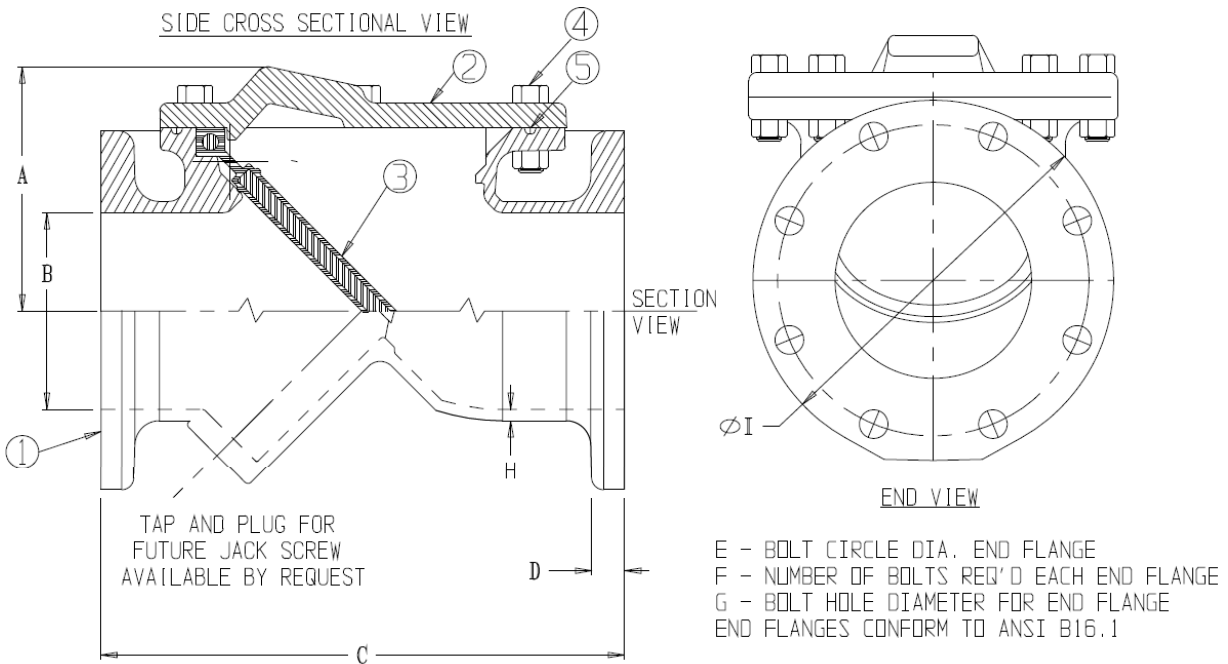
## ADDITIONAL FEATURES

- **Low maintenance design:** Flexible disc is the only moving part. No mechanical hinges, pivot pins, packing or bearings to wear out or fail.
- **Enhanced sealing disc design:** O-ring design on seating surfaces ensure bubble tight seating.
- **No-clog, dirty-water compatibility:** 100% flow area for lower head loss. Ability to pass large solids.
- **Angled Flow way:** Reduces travel of the disc and reduces the opportunity for water hammer.
- **Increased Flow path:** Flow areas is equal or greater than the attaching pipe size, contributing to the low head loss.
- **Bubble-tight sealing:** Tested to one million cycles per AWWA C508.
- **Full service access panel:** Allows removal of disc without removing the valve from the line.
- **Non-slam design:** Quiet operation.
- **Suitable for vertical or horizontal installation:** Provided valve is installed with proper flow arrow.
- Potable water or wastewater service applications.
- Bottom plug access port. For installing backflush devices.
- NSF/ANSI 61/372 Certified.
- Fusion Bonded Epoxy Coated Interior & Exterior. Exterior is suitable for overcoating for matching color coordination in plant settings or buried service applications.



# KENFLEX RESILIENT HINGED CHECK VALVE

SIZES 3"-12" AWWA C508 FULL-FLOW FLEXIBLE SWING FLAP DESIGN



DIMENSIONS									
SIZE	A (APPROX.)	ØB	C	D (NDM)	ØE	F # BOLTS	ØG	H (NDM)	I
3	5.37	4.00	13	1.00	6.00	4	X	0.31	9.0
4	5.37	4.00	13	1.00	7.50	8	0.75	0.31	9.0
6	7.45	6.00	16	1.06	9.50	8	0.88	0.34	11.0
8	8.77	8.00	19.5	1.19	11.75	8	0.88	0.34	13.5
10	10.20	10.00	24.5	1.25	14.25	12	1.00	0.38	16.0
12	11.61	12.00	27.5	1.28	17.00	12	1.00	0.41	19.0

3" Valve (4) 0.62UNC-11-2B Tapped Holes (G) Straddle C.L. similar to other sizes.

PARTS LIST			
PART No.	PART	MATERIAL	ASTM DESIGNATION
1	Body (FLG x FLG)	Ductile Iron, Coated	ASTM A536 GR 65-45-12
2	Cover Plate	Ductile Iron, Coated	ASTM A536 GR 65-45-12
3	Flapper	EPDM Flapper, Met. Insert	A536 DI/D-2000 BK 807
4	Cover Bolts & Nuts	Stainless Steel	SS 18-8 F593
5	O-Ring	Nutrilite (Buna-N)	ASTM D2000