



MCWANE
PLANT & INDUSTRIAL



KENNEDY VALVE

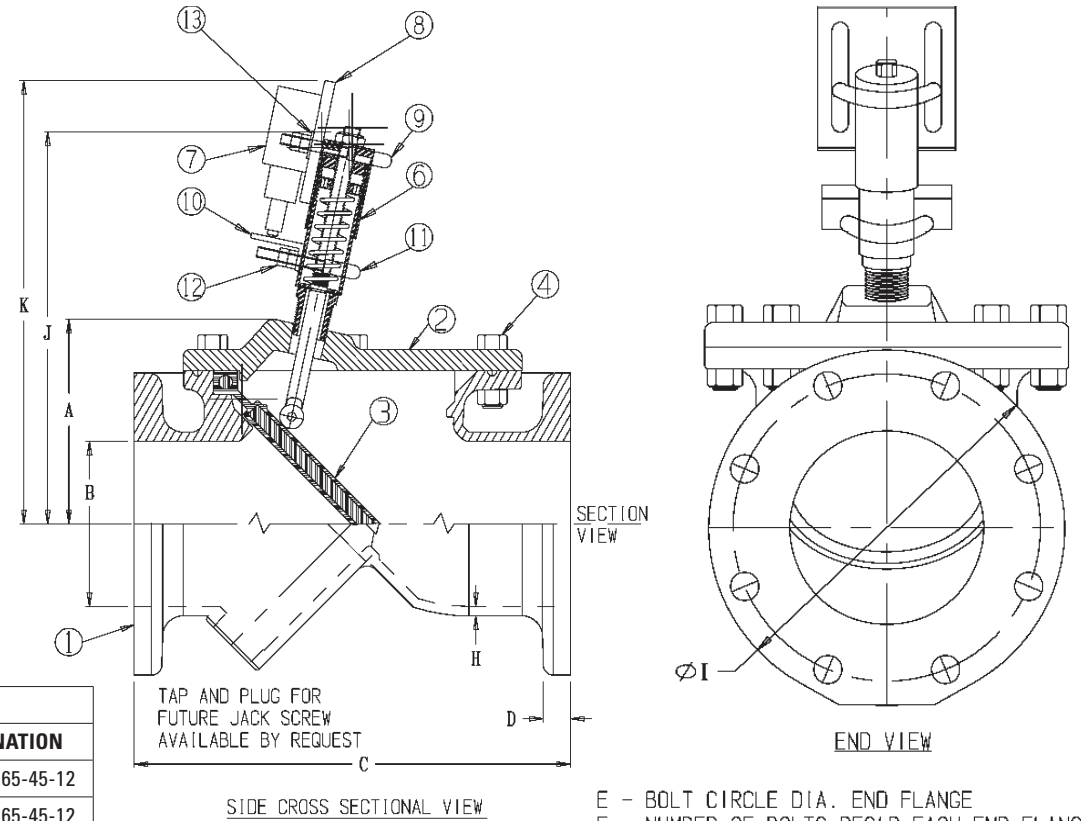
KENFLEX CHECK VALVE WITH POSITION INDICATOR AND SWITCH

DRAWING NO. - 17057 REV - 01

DRAWN BY - BES

No.	DATE	ECN	REVISION
1	10/20	ER2830	Released to MPI

PARTS LIST			
PART No.	PART	MATERIAL	ASTM DESIGNATION
1	Body (FLG x FLG)	Ductile Iron, Coated	ASTM A536 GR 65-45-12
2	Cover Plate	Ductile Iron, Coated	ASTM A536 GR 65-45-12
3	Flapper	EPDM Flapper, Met. Insert	A536 DI/D-2000 BK 807
4	Cover Bolts & Nuts	Stainless Steel	SS 18-8 F593
5	O-Ring	Nitrile (Buna-N)	ASTM D2000
6	Position Indicator Subassembly - p/n 448100P	Stainless Steel Ext. Components	----
7	A-B Rockwell 802T-BA Push Switch	Flex Cord Required	----
8	Adapter Plate	Stainless Steel 304	ASTM 276
9	Upper U-Bolt - Rubber Cushioned	McMasterr-Carr 30555T44	ASTM A193
10	Trip Angle	Stainless Steel 304 1 x 1 x 3/16	ASTM 276
11	Lower U-Bolt - Rubber Cushioned	McMasterr-Carr 30555T43	ASTM A193
12	Nuts - Add one to each side of clamp	304 SS (Some may come w/ U Bolts)	ASTM A193
13	Washers - 3/8 Diameter	Stainless Steel 304	ASTM A193



INSTALLATION NOTES

1. Preferred KV installs switch, though with caution, customer is able to perform at their own risk.
2. Requires electrical service to switch (which oscilates flexible wiring / conduit / strain relief to meet all local code.
3. For further detail, drawing 55014 may be referred to.

DIMENSIONS											
SIZE	A (APPROX.)	ØB	C	D (NDM)	ØE	F	ØG	H (NDM)	I	J (APPROX.)	K (APPROX.)
3	5.37	4.00	13	1.00	6.00	4	*1*	0.31	9.0	12.21	14.21
4	5.37	4.00	13	1.00	7.50	8	0.75	0.31	9.0	12.21	14.21
6	7.45	6.00	16	1.06	9.50	8	0.88	0.34	11.0	14.28	16.28
8	8.77	8.00	19.5	1.19	11.75	8	0.88	0.34	13.5	15.61	17.61
10	10.20	10.00	24.5	1.25	14.25	12	1.00	0.38	16.0	17.04	19.04
12	11.61	12.00	27.5	1.28	17.00	12	1.00	0.41	19.0	18.45	20.45

1 HOLES ARE TAPPED 0.625UNC-11-2B, STRADDLE C.L.